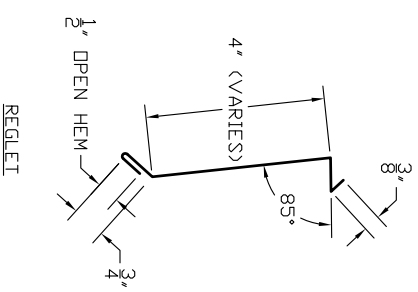
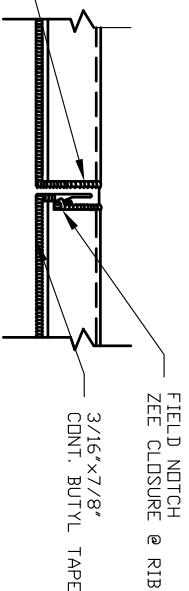


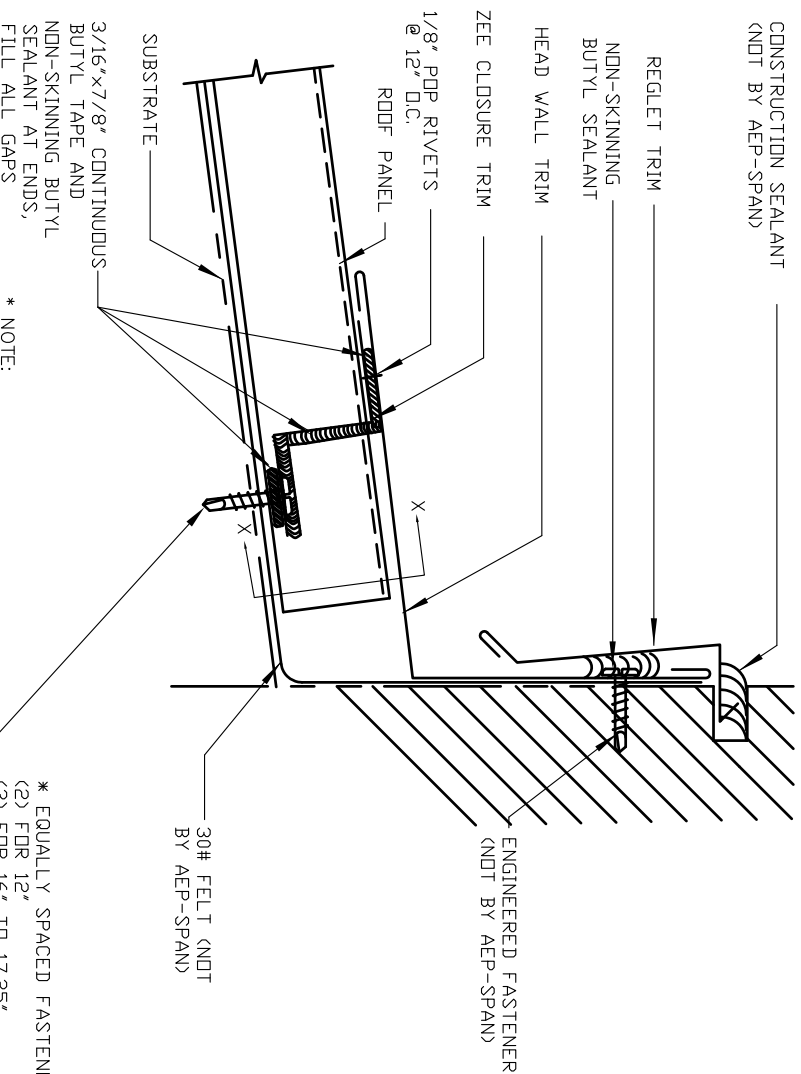
ZEE CLOSURE
 * DSHP = 1-5/8"
 * SSNB = 7/8"
 * SSWB = 1-7/8"



NON-SKINNING BUTYL SEALANT APPLIED TO ENDS OF ZEE CLOSURE



SECTION "X-X"



* NOTE:
 ADDITIONAL FASTENERS MAY BE REQUIRED IN SNOW LOAD AREAS. SEE APPENDICES

* EQUALLY SPACED FASTENERS
 (2) FOR 12"
 (3) FOR 16" TO 17.25"
 (4) FOR 18" TO 22.5"
 WIDE PANELS



DESIGN SPAN HP & SELECT SEAM

HEAD WALL

DS-11