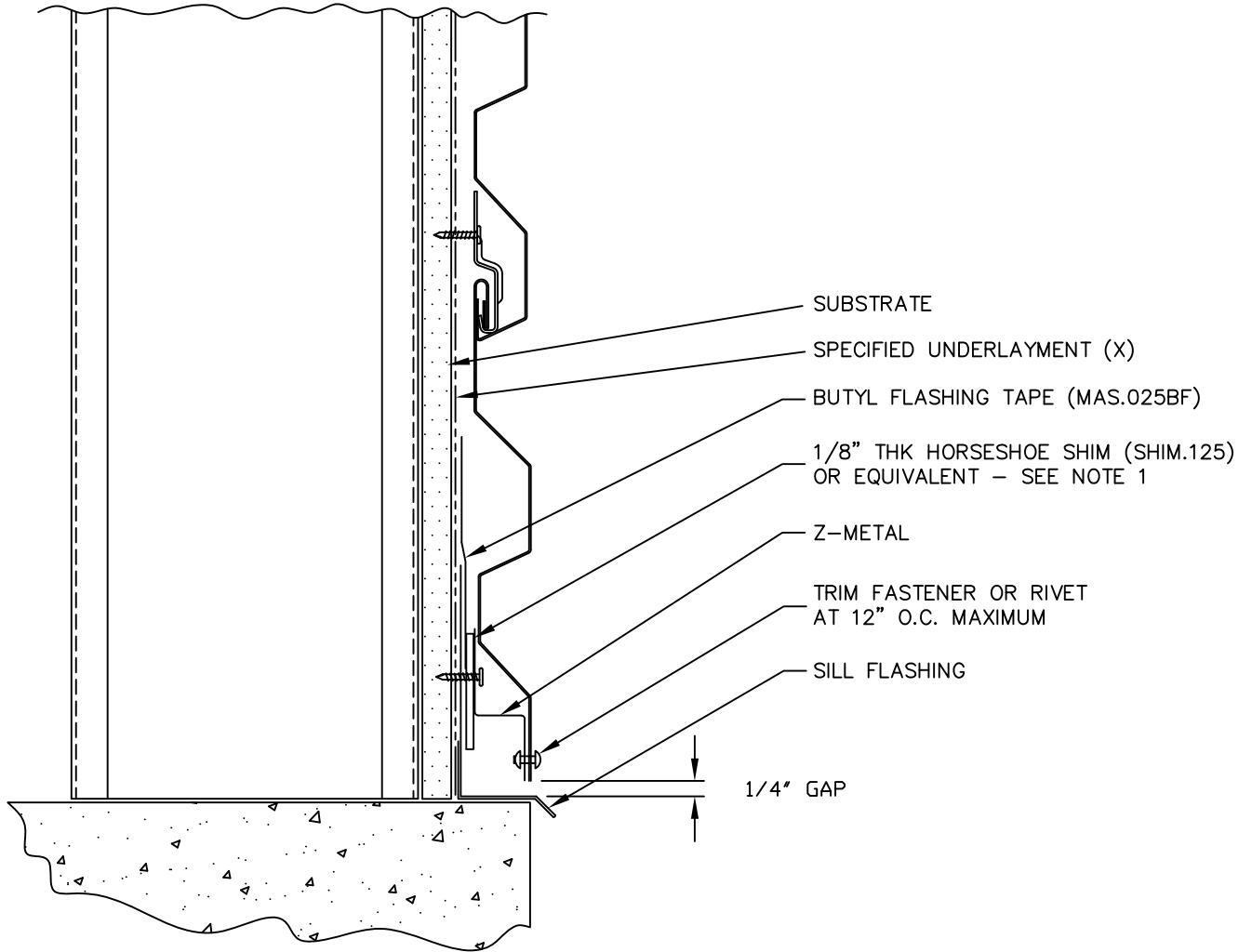


	TRIM	DIM. A	USAGE
1 1/2" A	ZC225	7/8"	FLUSH MOUNT
	ZC228	1 3/8"	W/0.5" STANDOFF

	TRIM	DIM. A	USAGE
4" A	DF026	1 1/4"	FLUSH MOUNT
	DF027	1 3/4"	W/0.5" STANDOFF

1" 1/2" 135°

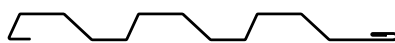


1. SHIM USED FOR MOISTURE CONTROL (DRAINAGE) IN FLUSH MOUNT APPLICATIONS.
(X) - NOT BY AEP SPAN

TW-12 PANELS ARE INSTALLED GROUND TO EAVE.



TW-12
HORIZONTAL INSTALL.



BASE

TWH-05