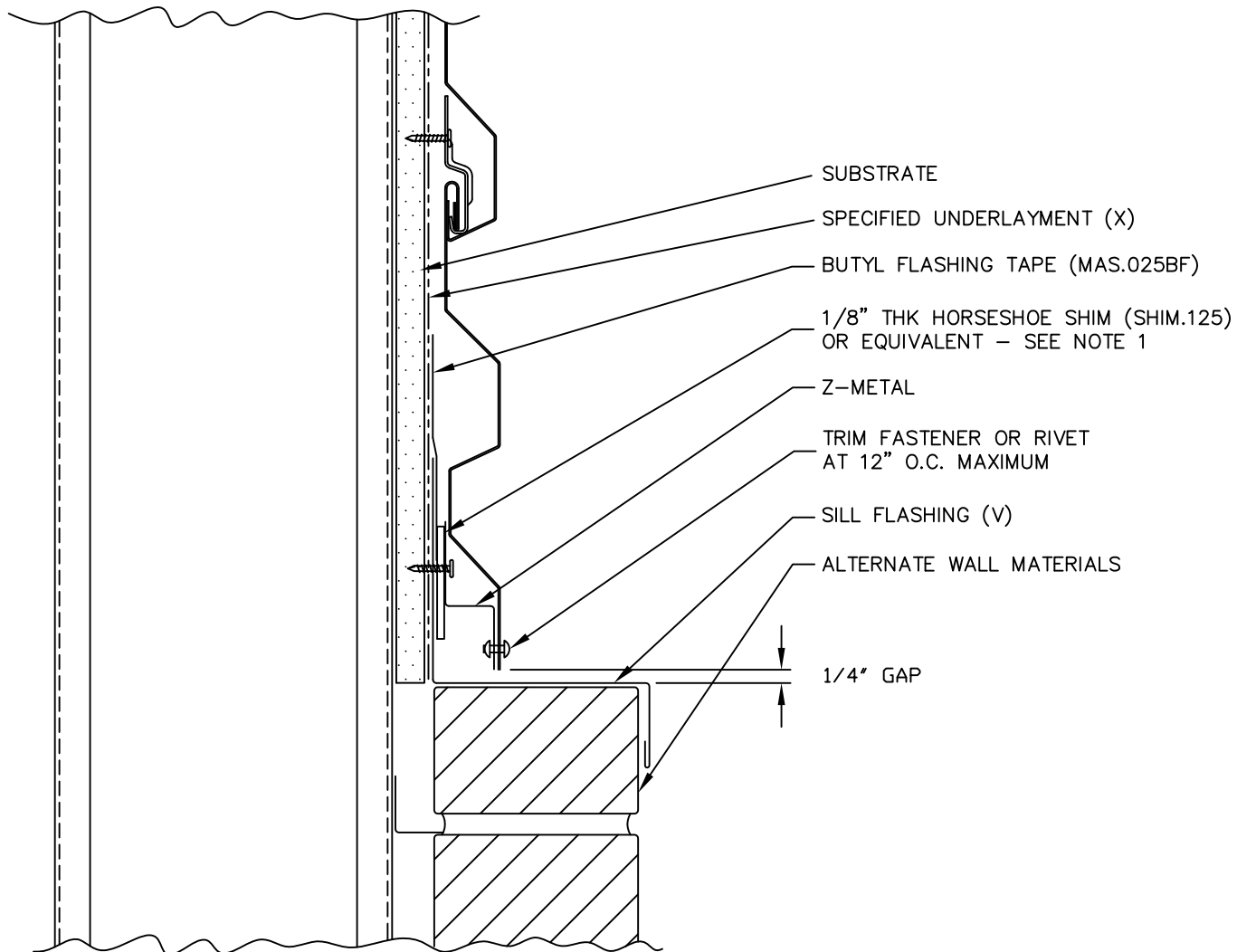


TRIM	DIM. A	USAGE
ZC225	7/8"	FLUSH MOUNT
ZC228	1 3/8"	W/0.5" STANDOFF



1. SHIM USED FOR MOISTURE CONTROL (DRAINAGE) IN FLUSH MOUNT APPLICATIONS.
 (X) - NOT BY AEP SPAN
 (V) - DIMENSIONS VARY BASED ON PROJECT CONDITIONS



TW-12
 HORIZONTAL INSTALL.



SILL

TWH-06