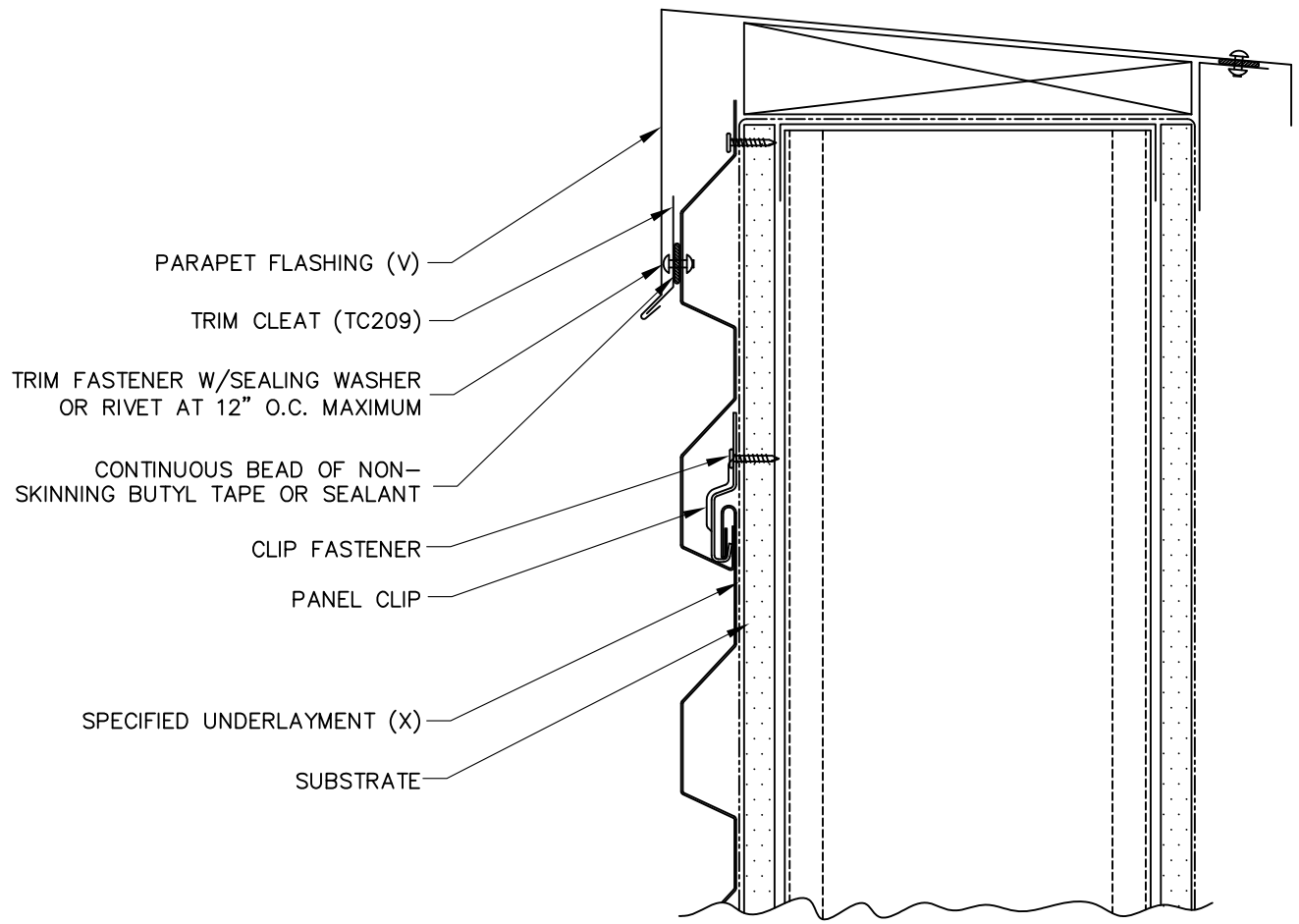


TC209



PARAPET FLASHING (V)

TRIM CLEAT (TC209)

TRIM FASTENER W/SEALING WASHER
OR RIVET AT 12" O.C. MAXIMUM

CONTINUOUS BEAD OF NON-
SKINNING BUTYL TAPE OR SEALANT

CLIP FASTENER

PANEL CLIP

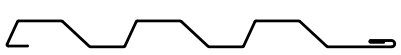
SPECIFIED UNDERLAYMENT (X)

SUBSTRATE

(X) - NOT BY AEP SPAN
(V) - DIMENSIONS VARY BASED ON PROJECT CONDITIONS



TW-12
HORIZONTAL INSTALL.



PARAPET

TWH-13