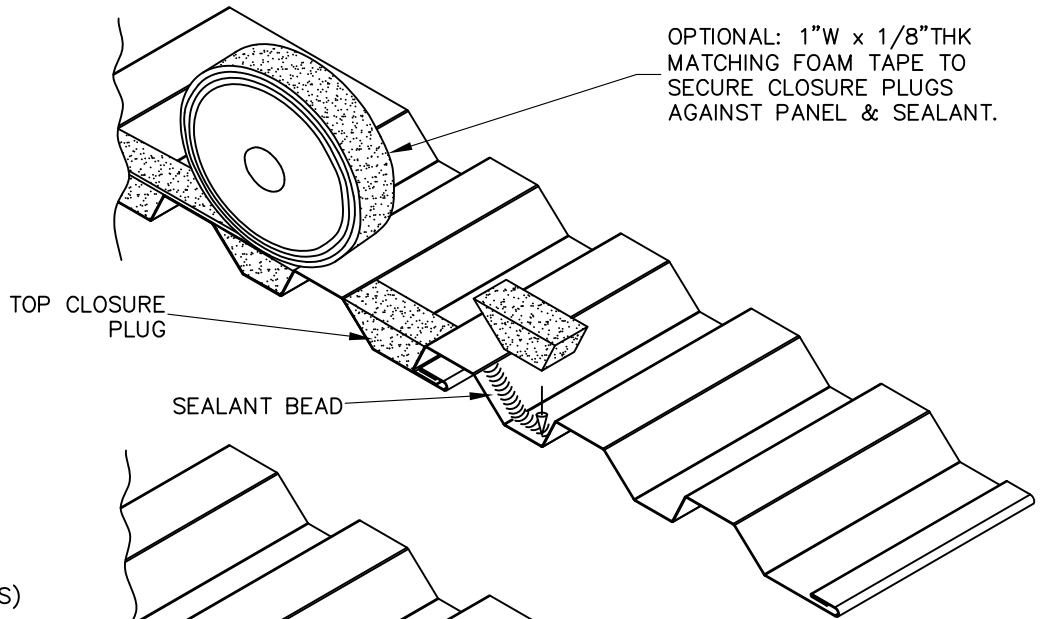


TOP SIDE CLOSURE
INSTALLATION

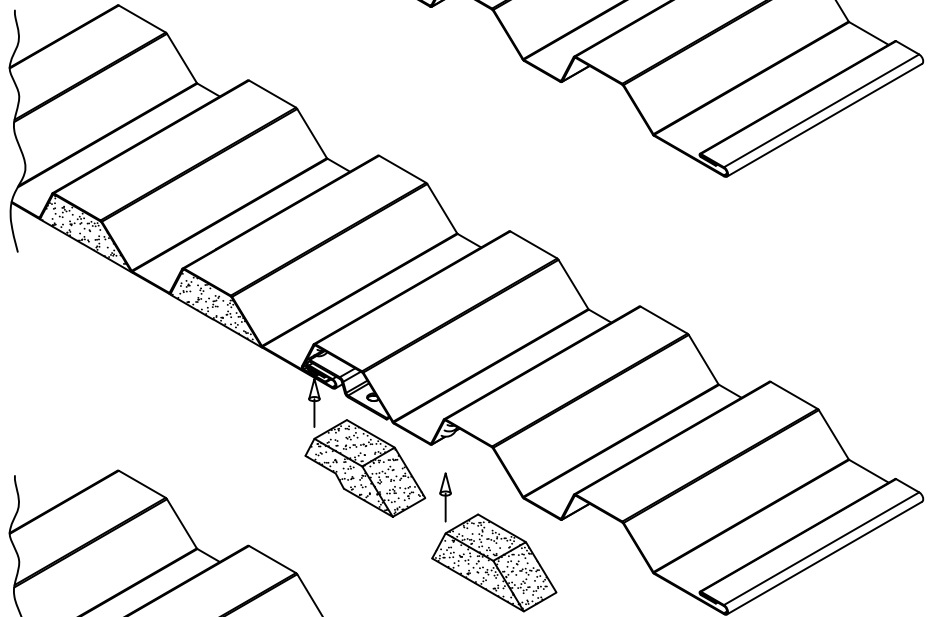


OPTIONAL: 1" W x 1/8" THK
MATCHING FOAM TAPE TO
SECURE CLOSURE PLUGS
AGAINST PANEL & SEALANT.

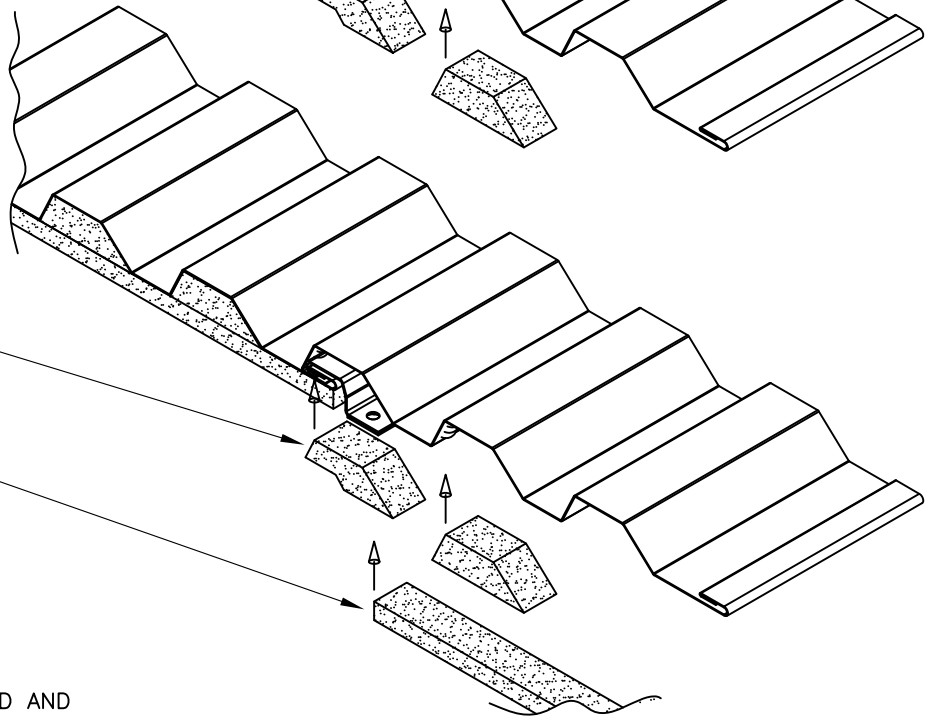
TOP CLOSURE
PLUG

SEALANT BEAD

BOTTOM SIDE CLOSURE
INSTALLATION
(FLUSH MOUNTED PANELS)



BOTTOM SIDE CLOSURE
INSTALLATION
(PANELS WITH STANDOFF CLIP)



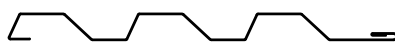
BOTTOM
CLOSURE PLUG

1X1 UNIVERSAL
CLOSURE STRIP
(AEP #CLEM1X19.68
OR EQUIV.)

NOTES:
- ALL CLOSURE PLUGS SECURED AND
SEALED WITH POLYURETHANE SEALANT



TW-12
VERTICAL INSTALL.



CLOSURE
INSTALLATION

TWV-04