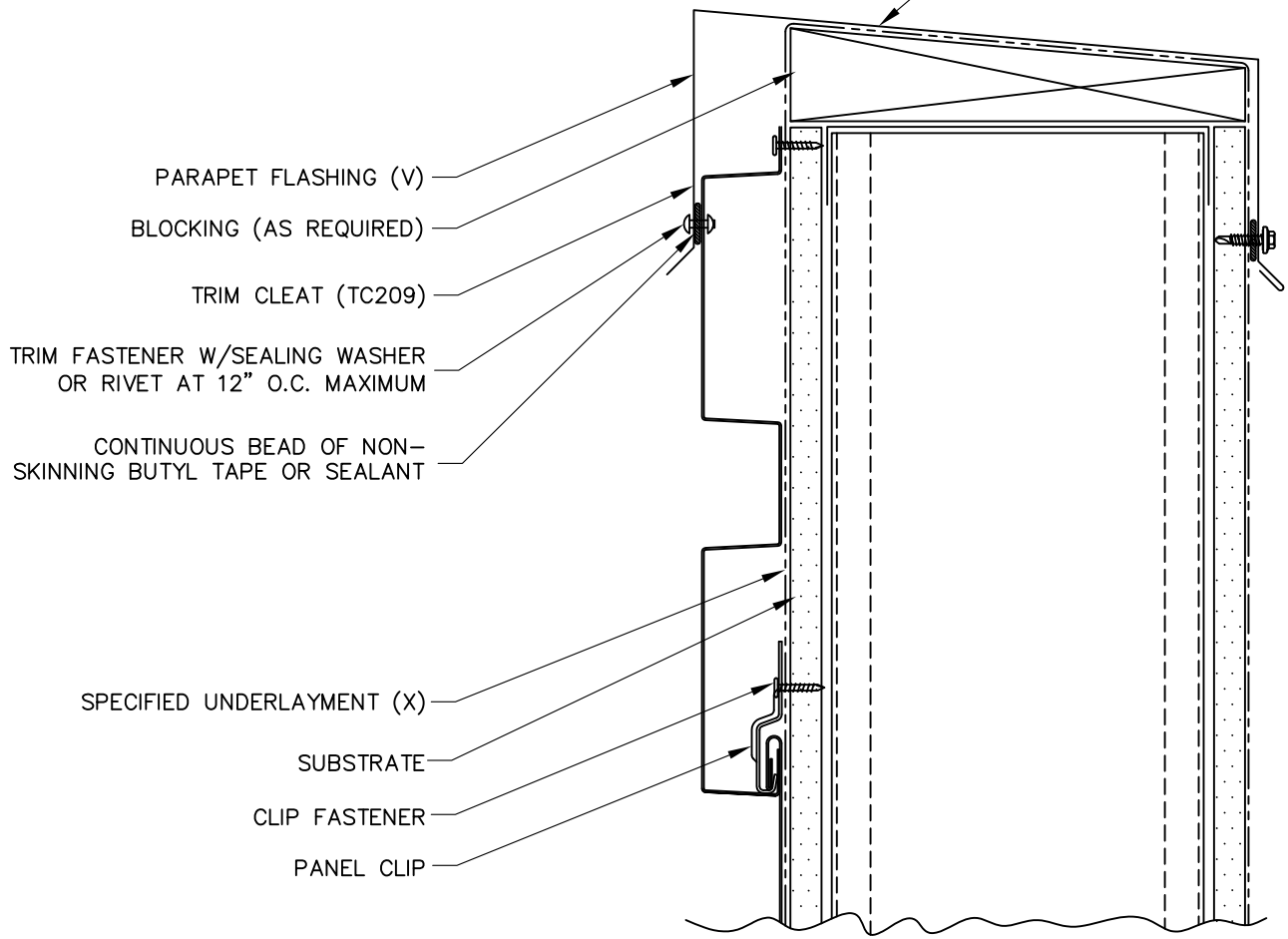


1 1/2"
 135°
 5/8"

TC209

1/4:12 MIN. SLOPE



PARAPET FLASHING (V)

BLOCKING (AS REQUIRED)

TRIM CLEAT (TC209)

TRIM FASTENER W/SEALING WASHER
 OR RIVET AT 12" O.C. MAXIMUM

CONTINUOUS BEAD OF NON-
 SKINNING BUTYL TAPE OR SEALANT

SPECIFIED UNDERLAYMENT (X)

SUBSTRATE

CLIP FASTENER

PANEL CLIP

(X) - NOT BY AEP SPAN
 (V) - DIMENSIONS VARY BASED ON PROJECT CONDITIONS



FLEX SERIES
 HORIZONTAL INSTALL.



PARAPET

FXH-13