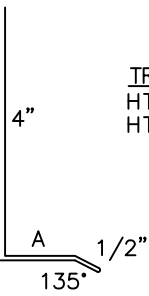
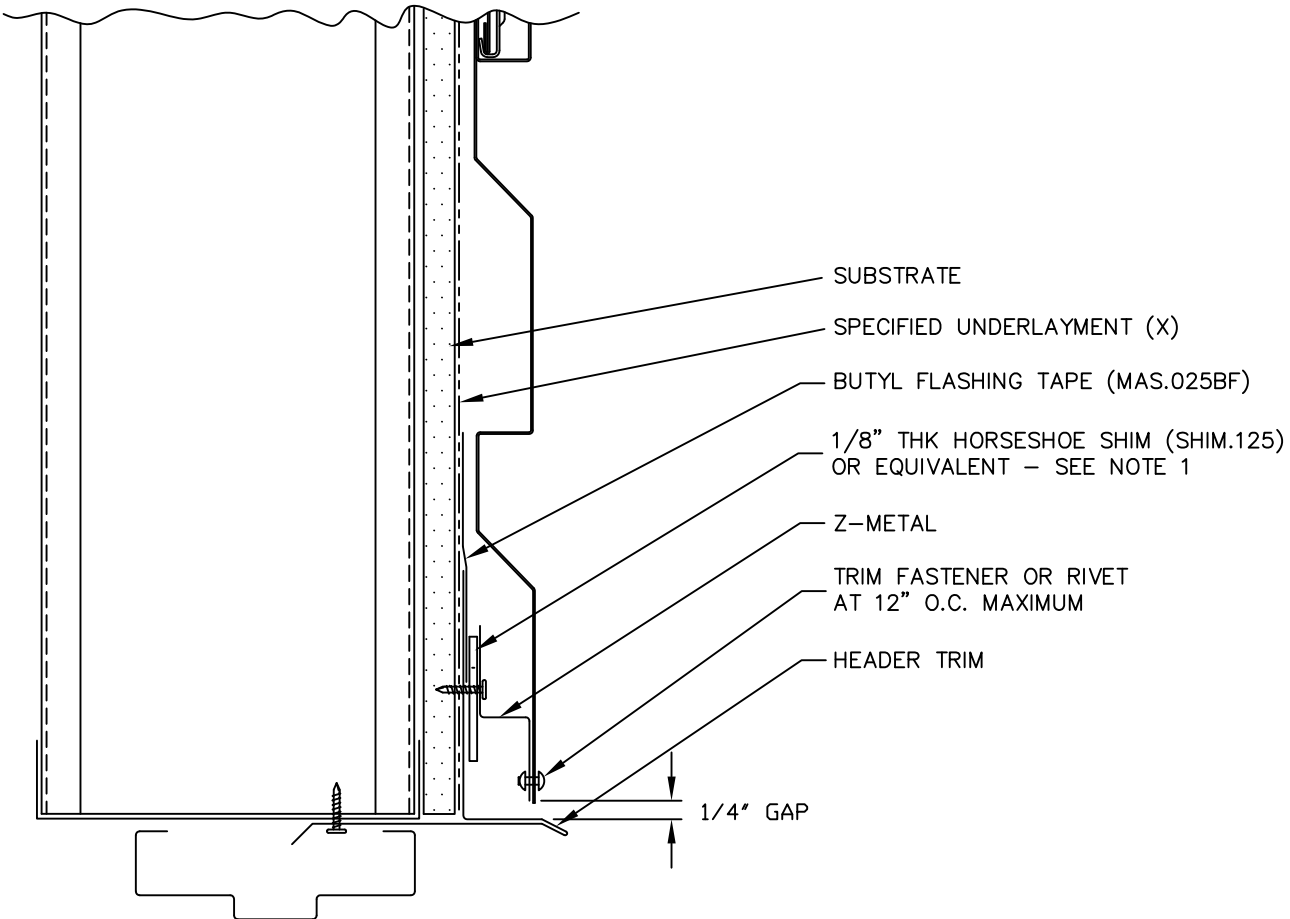
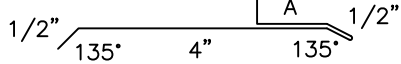


TRIM	DIM_A	USAGE
ZC225	7/8"	FLUSH MOUNT
ZC228	1 3/8"	W/0.5" STANDOFF



TRIM	DIM_A	USAGE
HT093	1 1/8"	FLUSH MOUNT
HT102	1 5/8"	W/0.5" STANDOFF



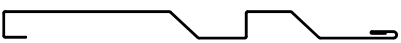
- SUBSTRATE
- SPECIFIED UNDERLAYMENT (X)
- BUTYL FLASHING TAPE (MAS.025BF)
- 1/8" THK HORSESHOE SHIM (SHIM.125) OR EQUIVALENT - SEE NOTE 1
- Z-METAL
- TRIM FASTENER OR RIVET AT 12" O.C. MAXIMUM
- HEADER TRIM

1/4" GAP

1. SHIM USED FOR MOISTURE CONTROL (DRAINAGE) IN FLUSH MOUNT APPLICATIONS.  
(X) - NOT BY AEP SPAN



**PERCEPTION  
COLLECTION**  
HORIZONTAL INSTALL.



DOOR / WINDOW  
(HEAD)

PCH-14