



ARCHITECTURAL METAL ROOFING & SIDING

PRODUCT GUIDE





CONCEALED FASTENER PANELS

- 2 Design Span® *hp*
- 3 Span-Lok™ *hp*
- 4 Select Seam®
- 5 Flex Series
- 6 Prestige Series®
- 7 Perception Collection®
- 8 Flush Panel

EXPOSED FASTENER PANELS

- 9 HR-36®
- 10 Box Rib™
- 11 Nu-Wave® Corrugated
- 12 Mini-V-Beam™
- 13 PBR Panel
- 14 U-Panel

ADDITIONAL INFORMATION

- 15 Purlins and EZ-Form®
- 16 Sustainability
- 16 Graffiti-Resistant Coating System
- 17 Product Index and Application Guide
- 18 AEP Span Color Offering



Product: Design Span® *hp*
Color: Cool Zinc Gray



Product: Design Span® *hp*
Color: Bare, ZINCALUME®, & Metallic Silver



Product: Design Span® *hp*
Color: Slate Gray

Design Span® *hp* is a performance-rated structural standing seam metal roof system which does not require field seaming. Recommended as a roof over metal or wood decking, and as a fascia or mansard over plywood or supports.



FEATURES AND BENEFITS:

- 12", 16", 17" & 18" net coverage metal roof panel.
- Minimum recommended slope 2:12.
- 22ga and 24ga in standard finishes.
- See page 18 for full range of color options and paint systems.
- Custom manufactured panel lengths: 5'-3" to 45'-0".
- Wide batten cap available for a bold appearance.
- Panel is acceptable for use in metal wall applications.
- Factory applied sealant is a standard offer.
- Subtle striations available on 16", 17" & 18" panels.
- Factory notching available for turn under at the eave.
- Snap-together panel; no field seaming required.
- See page 17 for testing and certifications.
- Manufactured in Tacoma, WA.



Product: Design Span® *hp*
Color: Old Town Gray



Product: Span-Lok™ hp
Color: Colonial Red



Product: Curved Span-Lok™
Color: Zinc Gray



Product: Span-Lok™ hp
Color: ZINCALUME® Plus
© The Kubala Washatko Architects Inc. Mark F. Heifren Photography

Performance-rated architectural standing seam metal roof systems with a mechanically seamed 2" high rib, providing aesthetic appeal and weathertightness and can be used in a wide variety of new construction or retrofit applications.



FEATURES AND BENEFITS:

- 12" & 16" coverage metal roof panel.
- Minimum recommended slope ¼:12.
- 22ga and 24ga in standard finishes and .040 aluminum.
- See page 18 for full range of color options and paint systems.
- Custom manufactured panel lengths: 6'-0" to 45'-0". (Aluminum 40'-0")
- Panel is acceptable for use in vertical metal wall applications.
- Subtle striations standard on 16" panel. Flat pan offered by request.
- Factory applied sealant is standard.
- 16" panel available with 2 pencil ribs.
- Factory notching available for 16" panel.
- For end laps, factory swaged panels are available (16" only).
- On-Site Roll forming available for 16" panel with 2 pencil ribs.
- See page 17 for testing and certifications.
- Manufactured in Tacoma, WA.



Product: Span-Lok™ hp
Color: Metallic Silver



Product: Select Seam®
 Color: Sedona Rust, Metallic Silver, & Vintage®
 Photo Credit: Vance Fox Photography



Product: Select Seam®
 Color: Metallic Champagne, Copper, & Silver
 Photo Credit: © Doug Walker Photography



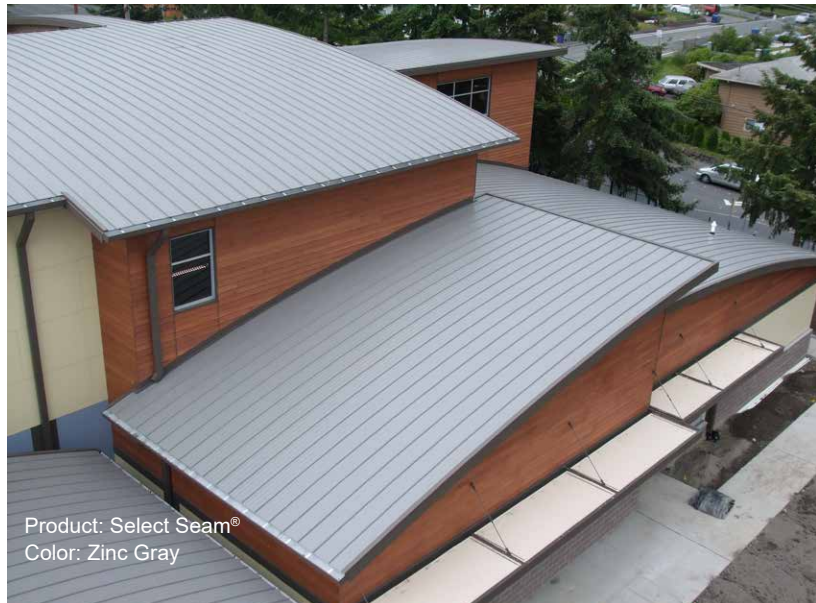
Product: Select Seam®
 Color: Sedona Rust
 Photo Credit: Vance Fox Photography

A performance-rated, non-structural, batten seam metal roof system. Its clean wide pan appearance makes it ideal for classic architectural effects. Curved Select Seam is a performance-rated, non-structural, batten seam metal roof that can be curved for radius applications.



FEATURES AND BENEFITS:

- Narrow Batten coverage 12", 16" and 21¼" metal roof panel.
- Wide Batten coverage 13¼", 17¼" and 22½" metal roof panel.
- Minimum recommended slope 3:12.
- 22ga and 24ga in standard finishes.
- See page 18 for full range of color options and paint systems.
- Custom manufactured panel lengths: 5'-0" to 45'-0".
- Panel is acceptable for use in metal wall applications.
- Subtle striations available on 12" to 22½" panels.
- Narrow Batten panels can be field curved to a 4' radius.
- See page 17 for testing and certifications.
- Manufactured in Tacoma, WA.



Product: Select Seam®
 Color: Zinc Gray



Product: Flex Series
Color: Vintage®
Photo Credit: Alan Brandt Photography



Product: Flex Series
Color: Metallic Silver

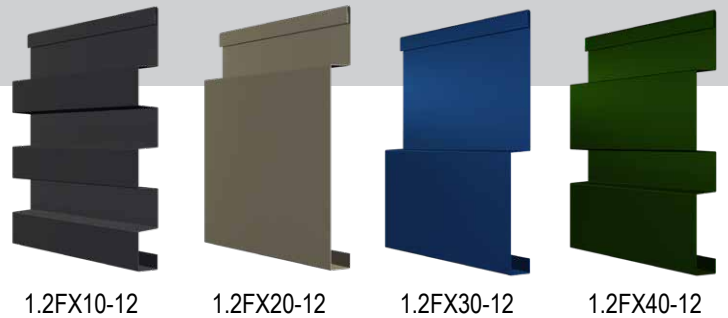


Product: Flex Series
Color: Metallic Champagne & Burnt Rust

Flex Series is a collection of architectural metal siding panels offering design flexibility and versatility. The innovative metal siding solution makes it easy to mix and match any of the four panels together to achieve a distinctive design.

FEATURES AND BENEFITS:

- 12" coverage wall panel.
- Wall Installation: Horizontal or vertical.
- 22ga in standard finishes.
- See page 18 for full range of color options and paint systems.
- Custom manufactured panel lengths: 5'-0" to 40'-0".
- Flush Mount and ½" Standoff high performance clips available.
- Available in two panel attachment configurations – a directly attached fastening flange or clip interlocking hem.
- See page 17 for testing and certifications.
- Manufactured in Tacoma, WA.



1.2FX10-12

1.2FX20-12

1.2FX30-12

1.2FX40-12



Flush Clip

Standoff Clip

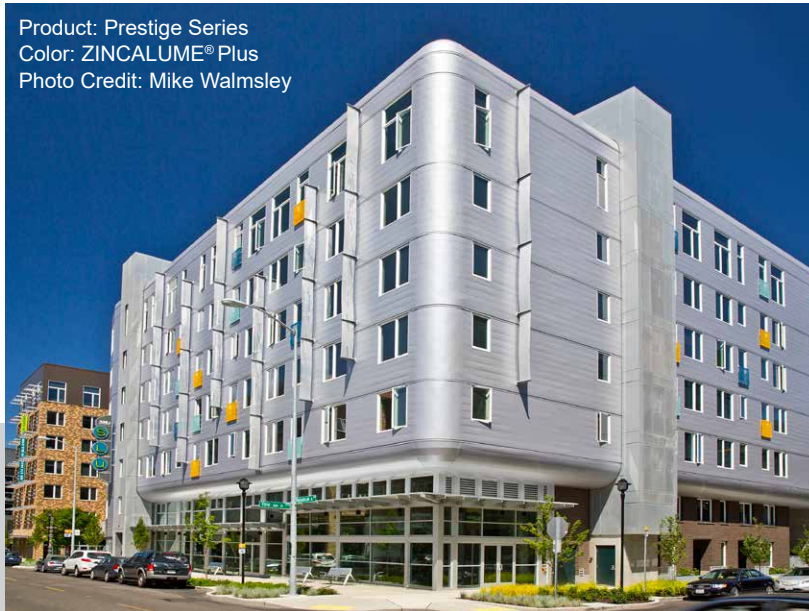
Direct Fastened



Product: Prestige Series
 Color: Cool Regal White
 Photo Credit: Vance Fox Photography



Product: Prestige Series
 Color: Midnight Bronze

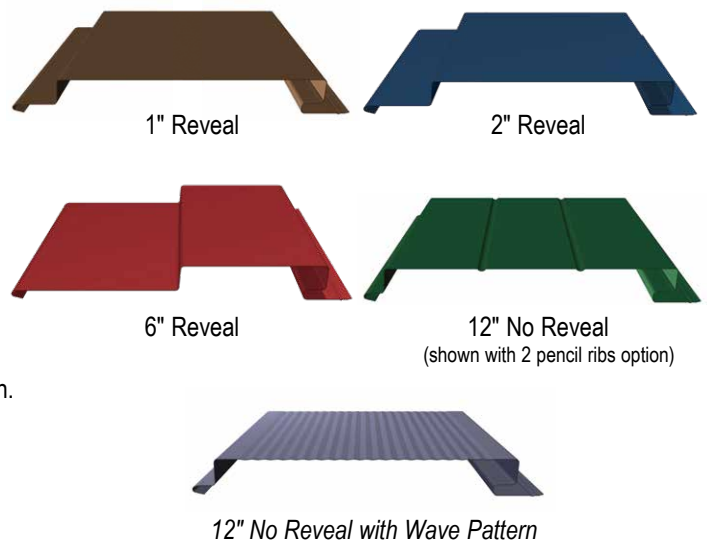


Product: Prestige Series
 Color: ZINCALUME® Plus
 Photo Credit: Mike Walmsley

Prestige Series® is a crisp, distinctive solution for exterior and interior walls, fascias and equipment screen applications. Prestige Series can also be used as a soffit or ceiling panel. The panel's concealed fastener system provides a clean, distinctive look in any application.

FEATURES AND BENEFITS:

- 12" coverage wall panel.
- Offered in 4 different reveals: 0", 1", 2", and 6".
- Wall Installation: Horizontal or vertical offered in 22ga minimum. Soffit or Fascia Installation: Offered in 24ga minimum, except 6" reveal which is offered in 22ga only.
- 22ga and 24ga in standard finishes.
- See page 18 for full range of color options and paint systems
- Custom manufactured metal siding lengths: 6'-0" to 25'-0" for 24ga and 6'-0" to 30'-0" for 22ga.
- Factory applied sealant is a standard offer.
- Available with 1 or 2 pencil ribs. 12" panel available with wave pattern.
- Perforation options available for an additional charge.
- High performance clip available to meet wind loads.
- See page 17 for testing and certifications.
- Manufactured in Tacoma, WA.





Product: Perception Collection®
 Color: Zinc Gray
 Photo Credit: © Fine Line CAD Home Design, Boswell Photography,
 Brian Wilkinson Design/Build



Product: Perception Collection®
 Color: Custom Blue

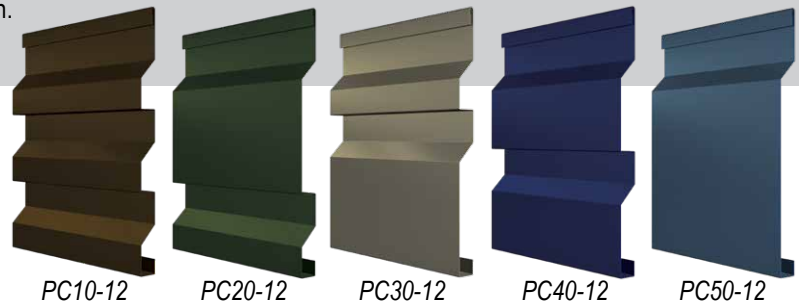


Product: Perception Collection®
 Color: Dark Bronze & Metallic Silver

Perception Collection® is a set of five concealed fastened metal siding panels, each with unique geometric angles and rib patterns which can be combined to create a distinct design. Ideal for fascia and equipment screen applications.

FEATURES AND BENEFITS:

- 12" coverage wall panel.
- Wall Installation: Horizontal or vertical.
- 22ga in standard finishes.
- See page 18 for full range of color options and paint systems.
- Custom manufactured panel lengths: 5'-0" to 40'-0".
- Flush Mount and ½" Standoff high performance clips available.
- Available in two panel attachment configurations, a directly attached fastening flange or clip interlocking hem.
- See page 17 for testing and certifications.
- Manufactured in Tacoma, WA.



PC10-12

PC20-12

PC30-12

PC40-12

PC50-12



Flush Clip

Standoff Clip

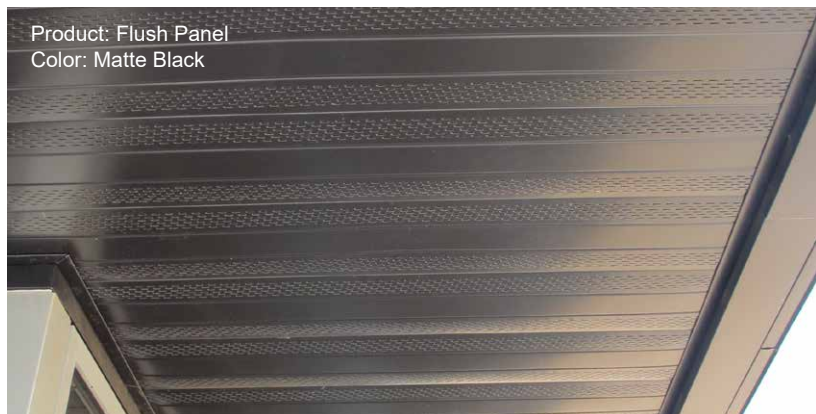
Direct Fastened



Product: Flush Panel
 Color: Terra-Cotta, Parchment, & Zinc Gray
 Photo Credit: © Studio ASAP

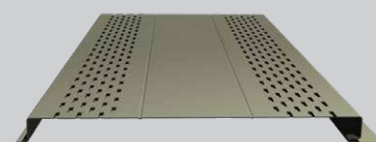


Product: Flush Panel
 Color: Metallic Silver



Product: Flush Panel
 Color: Matte Black

Flush Panel is a low profile, concealed fastener panel ideal for wall, soffit, fascia, and mechanical screen applications. Available in both flat and vented panels, Flush Panel provides a distinct design for any project.



Vented Flush Panel with 2 pencil ribs

FEATURES AND BENEFITS:

- 12" coverage wall panel.
- Wall Installation: vertical (offered in 22ga).
 Soffit or Fascia Installation: (offered in 24ga minimum).
- 22ga and 24ga in standard finishes.
- See page 18 for full range of color options and paint systems..
- Custom manufactured panel lengths:
 5'-0" to 30'-0" (22ga) and 5'-0" to 25'-0" (24ga).
- Available with 1 or 2 pencil ribs.
- Venting available. 1 or 2 pencil ribs required for vented panel.
- See page 17 for testing and certifications.
- Manufactured in Tacoma, WA.



Product: Flush Panel
 Color: Matte Black

Product: HR-36®
 Color: Parchment & Zinc Gray
 Photo Credit: Doug Walker Photography

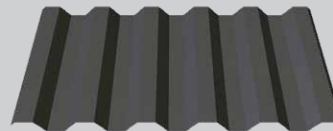


Product: HR-36®
 Color: Vintage®



Product: HR-36®
 Color: Metallic Silver

HR-36® metal roofing and siding is a through-fastened panel with 36" net coverage. This panel is predominantly used in industrial and commercial applications. As a wall application, HR-36 can be used both vertically or horizontally.



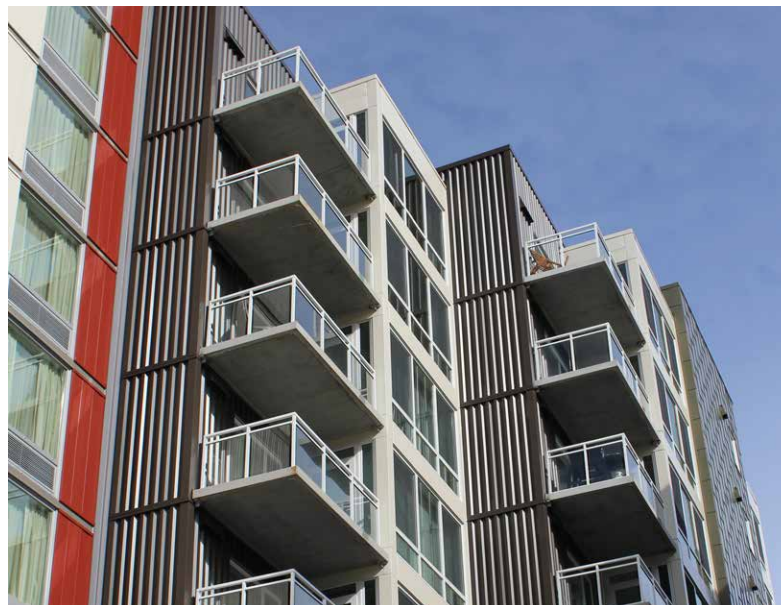
HR-36 (Roof and Wall)



Reverse HR-36 (Wall)

FEATURES AND BENEFITS:

- 36" coverage roof and wall panel.
- Minimum recommended slope 1:12.
- 26ga in Dura Tech™ nt, 24ga and 22ga in Dura Tech™ 5000/mx. 20ga available in ZINCALUME® Plus.
- See page 18 for full range of color options and paint systems
- Custom manufactured panel lengths: 6'-0" to 50'-0".
- Perforation options available for an additional charge.
- See page 17 for testing and certifications.
- Manufactured in Sacramento, CA.





Product: Box Rib™
Color: Vintage®
Photo Credit: © Shutter Release Photography

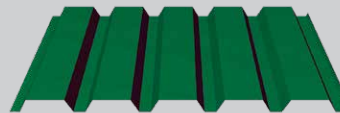


Product: Box Rib™
Color: Metallic Silver & ZACTique® II

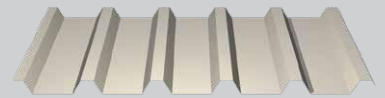


Product: Box Rib™
Color: Metallic Champagne

Box Rib™ is a through-fastened metal wall panel with 36" net coverage and is predominantly used for commercial, architectural and industrial metal wall applications. Reversed Box Rib is suitable for roof and wall applications.



Box Rib (Wall)



Reverse Box Rib (Roof and Wall)

FEATURES AND BENEFITS:

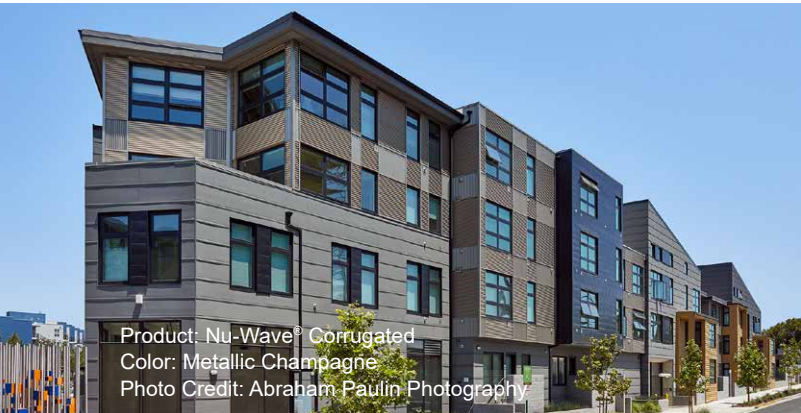
- 36" coverage wall panel.
- Wall Installation: Horizontal or vertical.
- Reversed Box Rib is suitable for roof and wall applications. (Minimum recommended slope 1:12).
- 26ga in Dura Tech™ nt, 24ga and 22ga in Dura Tech™ 5000/mx. 20ga available in ZINCALUME® Plus.
- See page 18 for full range of color options and paint systems.
- Custom manufactured panel lengths: 6'-0" to 50'-0".
- Perforation options available for an additional charge.
- See page 17 for testing and certifications.
- Manufactured in Sacramento, CA.



Product: Box Rib™
Color: Terra Cotta
Photo Credit: Nvision Architecture



Product: Nu-Wave® Corrugated
Color: Burnt Rust & Zinc Gray
Photo Credit: © Shutter Release Photography



Product: Nu-Wave® Corrugated
Color: Metallic Champagne
Photo Credit: Abraham Paulin Photography

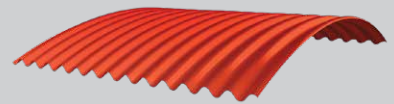


Product: Nu-Wave® Corrugated
Color: Colonial Red & Custom Green

Nu-Wave® Corrugated is a classic through-fastened metal panel with 7/8" deep corrugations. The panel measures 36" out-to-out, with a 32" net coverage for roof applications and a 34 2/3" net coverage for wall applications.



Nu-Wave Corrugated



Curved Nu-Wave Corrugated

FEATURES AND BENEFITS:

- 32" coverage roof panel. 34 2/3" coverage wall panel.
- Minimum recommended slope 3:12.
- 26ga in Dura Tech™ nt, 24ga and 22ga in Dura Tech™ 5000/mx. 20ga available in ZINCALUME® Plus.
- See page 18 for full range of color options and paint systems.
- Custom manufactured panel lengths: 6'-0" to 50'-0" (Straight) & 6'-0" to 30'-0" (Curved).
- Perforation options available for an additional charge.
- Available smooth curved to a minimum of 3' radius.
- Available in 22ga IronOx (black steel). Uncoated and unpainted; rusts naturally. No warranty is offered or implied.
- See page 17 for performance testing.
- Manufactured in Sacramento, CA.



Product: Nu-Wave® Corrugated
Color: Matte Black
Photo Credit: Abraham Paulin Photography

Product: Mini-V-Beam™
Color: Regal Blue & ZINCALUME®



Product: Mini-V-Beam™
Color: Custom Colors

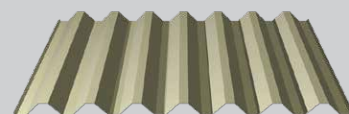


Product: Mini-V-Beam™
Color: Metallic Champagne & ZACTique® II

Mini-V-Beam™ is a through-fastened metal panel with 32" net coverage. This ribbed metal panel is used in a roof and wall applications. The lighter gauge products are also used in agricultural applications.



Mini-V-Beam (Roof and Wall)



Reverse Mini-V-Beam (Wall)

FEATURES AND BENEFITS:

- 32" coverage roof and wall panel.
- Minimum recommended slope 1:12.
- 26ga in Dura Tech™ nt, 24ga and 22ga in Dura Tech™ 5000/mx. 20ga available in ZINCALUME® Plus.
- See page 18 for full range of color options and paint systems.
- Custom manufactured panel lengths: 5'-0" to 45'-0".
- Perforation options available for an additional charge.
- See page 17 for testing and certifications.
- Manufactured in Sacramento, CA.



Product: Mini-V-Beam™
Color: Leaf Green & ZACTique® II

Product: PBR Panel
Color: Matte Black

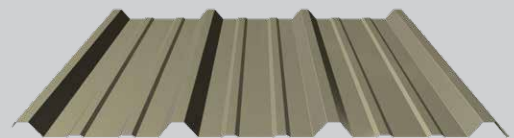


Product: PBR Panel
Color: Old Town Gray



Product: PBR Panel
Color: Desert Beige

PBR Panel is an economical, through-fastened metal roof or wall panel suitable for pre-engineered metal, post-frame, and agricultural buildings. Our Galvanized G90 PBR Panel is also ideal for use in buildings for livestock and animal confinement.



FEATURES AND BENEFITS:

- 36" coverage roof and wall panel.
- Minimum recommended slope 1:12.
- 26ga in Dura Tech™ nt, 24ga and 22ga in Dura Tech™ 5000/mx.
- See page 18 for full range of color options and paint systems.
- Custom manufactured panel lengths: 6'-0" to 50'-0".
- Matching polycarbonate panels available.
- Purlin-bearing leg speeds installation and improves the quality of panel side laps providing a consistent weather resistant joint.
- See page 17 for testing and certifications.
- Manufactured in Sacramento, CA.

Product: PBR Panel
Color: Old Town Gray



Product: U-Panel
Color: ZINCALUME® Plus

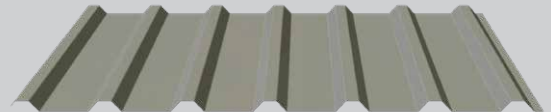


Product: U-Panel
Color: Dark Bronze



Product: U-Panel
Color: Zinc Gray

U-Panel is a "Utility" panel known for its economical through-fastened design preferred for light commercial and industrial roof or wall applications. U-Panel is especially suitable as an interior partition or liner panel for mini-storages.



FEATURES AND BENEFITS:

- 36" coverage roof and wall panel.
- Minimum recommended slope 3:12.
- 26ga in Dura Tech™ nt, 24ga and 22ga in Dura Tech™ 5000/mx.
- See page 18 for full range of color options and paint systems.
- Custom manufactured panel lengths: 6'-0" to 50'-0".
- Perforation options available for an additional charge.
- Purlin-bearing leg speeds installation and improves the quality of panel side laps providing a consistent weather resistant joint.
- See page 17 for testing and certifications.
- Manufactured in Sacramento, CA.



Product: U-Panel
Color: ZINCALUME® Plus



AEP Span is your source for steel components in the solar mounting, residential framing and pre-engineered metal building markets. We offer a broad range of light gauge steel components to meet your project needs.

FEATURES AND BENEFITS:

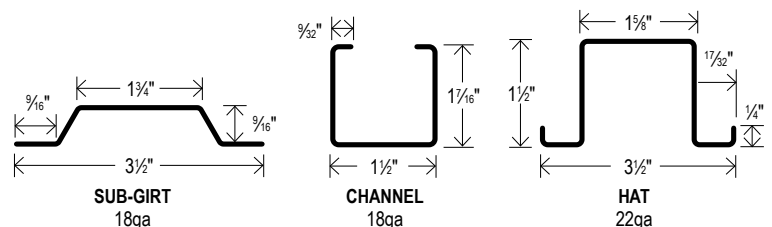
- Broad range of manufacturing capabilities that encompass several variations in part sizes and punching locations.
- Optimum versatility in custom requested punch patterns and punch placements on web and flange areas.
- Large selection of standard punch shapes and sizes.

EZ-Form® Structural Sections

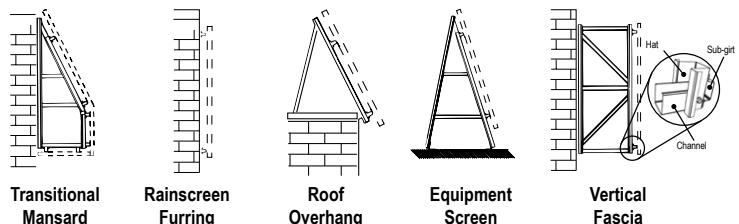
EZ-Form structural sections are light gauge framing solution for maximum design flexibility and ease of installation.

FEATURES AND BENEFITS:

- Precision roll formed in 20'-0" lengths.
- Nestable hats and channels can be joined without a separate clip angle, increasing speed and reducing cost of on-site fabrication.
- Cost effective alternative to structural steel or wood framing.
- Hot-dipped galvanized conforming to ASTM A-653, G-60 minimum.



COMMON APPLICATIONS





AEP Span is committed to environmental stewardship and leading the way to healthier built living spaces for all. Having completed a cradle-to-gate life cycle assessment, AEP Span's green journey continues with a commitment to supply chain optimization, manufacturing excellence through improved process efficiencies, as well as recycling programs across all plants and administrative facilities. Having completed a comprehensive assessment of how its products can contribute to green building certification programs, AEP Span is ready to help architects and building owners design and build green with confidence. **Visit aepspan.com to learn more.**

DURAPREP® is a registered trademark of PPG Architectural Finishes, Inc.

Graffiti-Resistant Coating System

Architectural metal siding not only shields a building from nature's elements, it can protect your project from graffiti. AEP Span's factory applied Graffiti-Resistant Coating System is formulated to work with PPG Industries' DuraPrep® Prep 400 graffiti remover. The graffiti-resistant coating system works as a barrier of protection over pre-painted architectural metal panels, preventing most graffiti material from gripping or shadowing the metal surface. If your project is tagged, just spray the DuraPrep® Prep 400 on the metal surface and the graffiti wipes off.

FEATURES AND BENEFITS:

- Lower building maintenance costs.
- Extends the beauty and value of your property.
- Available in a standard low-medium gloss or premium custom high-gloss in a variety of colors.
- Offered on all AEP Span profiles, inquire for lead times.
- 30 year Limited Warranty.
- DuraPrep® Prep 400 sold separately through PPG industries.



PG	APPLICATION	PAINT	FEATURES ¹													PERFORMANCE						Manufacturing Location											
			Roof	Wall	Soffit	Liner Panel	Dura Tech™ 5000 mx (PVDF)	Dura Tech™ nt (SMP)	Coverage (in)	Standard Gauges	Height (in)	Minimum Slope X:12	Spanning Capability	Weathertightness ²	Weathertightness Warranty	Machine Curved ³	Tapered	Attachment	Uplift (ASTM E1592)	Air/Water Infiltration (ASTM)	UL790 Fire - Roof		UL263 Fire - Wall	UL580 Uplift	UL 2218 Impact (Hail)	FM Listed	Code Compliance Report ⁴						
CONCEALED FASTENER PANELS																																	
2	Design Span <i>hp</i>	•	•	•	•	•	12, 16, 17, 18	22, 24	1 ¼	2	G	VG	■	•	•	CL	•	•	•	•	•	•	•	•	•	•	•	•	•	Tacoma, Washington			
	Design Span <i>hp</i> Wide Batten	•	•	•	•	•	12, 16, 17, 18	22, 24	1 ¼	2	G	VG	□	•	•	CL	•	•	•	•	•	•	•	•	•	•	•	•	•	•			
3	Span-Lok <i>hp</i>	•	•	•	•	•	12, 16	22, 24	2	¼	VG	E	■	•	•	CL	•	•	•	•	•	•	•	•	•	•	•	•	•	•			
	Curved Span-Lok	•	•	•	•	•	16	22	2	¼	VG	E	■	•	•	CL	•	•	•	•	•	•	•	•	•	•	•	•	•	•			
	SpanSeam	•	•	•	•	•	16	22, 24	2	¼	VG	E	■	•	•	CL	•	•	•	•	•	•	•	•	•	•	•	•	•	•			
4	Select Seam Narrow Batten	•	•	•	•	•	12, 16, 21 ¼	22, 24	1	3	N/A	G	■	•	•	CL	•	•	•	•	•	•	•	•	•	•	•	•	•	•			
	Select Seam Wide Batten	•	•	•	•	•	13 ¼, 17 ¼, 22 ½	22, 24	1 ½	3	N/A	N/A	□	•	•	CL	•	•	•	•	•	•	•	•	•	•	•	•	•	•	•		
5	Flex Series	•	•	•	•	•	12	20, 22	1 ¼	N/A	G	G	•	•	•	CL, D	•	•	N/A	•	N/A	N/A	•	•	•	•	•	•	•	•	•		
6	Prestige Series	•	•	•	•	•	12	20-24	1 ½	N/A	G	G	•	•	•	CL, D	•	•	N/A	•	N/A	N/A	•	•	•	•	•	•	•	•	•		
7	Perception Collection	•	•	•	•	•	12	20, 22	¾	N/A	G	G	•	•	•	CL, D	•	•	N/A	•	N/A	N/A	•	•	•	•	•	•	•	•	•		
8	Flush Panel	•	•	•	•	•	12	22, 24	¾	N/A	G	G	•	•	•	D	•	•	N/A	•	N/A	N/A	•	•	•	•	•	•	•	•	•		
EXPOSED FASTENER PANELS																																	
9	HR-36	•	•	•	•	•	36	20-26	1 ½	1	VG	VG	□	•	•	D	C	•	•	•	•	•	•	•	•	•	•	•	•	•	•		
	Reversed HR-36	•	•	•	•	•	36	20-26	1 ½	N/A	VG	VG	•	•	•	D	C	•	N/A	•	N/A	N/A	•	•	•	•	•	•	•	•	•	•	
10	Box Rib	•	•	•	•	•	36	20-26	1 ½	N/A	VG	VG	•	•	•	D	C	•	N/A	•	N/A	N/A	•	•	•	•	•	•	•	•	•	•	
	Reversed Box Rib	•	•	•	•	•	36	20-26	1 ½	1	VG	VG	□	•	•	D	C	•	•	•	•	•	•	•	•	•	•	•	•	•	•	•	
11	Nu-Wave Corrugated	•	•	•	•	•	32 (Roof) 34 ½ (Wall)	20-26	¾	3	G	G	□	•	•	D	C	•	•	•	•	•	•	•	•	•	•	•	•	•	•	•	
12	Mini-V-Beam	•	•	•	•	•	32	20-26	1 ½	1	E	VG	□	•	•	D	C	•	•	•	•	•	•	•	•	•	•	•	•	•	•	•	
	Reversed Mini-V-Beam	•	•	•	•	•	32	20-26	1 ½	1	E	VG	□	•	•	D	C	•	•	•	•	•	•	•	•	•	•	•	•	•	•	•	•
13	PBR Panel	•	•	•	•	•	36	22-26	1 ¼	1	G	G	□	•	•	D	C	•	•	•	•	•	•	•	•	•	•	•	•	•	•	•	•
14	U-Panel	•	•	•	•	•	36	22-26	1 ¼	3	G	G	□	•	•	D	C	•	•	•	•	•	•	•	•	•	•	•	•	•	•	•	•

TABLE NOTES:

- Primary Application
- Weathertightness warranty available when used with AEP Span Underlayment *HT*. Minimum slope required. (Roof application only)
- AEP Span Underlayment *HT* available. (Roof application only)

Good (G)
Very Good (VG)
Excellent (E)

Clip Attached (CL)
Direct Fastened (D)
Performance calculated per code provisions (C)



- (1) Not all product capabilities/ limitations are listed. Chart to be used for general product selection guidance only.
- (2) Relative weathertightness rating based on seam height and panel lap design.
- (3) In general, most panels may be sprung curved to large radii (inquire for limitations).
- (4) All panels are prescriptive within IBC. Compliance reports provided as convenience.

OIL CANNING: All flat metal surfaces can display waviness commonly referred to as "oil canning". "Oil canning" is an inherent characteristic of steel products, not a defect, and therefore is not a cause for panel rejection.

SPECIALTY PRINTS, ALUMINUM, CUSTOM COLORS, AND OTHER GAUGES AVAILABLE AS SPECIAL ORDERS:

Inquire with your outside sales representative about lead times and minimum order requirements.

AEP Span Underlayment *HT* is a high-tensile strength, rubberized, asphalt underlayment specifically designed to withstand temperatures up to 250°F (121°C). Ideal for use under steel and aluminum metal roofing where a premium underlayment is desired. This strong, skid-resistant membrane provides superior protection from water penetration caused by wind-driven rain and ice dams. Contact your AEP Span representative for more information.

AEP Span Underlayment *HT* is REQUIRED for all Full System Limited Weathertightness Warranties issued by AEP Span.

TABLE NOTES:

- 24 and 22 GA
- 24 GA only
- 22 GA only
- 26 GA only

		SRI	LRV	Design Span®	Span-Lok™ hp	Select Seam®	Flex Series	Prestige Series®	Perception Collection®	Flush Panel	HR-36®	Box Rib™	Nu-Wave® Corrugated	PBR Panel	U-Panel	Mini-V-Beam™	Flat Sheet 46"	Flat Sheet 48 3/4"
DURA TECH™ 5000 (PVDF)																		
	Cool Regal White*	88	75	●	●	●	□	●	□	●	●	●	●	●	●	●	●	●
	Cool Parchment	58	40	●	●	●	□	●	□	●	●	●	●	○	○	○	●	●
	Cool Sierra Tan	55	34	●	●	●	□	●	□	●	●	●	●	○	○	○	●	●
	Cool Pebble	48	27	●	●	●	□	●	□	●	○	○	○				○	●
	Cool Walnut	38	18	●	●	●	□	●	□	●	○	○	○				○	●
	Cool Weathered Copper	34	11	●	●	●	□	●	□	●	●	●	●	○	○	○	●	●
	Cool Dark Bronze	32	8	●	●	●	□	●	□	●	●	●	●	○	○	○	●	●
	Cool Terra-Cotta	41	15	●	●	●	□	●	□	●	●	●	●	○	○	○	●	●
	Cool Colonial Red	35	9	●	●	●	□	●	□	●	○	○	○	○	○	○	●	●
	Cool Old Town Gray	43	27	●	●	●	□	●	□	●	●	●	●	○	○	○	●	●
	Cool Zinc Gray	39	20	●	●	●	□	●	□	●	●	●	●	○	○	○	●	●
	Cool Slate Gray	33	12	●	●	●	□	●	□	●	●	●	●	○	○	○	●	●
	Cool Midnight Bronze	27	7	●	●	●	□	●	□	●	●	●	●				●	●
	Cool Matte Black*	29	5	●	●	●	□	●	□	●	●	●	●	○	○	○	●	●
	Cool Tahoe Blue	33	14	●	●	●	□	●	□	●	●	●	●	○	○	○	●	●
	Cool Regal Blue	29	10	●	●	●	□	●	□	●	●	●	●	○	○	○	●	●
	Cool Sage Green	41	21	●	●	●	□	●	□	●	●	●	●				●	●
	Cool Leaf Green	30	11	●	●	●	□	●	□	●	●	●	●	○	○	○	●	●
	Cool Forest Green	29	9	●	●	●	□	●	□	●	●	●	●	○	○	○	●	●
DURA TECH™ mx (PVDF)1																		
	Cool Metallic Silver	65	50	●	●	●	□	●	□	●	●	●	●	○	○	○	●	●
	Cool Silversmith	58	54	●	●	●	□	●	□	●	○	○	○				○	●
	Cool ZACTique® II	39	22	●	●	●	□	●	□	●	●	●	●	○	○	○	●	●
	Cool Metallic Champagne	54	33	●	●	●	□	●	□	●	●	●	●	○	○	○	●	●
	Cool Metallic Copper	53	29	●	●	●	□	●	□	●	○	○	○				○	●
DURA TECH™ nt (SMP)																		
	Chestnut Brown	36	12								■	■	■	■	■	■	■	■
	Desert Beige	58	39								■	■	■	■	■	■	■	■
	Surf White	74	59								■	■	■	■	■	■	■	■
	Rustic Red	43	13								■	■	■	■	■	■	■	■
	Denali Green	29	11								■	■	■	■	■	■	■	■
	Tahoe Blue	33	14								■	■	■	■	■	■	■	■
	Old Town Gray	43	27								■	■	■	■	■	■	■	■
	Weathered Copper	32	11								■	■	■	■	■	■	■	■
	Winter White	88	74								■	■	■	■	■	■	■	■
	Light Stone	70	53								■	■	■	■	■	■	■	■
PREMIUM COLORS 1																		
	Natural Rust	32	10								■	■	■					■
	Vintage®	22	20	○	○	○	○	○	○	○	○	○	○				○	○
BARE (Clear Acrylic Coated)																		
	ZINCALUME® Plus	64	67	●	●	●	●	●	●	●	●	●	●	●	●	●	●	●
IRONOX (Black Steel)																		
	IronOx²												□					
PRE-PRIMER																		
	Pre-Primed Two Sides	N/A	N/A															○

PAINT SYSTEM	SMP	PVDF
OVERALL	Better	Best
PRICE POINT	Moderate	Higher
WARRANTY	Long	Longest
DURABILITY	Medium to high. Improved weatherability	Highest weatherability
APPLICATION	Residential and commercial	High-end, architectural and commercial
OTHER ATTRIBUTES	Wide range of colors and gloss options	Excellent chalk and fade resistance

DURA TECH™ 5000: A premium 70% Fluoropolymer (PVDF) paint system.

DURA TECH™ mx: A premium Fluoropolymer (PVDF) Pearlescent paint system.

VINTAGE® COATED METAL: TruZinc® G90 substrate with a FEVE paint system and graffiti-resistant qualities.

DURA TECH™ nt: Silicone-modified polyester (SMP). Used in most residential roofing products sold today.

1 BATCH SENSITIVITY: Prints and metallic coatings are batch sensitive (may have color variation) and are directional in nature. Different batches are not to be mixed on projects. AEP Span recommends requesting a sample to review actual color before ordering to ensure color accuracy. AEP Span is not responsible for color variations.

SRI: Solar Reflective Index.
LRV: Light Reflectance Value.

SRI values in accordance with ASTM E1980 and are based on independent testing. Cool Roof Rating Council (CRRC) performance values for CA Title 24 are based on color families and will differ from those listed in table.

* AVAILABLE IN ALUMINUM .040" ONLY: Stocked in Matte Black and Regal White, and is available in 48" x 10' flat sheet.

Material is painted on both sides. One side is Matte Black and the other is Regal White.

²IRONOX: ²IronOx is black steel (uncoated and unpainted), that rusts naturally. No warranty is offered or implied. Only available in 22 GA Nu-Wave® Corrugated.

REPRESENTATION OF COLORS MAY VARY DUE TO PRINTING LIMITATIONS.

Sample color chips are available upon request. Consult your AEP Span representative for more information.



800-733-4955

aepspan.com

