



PERFORMING ARTS

# SPECIALTY FINISHES

Premium Special Order Metal Roofing & Siding Colors

# Introduction & Table of Contents

AEP Span's Specialty Finishes collection showcases a curated range of special order (non-stocked) metal finishes, offering expanded design possibilities for distinctive architectural applications. This resource includes detailed specifications and performance data to support confident finish selection and specification.

## TABLE OF CONTENTS

- 2 Design Considerations
- 3 Custom Colors
- 3 Graffiti-Resistant Coating
- 4 Natural Matte® PVDF
- 5 Classic Brushed
- 5 Aged Metallics
- 6 Rustic
- 7 Rawhide
- 7 Textured Rustics
- 8 Vintage® Heritage
- 8 Matte Woodgrain
- 9 Project Gallery
- 10 Next Steps

## ORDERING CONSIDERATIONS

Custom colors and specialty finishes are subject to minimum order requirements of 2,500 linear feet. Gauge and panel profile limitations apply, see online product page for details. Select 24ga finishes may be available in smaller quantities, subject to availability.

Inquire with your AEP Span Representative for more information.

## SPECIFICATION CONSIDERATIONS

### **SPECIALTY PRINTS, ALUMINUM, & CUSTOM COLORS AVAILABLE BY SPECIAL ORDER**

Inquire with your AEP Span Sales Representative for lead times and minimum order requirements.

### **BATCH & DIRECTIONAL SENSITIVITY**

Many specialty finishes are batch sensitive (may have color variation) and are directional in nature. Different batches are not to be mixed on projects. Avoid mixing orientation to ensure a clean installed look. AEP Span recommends requesting a sample to review actual color before ordering to ensure color accuracy. AEP Span is not responsible for color variations.

### **OIL CANNING**

All flat metal surfaces can display waviness commonly referred to as “oil canning”. Oil canning is an inherent characteristic of steel products, not a defect, and therefore is not a cause for panel rejection.

### **SAMPLES**

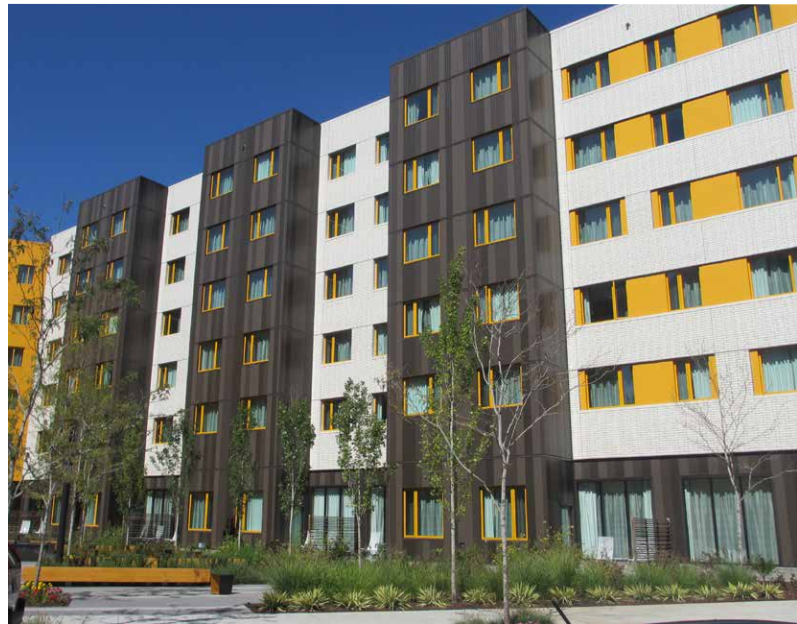
Request sample color chips to ensure colors and finishes match your desired result. Samples are available by request online or consult your AEP Span representative for more information.

# Custom Colors

Special order custom colors can elevate your design to new heights through a spectrum of possibilities. Custom colors provide a kaleidoscope of options to suit any aesthetic.



Custom colors are available with minimum order requirements and extended lead times.



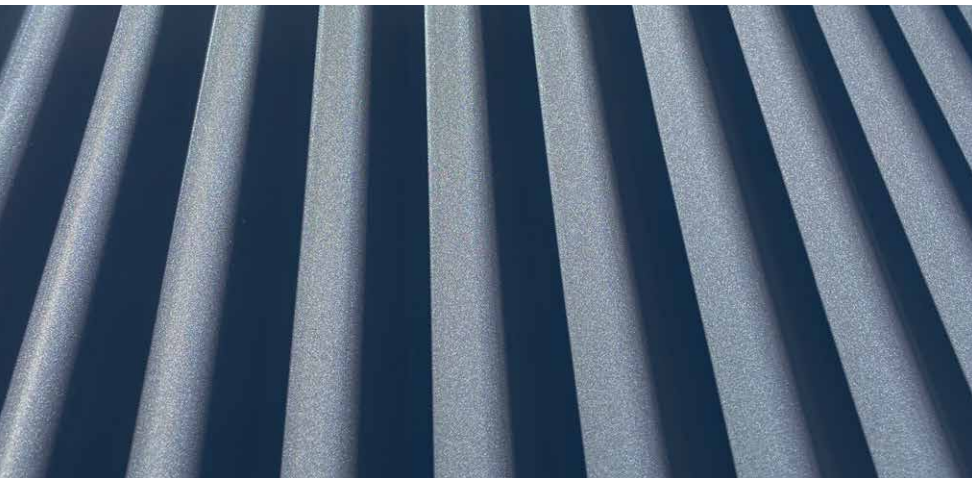
# Graffiti-Resistant Coating

AEP Span's factory applied Graffiti-Resistant Coating System is formulated to work with World's Best Sensitive Surface Graffiti Remover (SSGR). The clear graffiti-resistant coating works as a barrier of protection over prepainted architectural metal panels, preventing most graffiti materials from gripping or shadowing the metal surface.

## FEATURE & BENEFITS:

- Lower building maintenance costs.
- Extends the beauty and value of your property.
- Available in a standard low-medium gloss or premium custom high-gloss.
- Offered on all panel profiles, inquire for lead times.
- 30-Year Limited Warranty.
- Sensitive Surface Graffiti Remover sold separately through World's Best Graffiti Removal System.





Natural Matte PVDF offers a sophisticated, ultra low-gloss aesthetic that enhances architectural and commercial designs. Its soft, reduced shine finish minimizes glare while preserving depth and richness of color. Engineered for long-term performance, this collections delivers consistent color, durability, and a clean, modern appearance across a variety of applications.

### DESIGN CONSIDERATIONS:

- **Paint System:** PVDF (Dura Tech® 5000p)
- **Gauge:** 24ga & 22ga
- **Substrate:** ZINCALUME®
- **Batch Sensitivity:** No
- **Warranty:** 40-Year film integrity, color fade and chalking warranty

	Basalt	Graphite	Ore	Frost
Solar Reflectivity (SR)	0.31	0.28	0.27	0.71
Emissivity	0.86	0.86	0.86	0.87
Solar Reflectance Index (SRI)	31	28	27	86
Gloss	3-6	3-6	3-6	3-6
Light Reflectance Value (LRV)	13	9	8	79



**Basalt**  
SRI 31 • LRV 13



**Graphite**  
SRI 28 • LRV 9



**Ore**  
SRI 27 • LRV 8



**Frost**  
SRI 86 • LRV 79

# Classic Brushed

Classic Brushed finishes replicate the refined appearance of brushed metal while offering the consistency and performance of coated metal. As a cost-effective alternative to stainless steel, bronze, zinc, and aluminum, these finishes enable versatile design across exterior and interior applications with a clean, modern aesthetic.

## DESIGN CONSIDERATIONS:

- **Paint System:** PVDF (Dura Tech® 5000p)
- **Gauge:** 26ga, 24ga, & 22ga
- **Substrate:** ZINCALUME® or TruZinc® (galvanized)
- **Batch Sensitivity:** Batch sensitive & Directional
- **Warranty:** 30-Year limited & 30-Year color fade & chalking



**Timeless Bronze**  
SRI 39 • LRV 19



**Timeless Copper**  
SRI 43 • LRV 22



**Timeless Silver**  
SRI 52 • LRV 39

# Aged Metallics

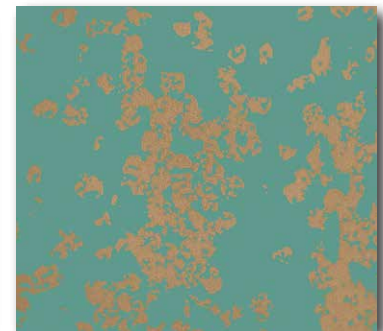
Aged Metallic finishes feature multi-dimensional surfaces, replicating the character of naturally weathered metals. Layered color variation and pattern create depth and richness. These finishes are well-suited for roofing and siding applications where a dynamic, evolving appearance is desired.

## DESIGN CONSIDERATIONS:

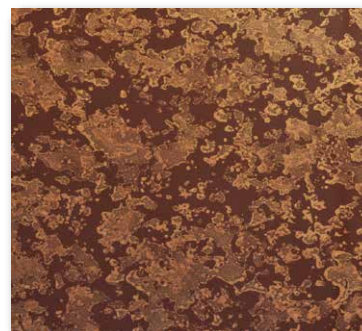
- **Paint System:** PVDF (Dura Tech® 5000p)
- **Gauge:** 26ga, 24ga, & 22ga
- **Substrate:** ZINCALUME® or TruZinc® (galvanized)
- **Batch Sensitivity:** Batch sensitive & Directional
- **Warranty:** 30-Year limited & 30-Year color fade & chalking



**Antique Copper**  
SRI 35 • LRV 26



**Natural Antique Copper**  
SRI 37 • LRV 25



**Rustic Copper**  
SRI 35 • LRV 12



**Weathered Zinc**  
SRI 47 • LRV 39

Designed to complement natural surroundings, Rustic metal prints capture the character of weathered steel through layered tones and organic patterns. These finishes add depth and visual texture to architectural surfaces, making them well-suited for exterior applications such as roofing and siding.

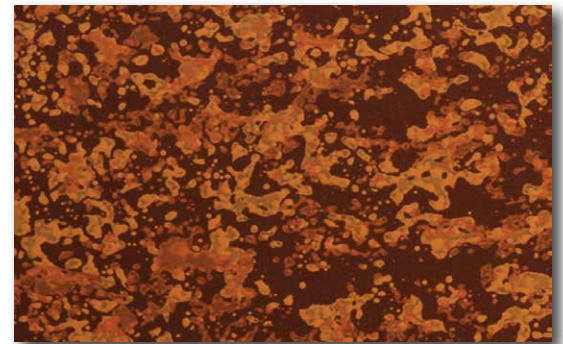
## DESIGN CONSIDERATIONS:

- **Paint System:** PVDF (Dura Tech® 5000p)
- **Gauge:** 26ga, 24ga, & 22ga
- **Substrate:** ZINCALUME® or TruZinc® (galvanized)
- **Batch Sensitivity:** Batch sensitive & Directional
- **Warranty:** 30-Year limited & 30-Year color fade & chalking
- **Natural Rust** is offered in a 26ga SMP (Dura Tech® xlp) paint system for our Nu-Wave® Corrugated, HR-36®, and Box Rib™ products as a standard offer for quicker delivery.



**Sedona Rust**

SRI 34 • LRV 10



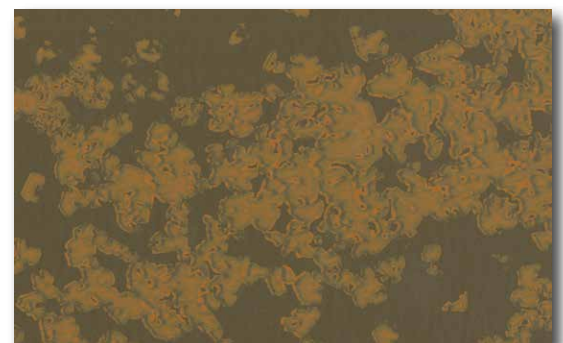
**Burnt Rust**

SRI 36 • LRV 13



**Natural Rust (PVDF)**

SRI 33 • LRV 10



**Natural Rust (SMP)**

SRI 30 • LRV 12



# Rawhide

The Rawhide palette features nine richly textured finishes that blend natural, earthy tones with a subtle tactile surface. Engineered for durability, these coatings provide excellent adhesion, formability, and long-term performance, with enhanced resistance to solvents for demanding exterior applications.

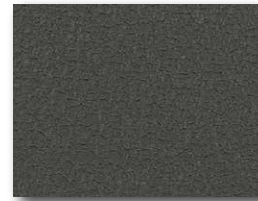
## DESIGN CONSIDERATIONS:

- **Paint System:** Super Durable Polyester
- **Gauge:** 26ga, 24ga, & 22ga
- **Substrate:** ZINCALUME® or TruZinc® (galvanized)
- **Batch Sensitivity:** No
- **Warranty:** 40-Year limited & 30-Year color fade & chalking



**Apache**

SRI 27 • LRV 7



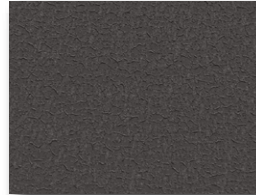
**Ash Gray**

SRI 31 • LRV 10



**Burnished Slate**

SRI 28 • LRV 9



**Steel Gray**

SRI 26 • LRV 7



**Coal Black**

SRI 24 • LRV 5



**Dark Walnut**

SRI 24 • LRV 6



**Hartford**

SRI 23 • LRV 8



**Hickory**

SRI 49 • LRV 29



**Slate Gray**

SRI 42 • LRV 20

# Textured Rustics

Textured Rustics combine multi-toned color variation with a tactile, wrinkled surface. Inspired by naturally weathered metal, these finishes deliver depth, texture, and a rich, dimensional appearance across architectural applications. Designed to bring warmth and character to modern materials, they offer a distinctive alternative to traditional flat finishes.

## DESIGN CONSIDERATIONS:

- **Paint System:** Super Durable Polyester
- **Gauge:** 26ga, 24ga, & 22ga
- **Substrate:** ZINCALUME® or TruZinc® (galvanized)
- **Batch Sensitivity:** Batch sensitive & Directional
- **Warranty:** 30-Year limited & 20-Year color fade & chalking



**Rustic Rawhide®**

SRI 32 • LRV 8



**Sedona Rawhide™**

SRI 30 • LRV 17

Vintage® Heritage features two distinct finishes that create a softly weathered appearance through layered, semi-translucent color. Subtle variation and light reflectivity bring depth and visual interest to the surface, delivering a time-worn aesthetic with the durability of modern coated metal. Suitable for both roofing and siding applications.



**Legacy**

SRI 20 • LRV 17



**Evolution**

SRI 22 • LRV 15

## DESIGN CONSIDERATIONS:

- **Paint System:** FEVE
- **Gauge:** 24ga & 22ga
- **Substrate:** TruZinc® (galvanized)
- **Batch Sensitivity:** Batch sensitive & Directional
- **Warranty:** 20-Year limited & 20-Year color fade & chalking

# Matte Woodgrain

Matte Woodgrain finishes capture the warmth and character of natural wood through detailed grain patterns and a low-gloss appearance. These finishes provide a refined solution for exterior and interior applications. Matte Red Cedar and Matte Barnwood feature a smooth, low-gloss finish, while Black Cedar incorporates a textured surface for added realism.

## DESIGN CONSIDERATIONS:

- **Paint System:**
  - **Matte Barnwood & Matte Red Cedar:** SMP
  - **Black Cedar:** Textured Super Durable Polyester
- **Gauge:** 26ga, 24ga, & 22ga
- **Substrate:** ZINCALUME® or TruZinc® (galvanized)
- **Batch Sensitivity:** Batch sensitive & Directional
- **Warranty:**
  - **Matte Barnwood & Matte Red Cedar:** 25-year film integrity & chalking
  - **Black Cedar:** 30-year film integrity & 20-year chalking



**Matte Red Cedar**

SRI 26 • LRV 11



**Matte Barnwood**

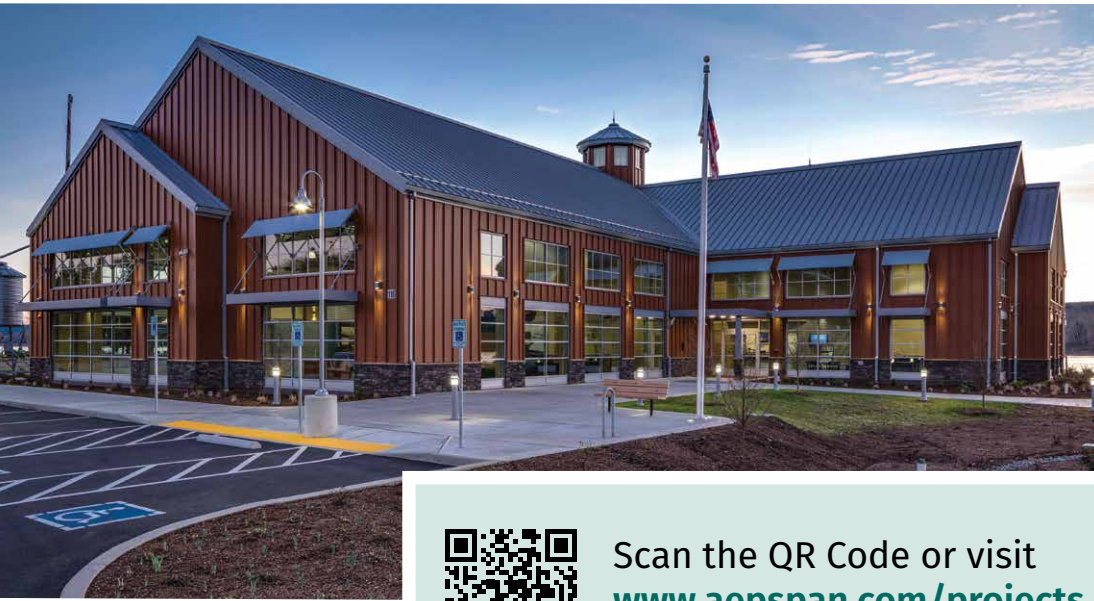
SRI 38 • LRV 16



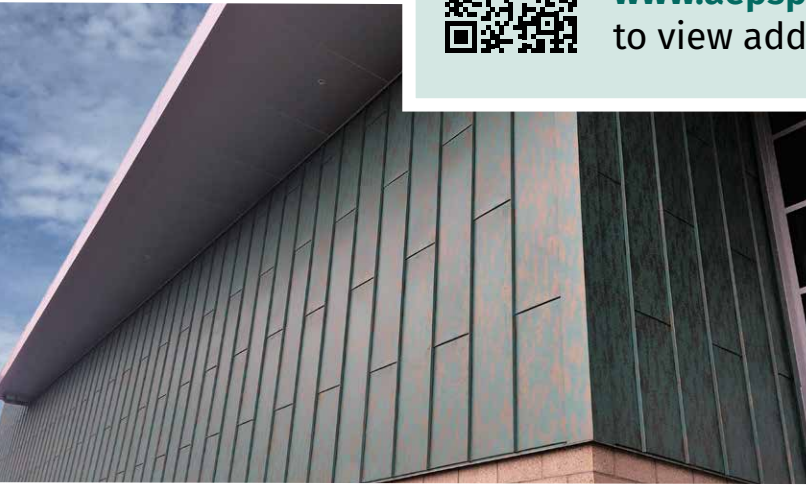
**Black Cedar**

SRI 4 • LRV 21

# Project Gallery



Scan the QR Code or visit  
[www.aepspan.com/projects](http://www.aepspan.com/projects)  
to view additional inspiration.



## REQUEST FREE PRODUCT SAMPLES & LITERATURE

Experience AEP Span Specialty Finishes in their intended environment with physical samples designed to support confident specification.

- Evaluate true color, texture, and gloss
- Review finishes in real-world lighting conditions
- Compare materials alongside your project palette

Scan the QR Code or visit [www.aepspan.com/sample-request](http://www.aepspan.com/sample-request) to experience these finishes for yourself.



*Samples are free and processed by our dedicated Sample Fulfillment Center.*

## Engineered to Perform. Designed to Inspire.

### CONNECT WITH AEP SPAN

**Ready to Move Forward?**

Scan the QR Code or visit [www.aepspan.com/ask-aep-span](http://www.aepspan.com/ask-aep-span) to connect with a representative for pricing, availability, and technical support.



From distinctive finishes to proven performance, AEP Span helps bring your design to life with confidence. With specialty finishes engineered for both visual impact and long-term durability, you can specify with confidence knowing your material will perform as beautifully as it looks.



Experience the colors, textures, and finishes for yourself.  
Request physical samples online today.

800-733-4955  
[www.aepspan.com](http://www.aepspan.com)



FINISHES DEVELOPED BY

