



SPRIDGE

# SPECIALTY FINISHES

Premium Non-Standard Metal Roofing & Siding Colors



# Introduction & Table of Contents

AEP Span's non-standard Specialty Finishes Catalog showcases an extensive range of innovative and high-quality metal finishes to meet the most discerning architectural design needs. This catalog also provides detailed specifications and performance data to aid in the finish selection and specification process.

## Table of Contents

2.....Custom Solid Colors	4.....Aged Metallics
2.....Graffiti-Resistant Coating	5.....Rustic
3.....Vintage® Heritage	6.....Rawhide
3.....Matte Woodgrain	6.....Textured Rustics
4.....Classic Brushed	

### Things to Consider When Ordering

Custom colors and specialty finishes are subject to minimum 2,500 linear feet quantities, in addition to gauge and panel profile limitations. Select 24ga finishes may be available in smaller quantities, subject to material availability. These products include:

- Textured Rustics
- Matte Woodgrains

**Inquire with your AEP Span representative for more information.**

### Things to Consider When Specifying

#### **CUSTOM COLORS, SPECIALTY FINISHES, PRINTS, & TEXTURES**

Available as special orders with minimum order requirements and extended lead times.

#### **BATCH & DIRECTIONAL SENSITIVITY**

Specialty finishes are batch sensitive (may have color variation) and are directional in nature. Different batches are not to be mixed on projects. Avoid mixing orientation to ensure a clean installed look. AEP Span recommends requesting a sample to review actual color before ordering to ensure color accuracy. AEP Span is not responsible for color variations.

#### **OIL CANNING**

All flat metal surfaces can display waviness commonly referred to as "oil canning". Oil canning is an inherent characteristic of steel products, not a defect, and therefore is not a cause for panel rejection.

#### **SAMPLES**

Request sample color chips to ensure colors and finishes match your desired result. Samples are available by request online or consult your AEP Span representative for more information.

# Custom Solid Colors

AEP Span's special order Custom Solid Colors can elevate your design to new heights through a spectrum of possibilities. Custom colors provide a kaleidoscope of colors to suit any aesthetic.



**Custom colors may be subject to longer leads times, availability, pricing and other considerations. Please inquire with your AEP Span Representative for more information.**



## Graffiti-Resistant Coating System

Architectural metal siding not only shields a building from nature's elements, it can protect your project from graffiti. AEP Span's factory applied Graffiti-Resistant Coating System is formulated to work with PPG Industries' DuraPrep® Prep 400 graffiti remover. The graffiti-resistant coating system works as a barrier of protection over prepainted architectural metal panels, preventing most graffiti material from gripping or shadowing the metal surface. If your project is tagged, just spray the DuraPrep® Prep 400 on the metal surface and the graffiti wipes off.

### FEATURES AND BENEFITS:

- Lower building maintenance costs.
- Extends the beauty and value of your property.
- Available in a standard low-medium gloss or premium custom high-gloss in a variety of colors.
- Offered on all AEP Span profiles, inquire for lead times.
- 30 year Limited Warranty.
- DuraPrep® Prep 400 sold separately through PPG industries.



DURAPREP® is a registered trademark of PPG Architectural Finishes, Inc.



# Vintage® Heritage

Vintage Heritage is a mesmerizing printed coating offered in two distinct finishes ideal for metal roofing and metal siding applications. As light reflects onto the painted metal surface, the effect captures multiple natural hues. These classic vintage colors provide a time-worn appearance with the durability and longevity of modern metal attributes.



**Legacy**

SRI 20 • LRV17



**Evolution**

SRI 22 • LRV 15

## DESIGN CONSIDERATIONS:

- **Paint System:** FEVE
- **Gauge:** 22ga & 24ga
- **Substrate:** TruZinc® (galvanized)
- **Warranty:** 20-Year limited & 20-Year color fade & chalking

# Matte Woodgrain

Matte Woodgrain prints offer the warmth and natural beauty of wood combined with the durability of metal. Compared to wood, metal is a safer alternative as well as rot and termite resistant. It is also easier to maintain. Offered in Matte Red Cedar and Matte Barnwood, these woodgrain prints are ideal for both metal roofing and siding, as well as unique interior applications.

## DESIGN CONSIDERATIONS:

- **Paint System:** SMP
- **Gauge:** 22ga, 24ga, & 26ga
- **Substrate:** ZINCALUME® or TruZinc® (galvanized)
- **Warranty:** 25-Year limited & 25-Year color fade & chalking



**Matte Red Cedar**

SRI 26 • LRV 11



**Matte Barnwood**

SRI 38 • LRV 16

# Classic Brushed

Whether your design is contemporary or traditional, this Classic Brushed printed coating product offers a great alternative to more expensive materials like stainless, bronze, zinc, and aluminum. Ideal for both exterior and interior applications, these immutable prints demonstrate the design flexibility of metal while offering style and performance.



## DESIGN CONSIDERATIONS:

- **Paint System:** PVDF (Dura Tech™ 5000p)
- **Gauge:** 22ga, 24ga, & 26ga
- **Substrate:** ZINCALUME® or TruZinc® (galvanized)
- **Warranty:** 30-Year limited & 30-Year color fade & chalking



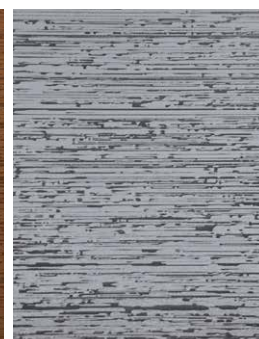
**Timeless Bronze**

SRI 39 • LRV 19



**Timeless Copper**

SRI 43 • LRV 22



**Timeless Silver**

SRI 52 • LRV 39

# Aged Metallics

These four Aged Metallic prints have a multi-dimensional finish that shines brilliantly in the natural sunlight. The variety of aged finishes offer stunning options for metal roofing or metal siding applications.



**Antique Copper**

SRI 35 • LRV 26



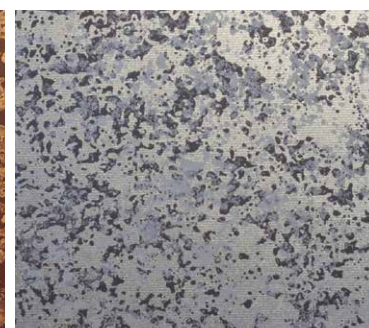
**Natural Antique Copper**

SRI 37 • LRV 25



**Rustic Copper**

SRI 35 • LRV 12



**Weathered Zinc**

SRI 47 • LRV 39

## DESIGN CONSIDERATIONS:

- **Paint System:** PVDF (Dura Tech™ 5000p)
- **Gauge:** 22ga, 24ga, & 26ga
- **Substrate:** ZINCALUME® or TruZinc® (galvanized)
- **Warranty:** 30-Year limited & 30-Year color fade & chalking



# Rustic

Looking to blend in? Rustic metal prints provide the aesthetics of weathered metal with natural colors and patterns—adding more dimension to the surrounding environment. Ideal for exterior applications such as roofing and siding.

## DESIGN CONSIDERATIONS:

- **Paint System:** PVDF (Dura Tech™ 5000p)
- **Gauge:** 22ga, 24ga, & 26ga
- **Substrate:** ZINCALUME® or TruZinc® (galvanized)
- **Warranty:** 30-Year limited & 30-Year color fade & chalking
- Natural Rust is offered in a 26ga SMP (Dura Tech™ xlp) paint system for our Nu-Wave® Corrugated product as a standard offer for quicker delivery. **Inquire with your AEP Span Sales Representative for more information.**



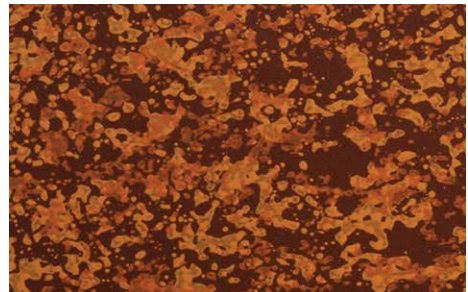
### Sedona Rust

SRI 34 • LRV 10



### Natural Rust

SRI 33 • LRV 13



### Burnt Rust

SRI 36 • LRV 13



# Rawhide

There are nine rich colors to choose from in the Rawhide coated metal palette. Durability, high-performance, excellent adhesion, and formability are among the qualities this textured metal collection possesses. The added benefit of this group is the outstanding resistance to solvents.

## DESIGN CONSIDERATIONS:

- **Paint System:** Super Durable Polyester
- **Gauge:** 22ga, 24ga & 26ga
- **Substrate:** ZINCALUME® or TruZinc® (galvanized)
- **Warranty:** 40-Year limited & 30-Year color fade & chalking



**Apache**  
SRI 27 • LRV 7



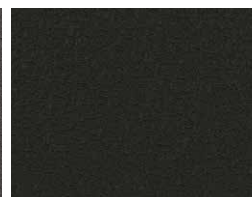
**Ash Gray**  
SRI 31 • LRV 10



**Burnished Slate**  
SRI 28 • LRV 9



**Steel Gray**  
SRI 26 • LRV 7



**Coal Black**  
SRI 24 • LRV 5



**Dark Walnut**  
SRI 24 • LRV 6



**Hartford**  
SRI 23 • LRV 8



**Hickory**  
SRI 49 • LRV 29



**Slate Gray**  
SRI 42 • LRV 20

# Textured Rustics

Textured Rustics includes Rustic Rawhide® and Sedona Rawhide™, two finishes that provide unmatched color experience with the engaging combination of color and texture. These textured finishes feature a multi-toned weathered metal design in conjunction with a wrinkled paint system for optimum authenticity.

## DESIGN CONSIDERATIONS:

- **Paint System:** Super Durable Polyester
- **Gauge:** 22ga, 24ga & 26ga
- **Substrate:** ZINCALUME® or TruZinc® (galvanized)
- **Warranty:** 30-Year limited & 20-Year color fade & chalking



**Rustic Rawhide**  
SRI 32 • LRV 8



**Sedona Rawhide**  
SRI 30 • LRV 17



**Request samples today to see these  
metal color design solutions for yourself.**

800-733-4955  
[www.aepspan.com](http://www.aepspan.com)

**FINISHES DEVELOPED BY**

