

Miscellaneous Details

Installation Guide

Misc. Installation Details

- Table of Contents -

Section	Page
<i>General Notes</i>	<i>i</i>
<i>Roof Curb (Plan)</i>	<i>1</i>
<i>Roof Curb (Rake)</i>	<i>2</i>
<i>Roof Curb (Section)</i>	<i>3</i>
<i>Roof Curb (Uphill)</i>	<i>4</i>
<i>Roof Curb (Details)</i>	<i>5</i>
<i>Roof Jack</i>	<i>6</i>
<i>Expansion Joint</i>	<i>7</i>
<i>Vented Ridge</i>	<i>8</i>
<i>Slope Transition (High to Low)</i>	<i>9</i>
<i>Penetration @ Rib (Zee Install)</i>	<i>10</i>
<i>Penetration @ Rib (Flashing Install)</i>	<i>11</i>
<i>Bullnose Eave</i>	<i>12</i>
<i>Bullnose Eave with Gutter</i>	<i>13</i>
<i>Panel to TPO</i>	<i>14</i>
<i>Parapet Cap Splice</i>	<i>15</i>
<i>Slope Transition (Low to High)</i>	<i>16</i>
<i>Half Round Roof Vent</i>	<i>17</i>
<i>Half Round Roof Vent (Zee Install)</i>	<i>18</i>

General Notes

The attached installation details are intended to be a design aid and do not depict all situations. Modifications are the responsibility of the designer/user and should take into account climate conditions such as wind and snow, governing code requirements, and the actual usage and maintenance of the structure.

Flashings:

Where possible, flashings should be lapped away from prevailing winds. Certain flashings should be supported if it is likely that equipment (ladder, etc.) will be used against them. It is good practice to specify that all flashings be of the same material (gauge, color, finish) as the roof panels to ensure long-term durability. Field-painted flashings rarely equal the durability and colorfastness of factory baked-on paint systems. The enclosed details have minimized the use of exposed fasteners where possible. The edges of flashings have also been shown hemmed to strengthen and to minimize the exposure of cut edges.

Flashing design and fabrication is generally the responsibility of the contractor. For convenience, we have provided some typical flashing drawings on our AEP Span website. Note that flashing shapes and dimensions may vary greatly based on project requirements. Installation details and flashings referenced within are for general design guidance only.

Condensation, Insulation, & Ventilation:

It is the designer's responsibility to determine the need and composition of condensation control materials including insulation and vapor retarders, as well as ventilation requirements. Metal roof and wall products are susceptible to condensation and its control should be carefully considered.

Underlayments:

Prior to installation of metal roofing panels, it is recommended that an underlayment be installed over the roof substrate. AEP Span encourages the use of *AEP Span Underlayment HT* as it is designed

specifically for use under all AEP roofing systems and is suitable for use under any metal roofing system or coping. *AEP Span Underlayment HT* is **required** by AEP Span for AEP Span Full System Weathertightness Warranties. *AEP Span Underlayment HT* is a high temperature, self-healing, self-adhering, peel and stick underlayment with a non-abrasive surface that will not mar, scratch, or abrade the underside of metal panels and flashings. Please note that additional protection may be required to meet Class A fire ratings as defined in UL790 classified assemblies.

Thermal Movement:

Both panels and flashings must allow for thermal movement (expansion and contraction) of the materials, especially where long lengths are used. Appropriate gaps or provisions must be provided to accommodate thermal movement.

Oil Canning:

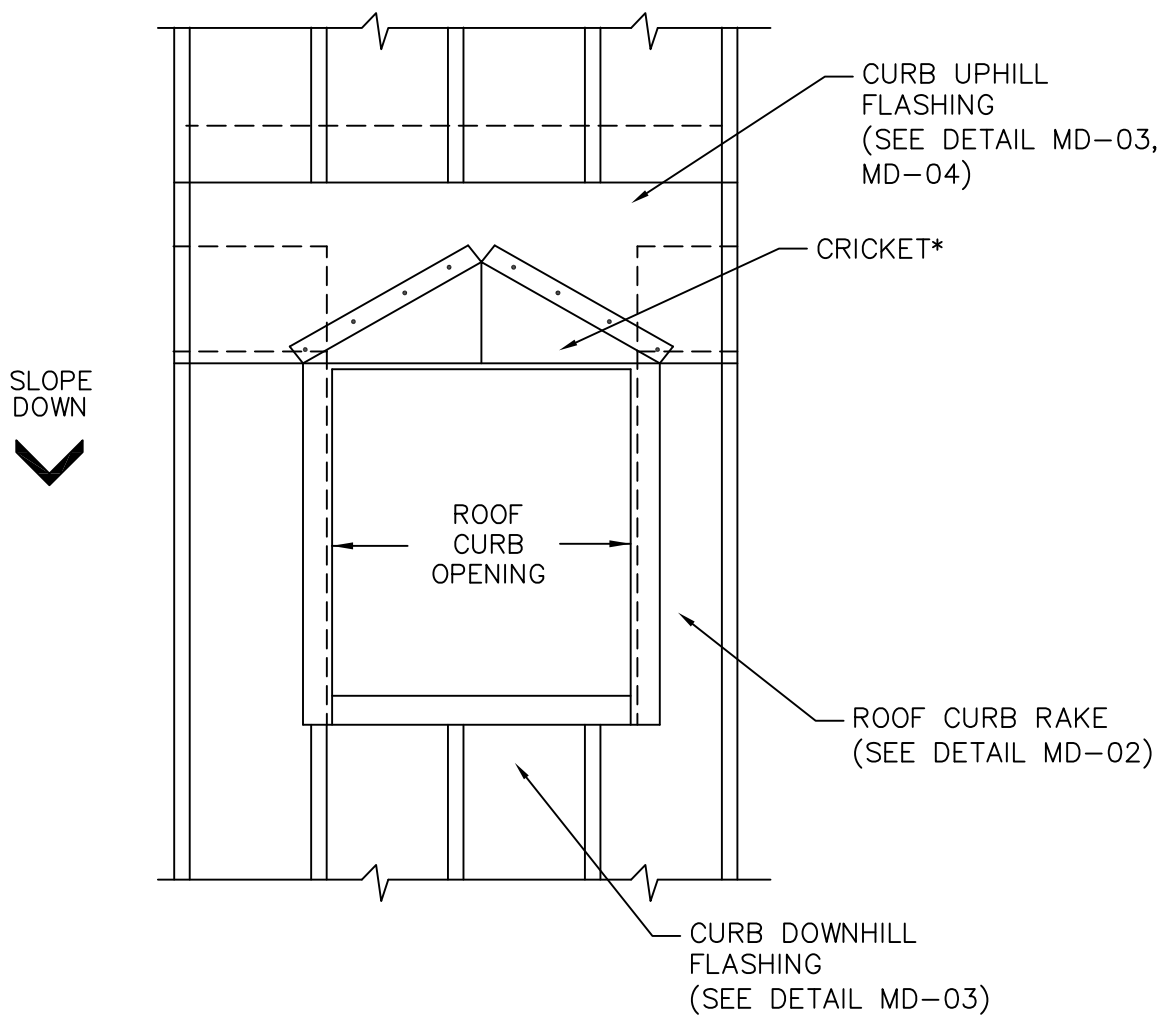
Flat metal surfaces often display waviness commonly referred to as 'oil canning'. This can be caused by variations in raw material, processing variations, product handling, or variations in the installation substrate. Oil canning is a characteristic, not a defect, of panels manufactured from light-gauge metal. To reduce potential for oil canning, substrates should not deviate from a flat plane more than 1/4 inch in 20 feet, or 1/8 inch in 5 feet. Oil canning is not a cause for panel rejection. Additional technical information is available upon request.

References:

The Sheet Metal and Air Conditioning Contractors' National Association Inc. (SMACNA) manual is an excellent reference for sheet metal contractors. It's guidelines for underlayments, gutter and downspout size requirements, and expansion/contraction of metals and flashing joints should be followed.

Technical Assistance:

Contact your AEP Span Sales Representative for additional information.



*— CRICKETS REQUIRED ON CURBS WIDER THAN 30"



MISC. DETAILS

ROOF CURB - PLAN VIEW

MD-01

EQUIPMENT TRIM*

FIELD FABRICATED
SIDEWALL TRIM

1/8" RIVETS @ 12" O.C.

ZEE CLOSURE

ROOF
CURB*
8" MIN

1" MIN

4" MIN.

3/16"x7/8"
BUTYL TAPE

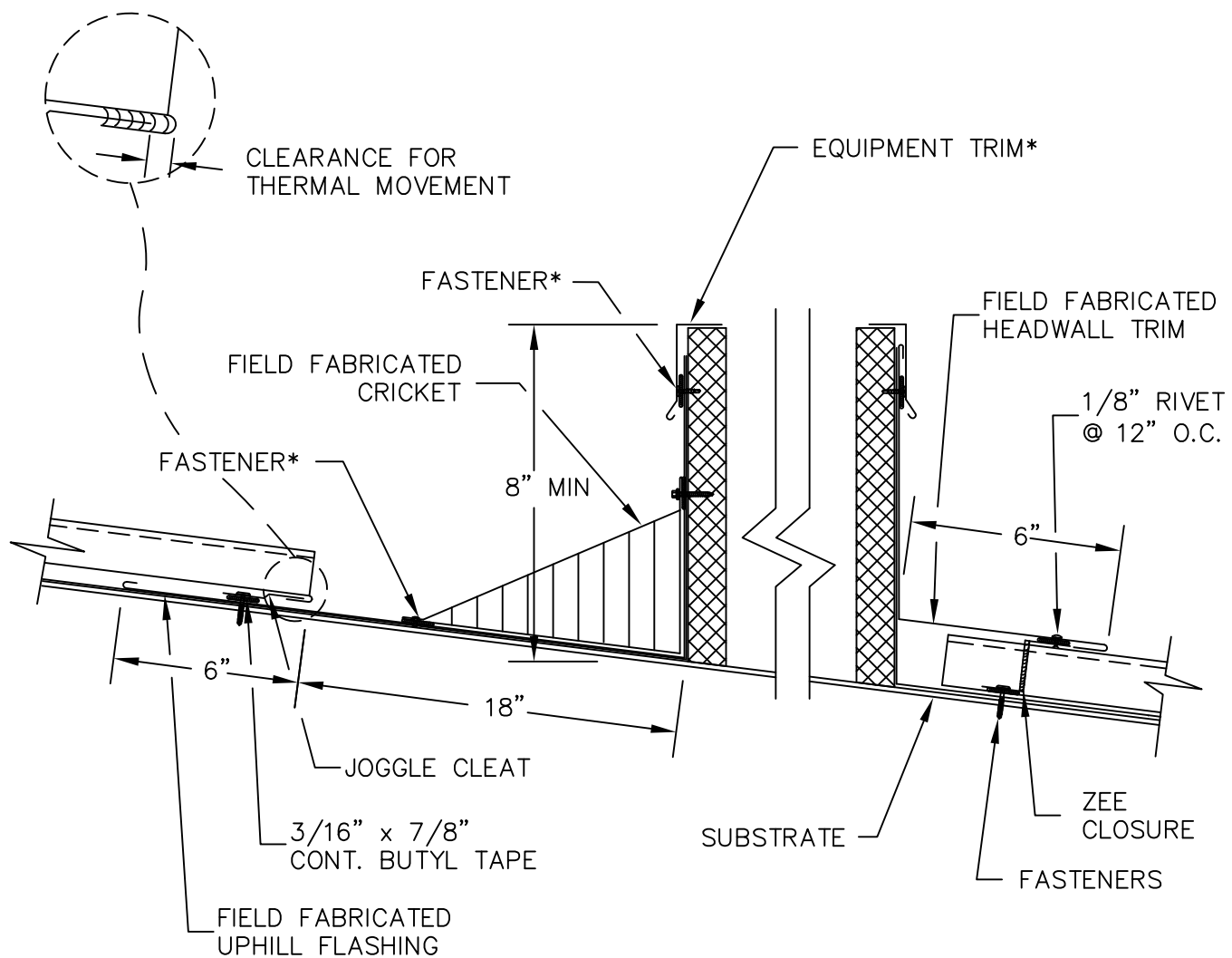
* — NOT BY AEP SPAN



MISC. DETAILS

ROOF CURB - RAKE

MD-02



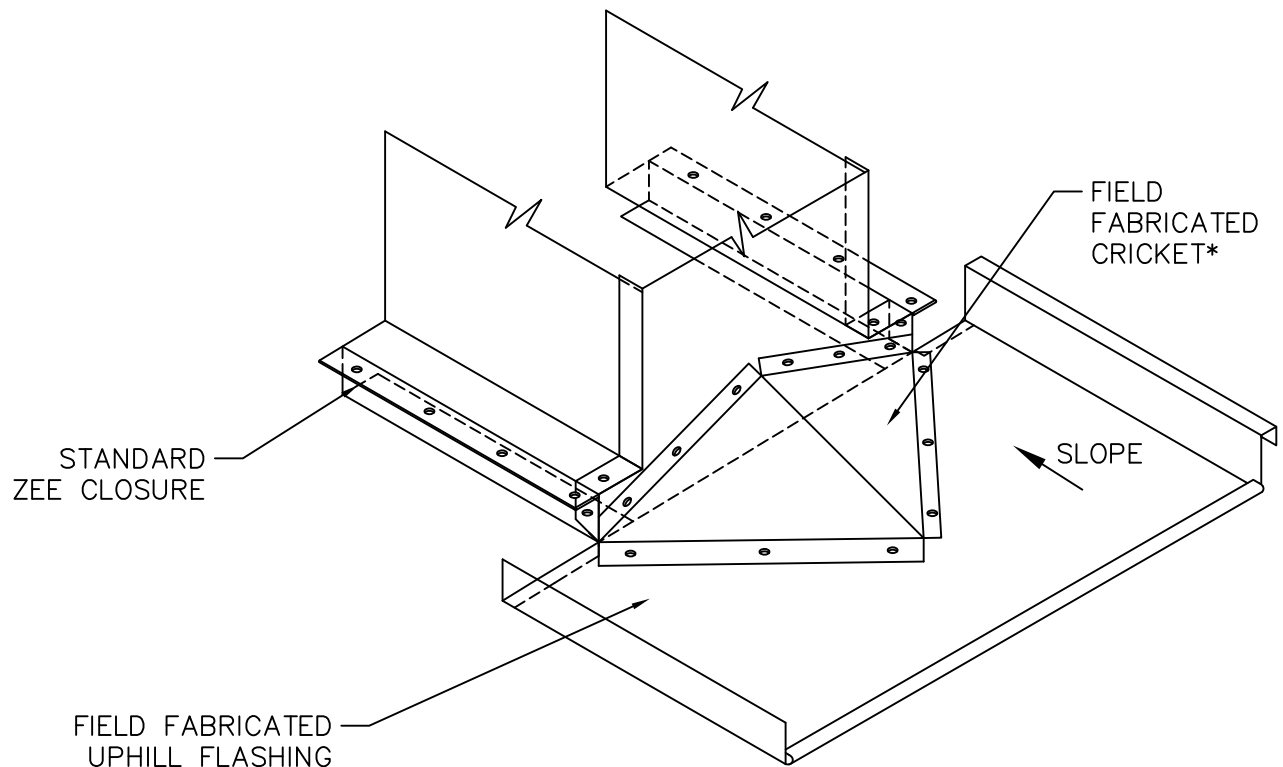
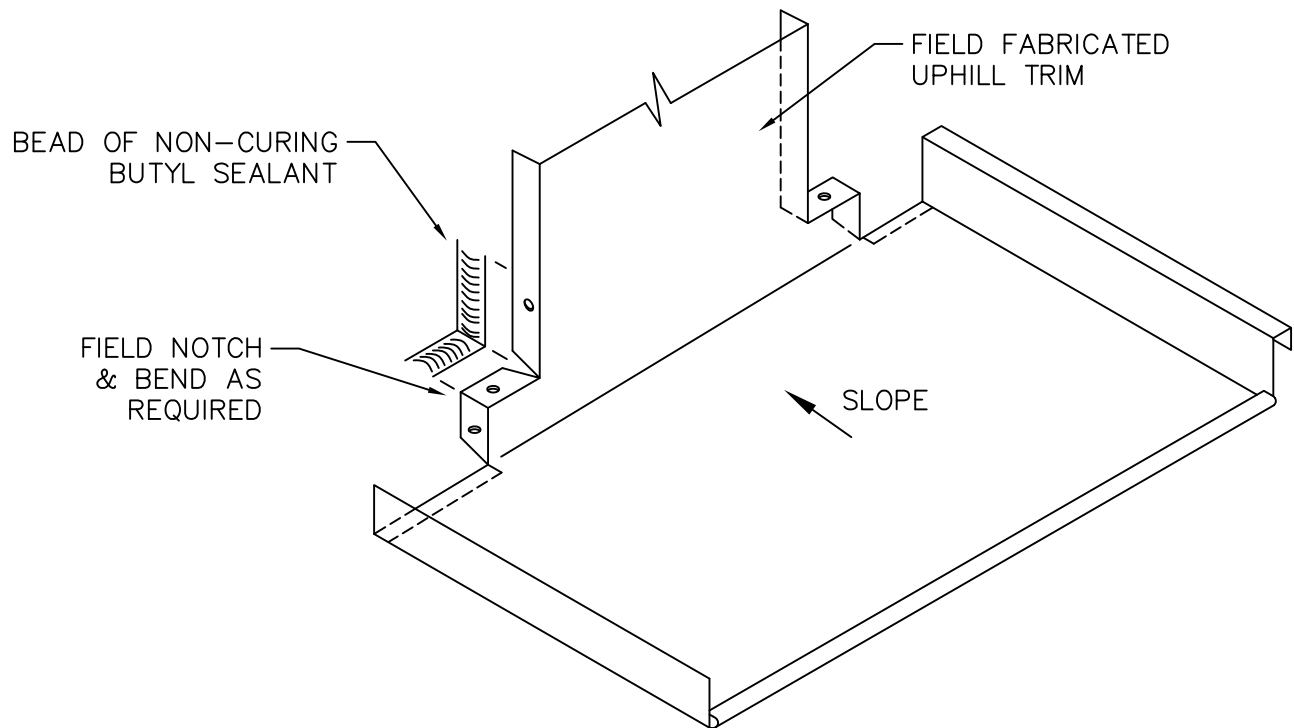
* — NOT BY AEP SPAN



MISC. DETAILS

ROOF CURB - SECTION

MD-03



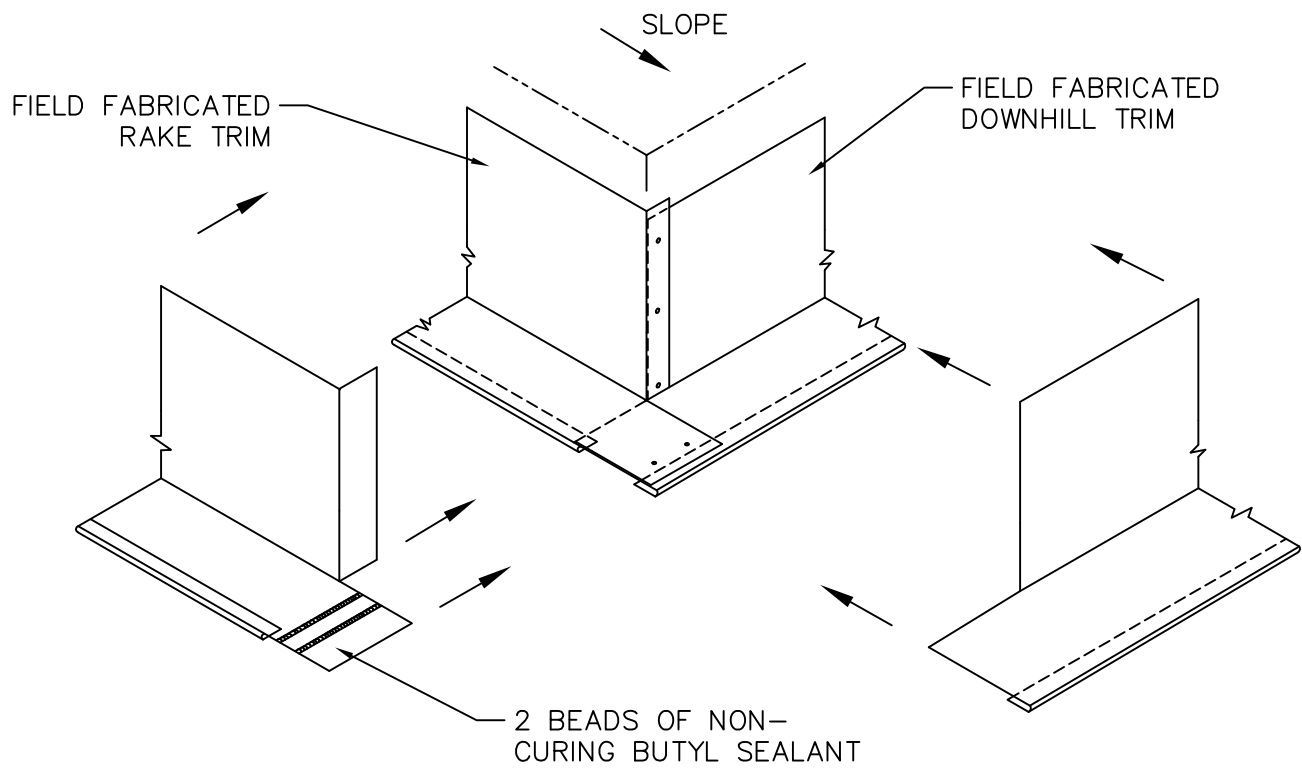
*— CRICKETS REQUIRED ON CURBS WIDER THAN 30"



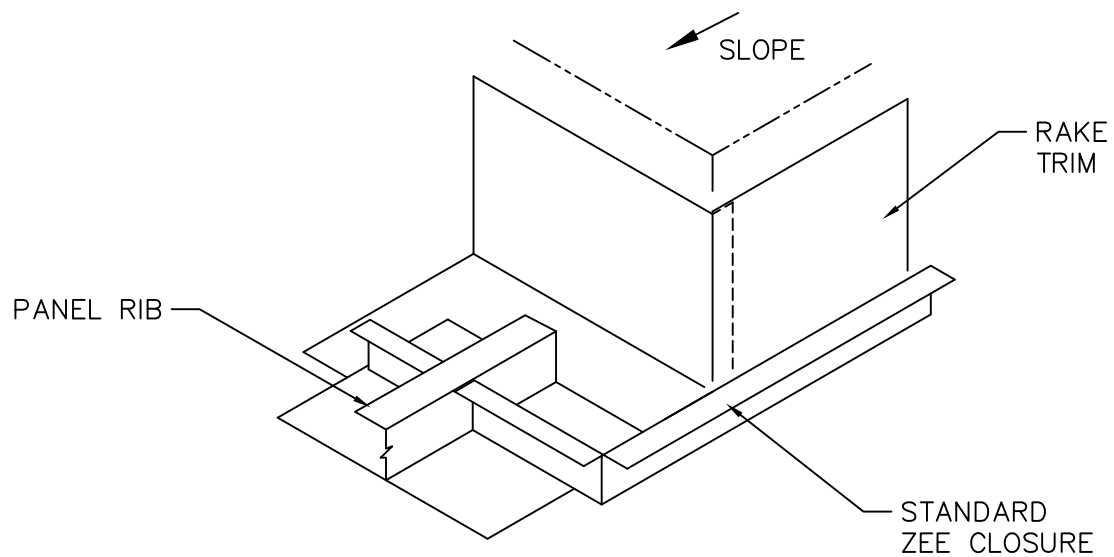
MISC. DETAILS

ROOF CURB - UPHILL

MD-04



HEADWALL DETAIL



ZEE CLOSURE DETAIL



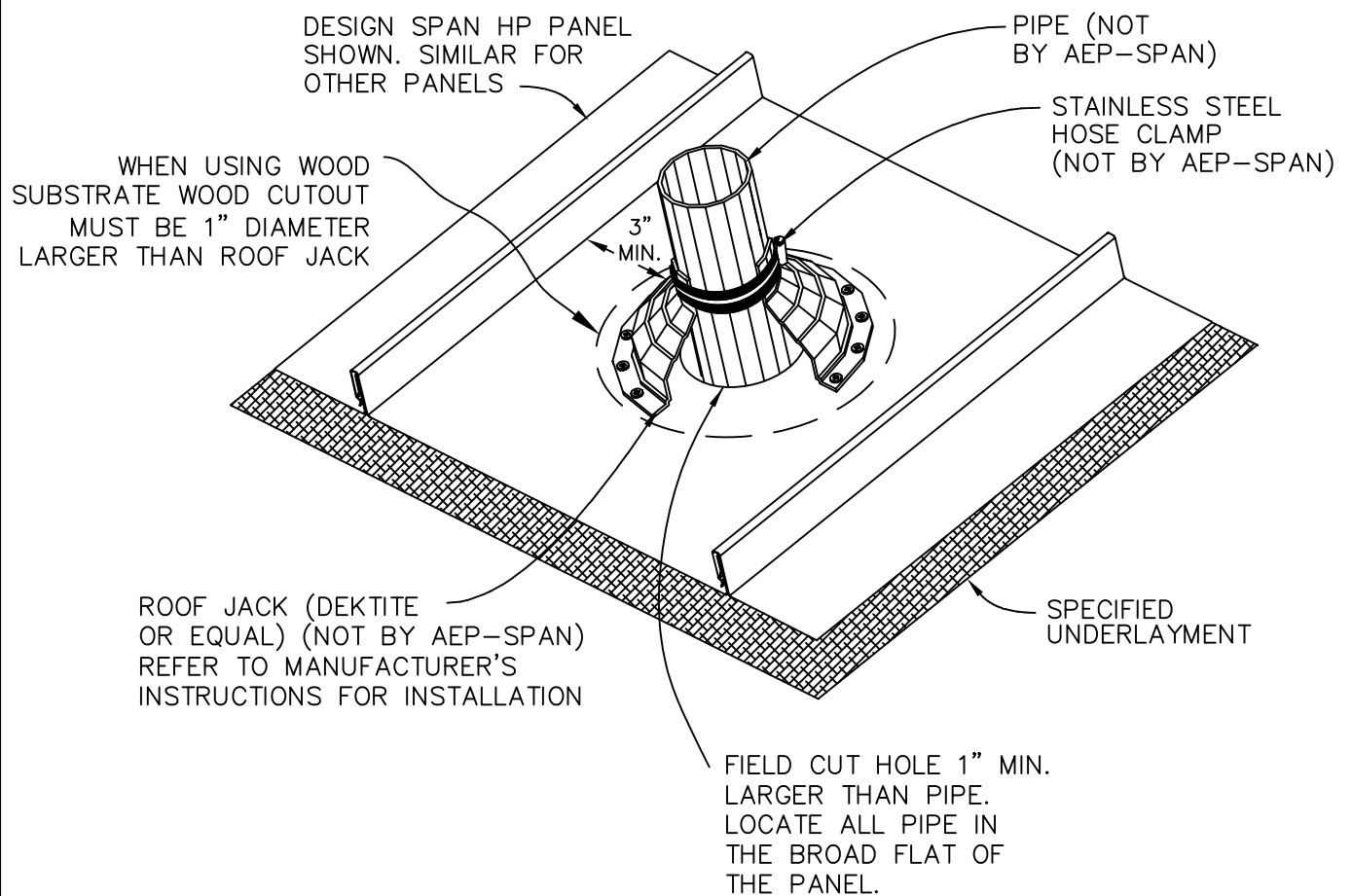
MISC. DETAILS

ROOF CURB - DETAILS

MD-05

NOTES:

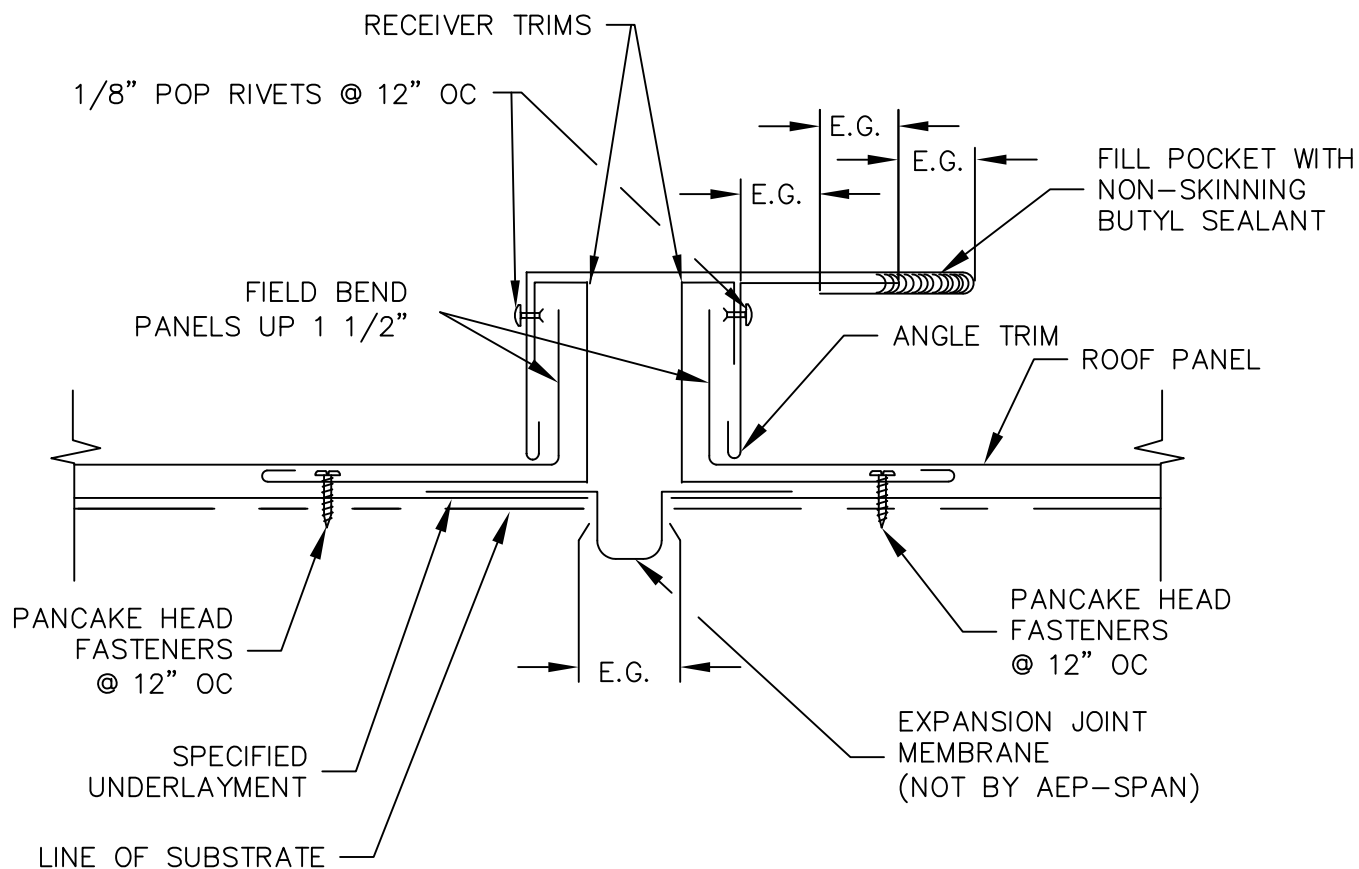
- 1) PENETRATIONS SHOULD BE CENTERED IN PANELS IF AT ALL POSSIBLE.
- 2) SUBSTRATE MUST BE CUT OUT ENOUGH SO THAT DEKTITE IS ONLY ATTACHED TO ROOF PANEL.



MISC. DETAILS

ROOF JACK

MD-06



NOTES:

E.G.=EXPANSION GAP

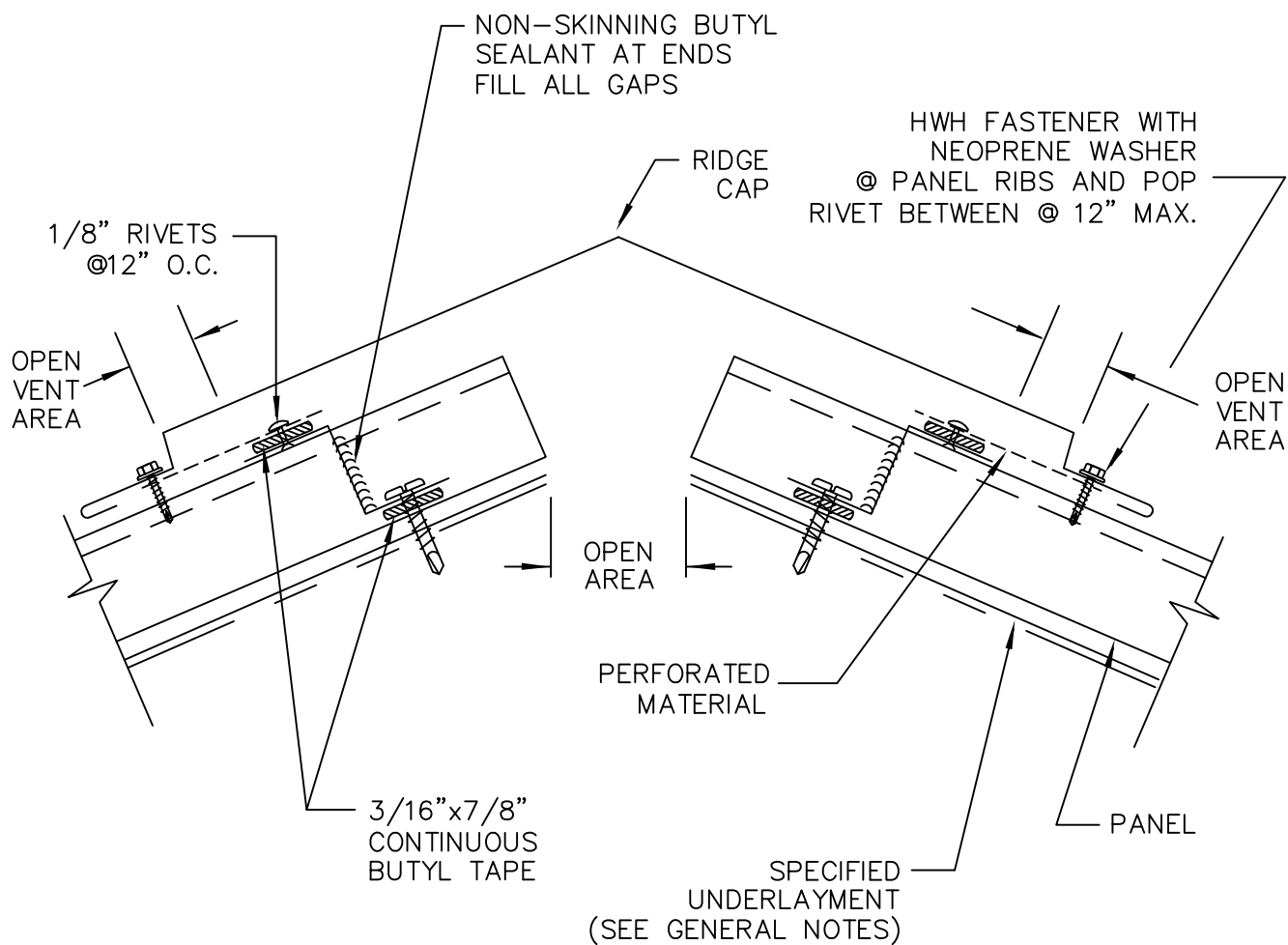
FOR EVEN RIB SPACING PANELS MAY
NEED TO BE CUT AND FIELD BENT
UP 1 1/2" TO FIT INTO RECEIVER
TRIM.



MISC. DETAILS

EXPANSION JOINT

MD-07



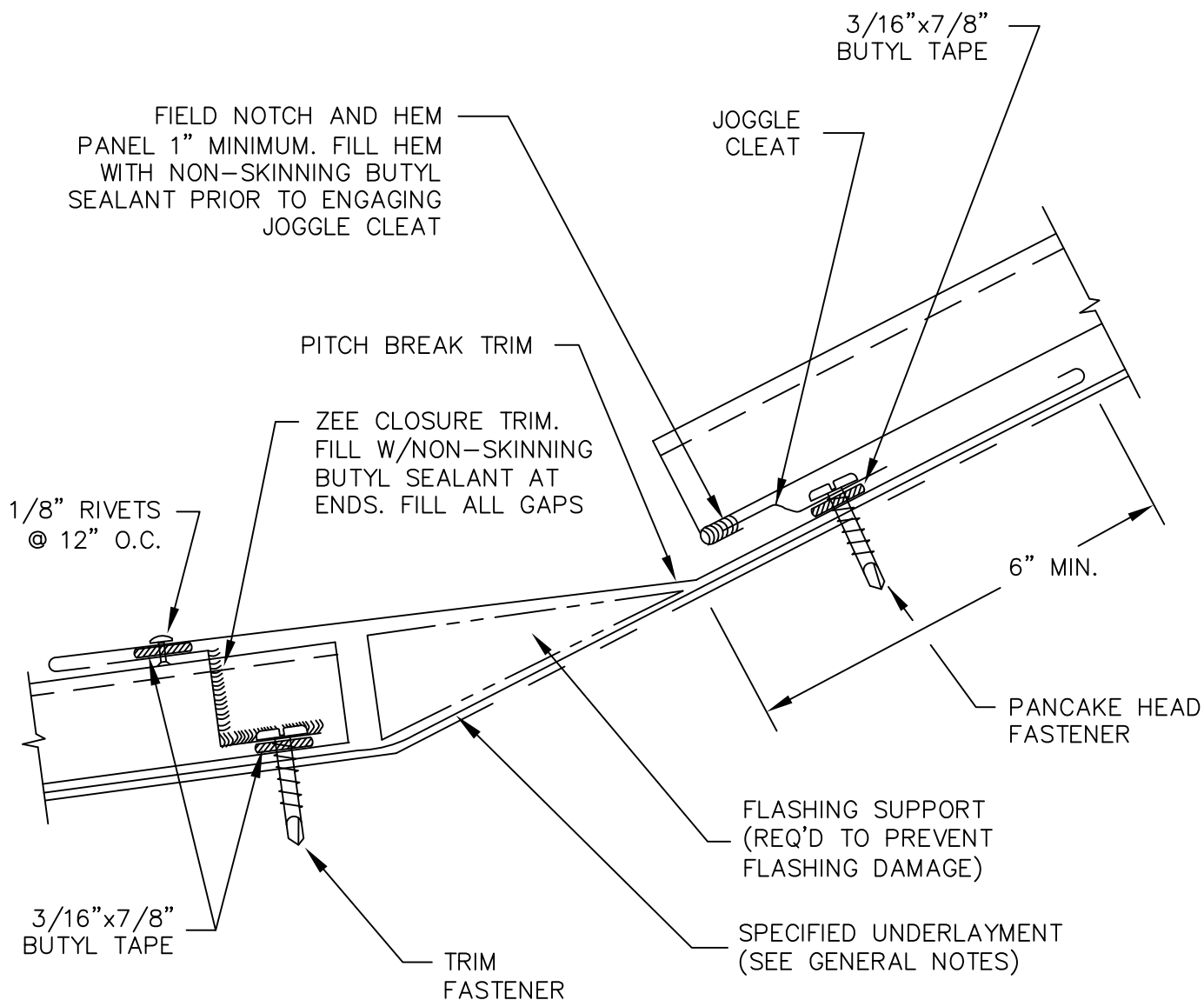
NOTE:
CUSTOMER MUST PROVIDE
VENT AREA REQUIREMENTS



MISC. DETAILS

VENTED RIDGE

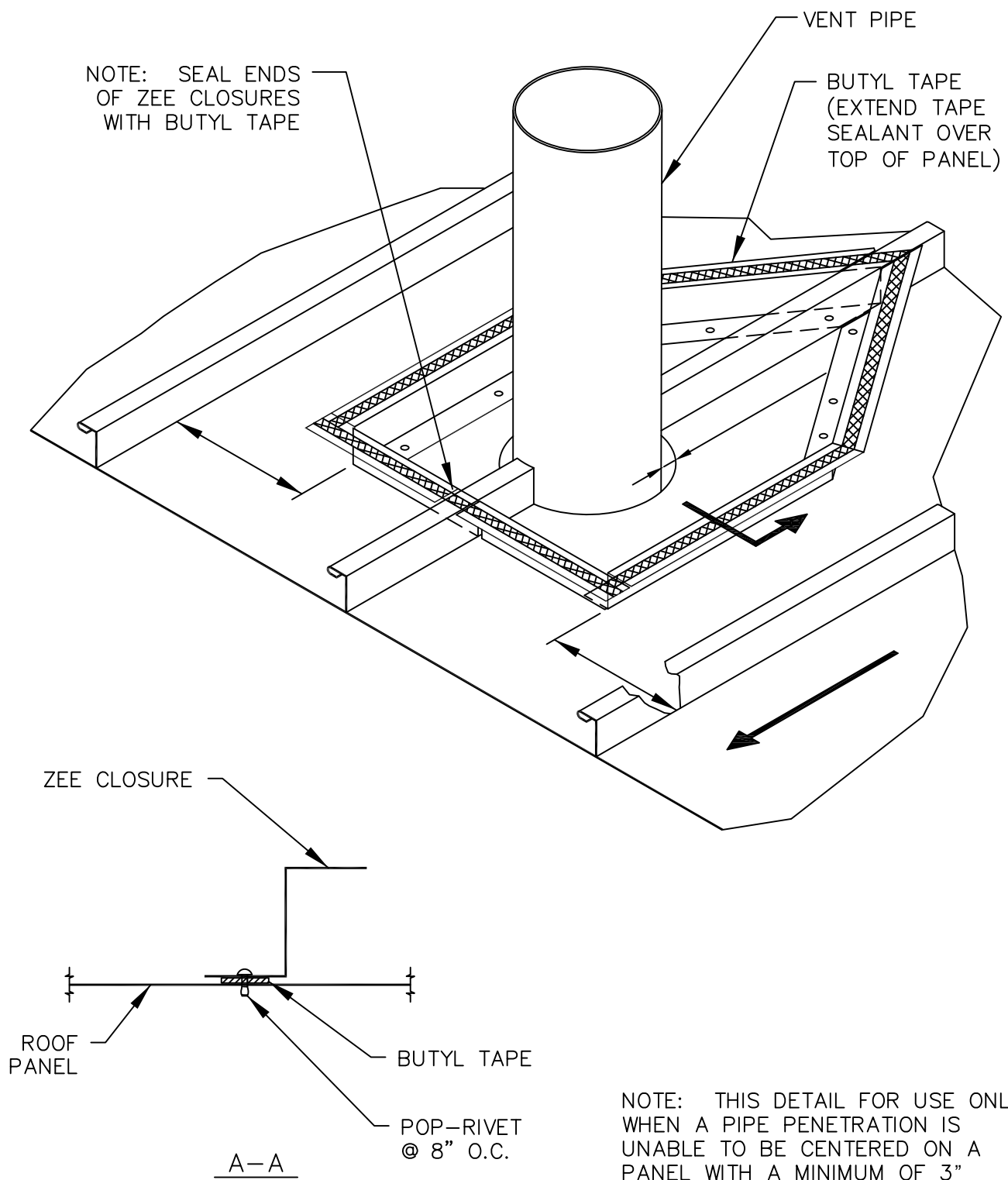
MD-08



MISC. DETAILS

SLOPE TRANSITION
HI-LO

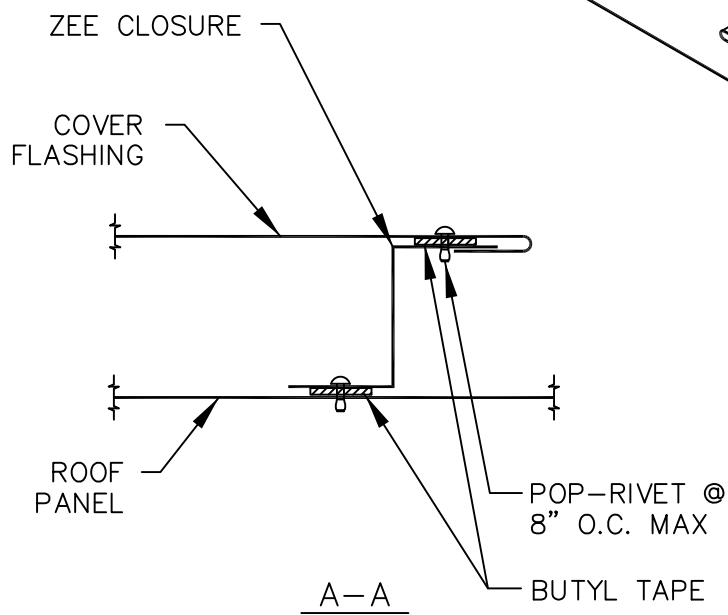
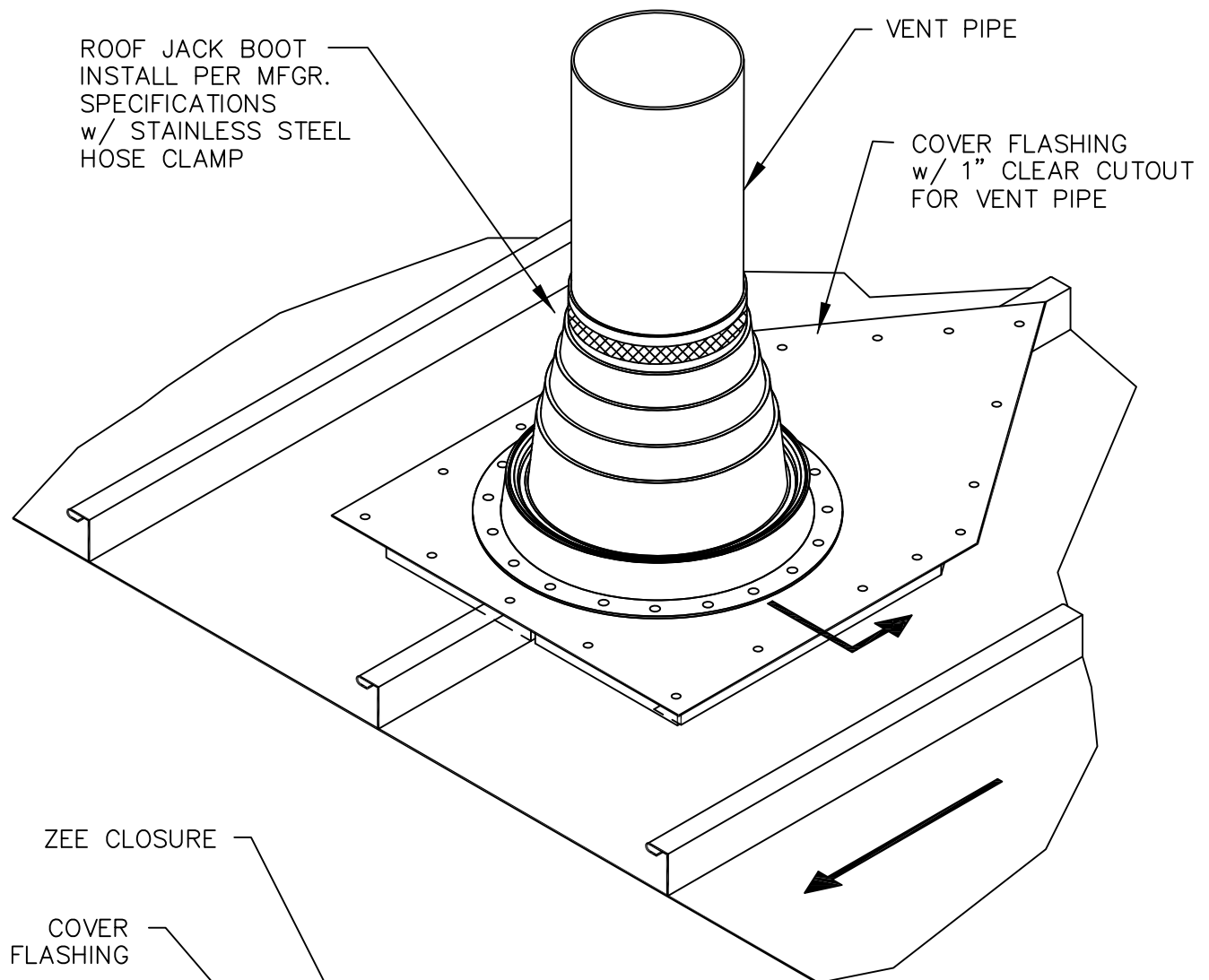
MD-09



MISC. DETAILS

PENETRATION @ RIB
(ZEE CLOSURE INSTALL.)

MD-10



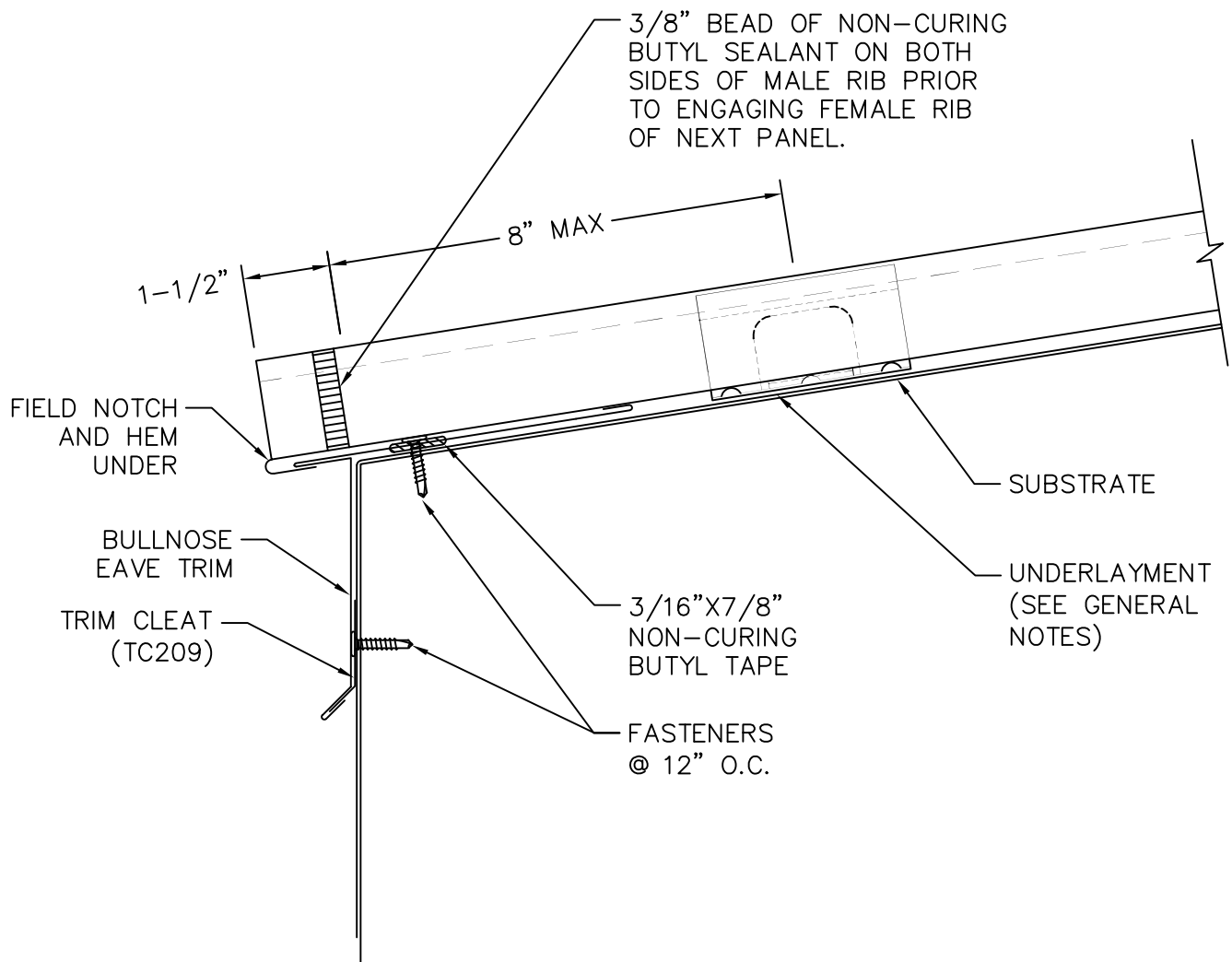
NOTE: THIS DETAIL FOR USE ONLY WHEN A PIPE PENETRATION IS UNABLE TO BE CENTERED ON A PANEL WITH A MINIMUM OF 3" CLEARANCE ON EITHER SIDE.



MISC. DETAILS

PENETRATION @ RIB
(FLASHING INSTALL.)

MD-11

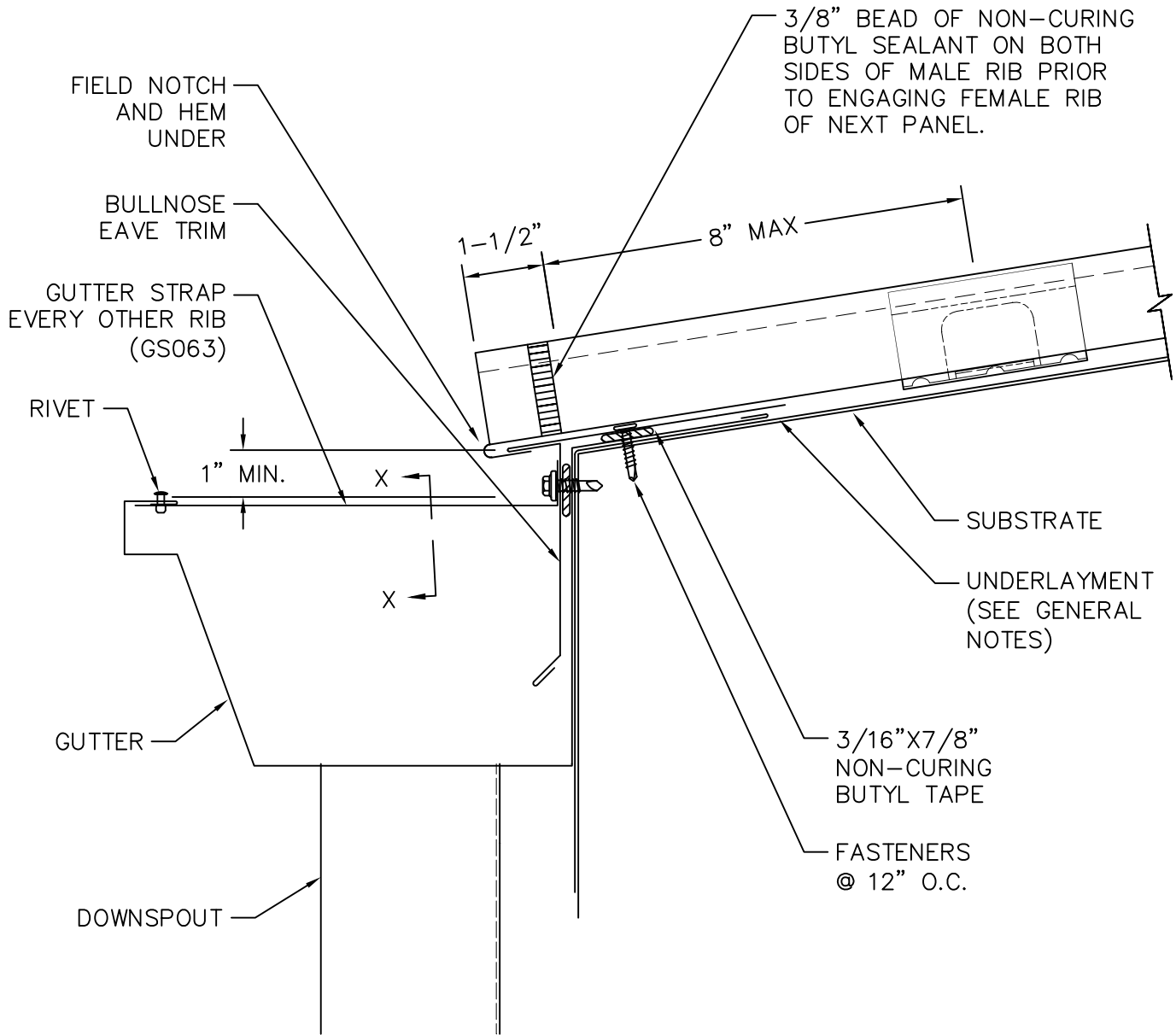


MISC. DETAILS

BULLNOSE EAVE

MD-12

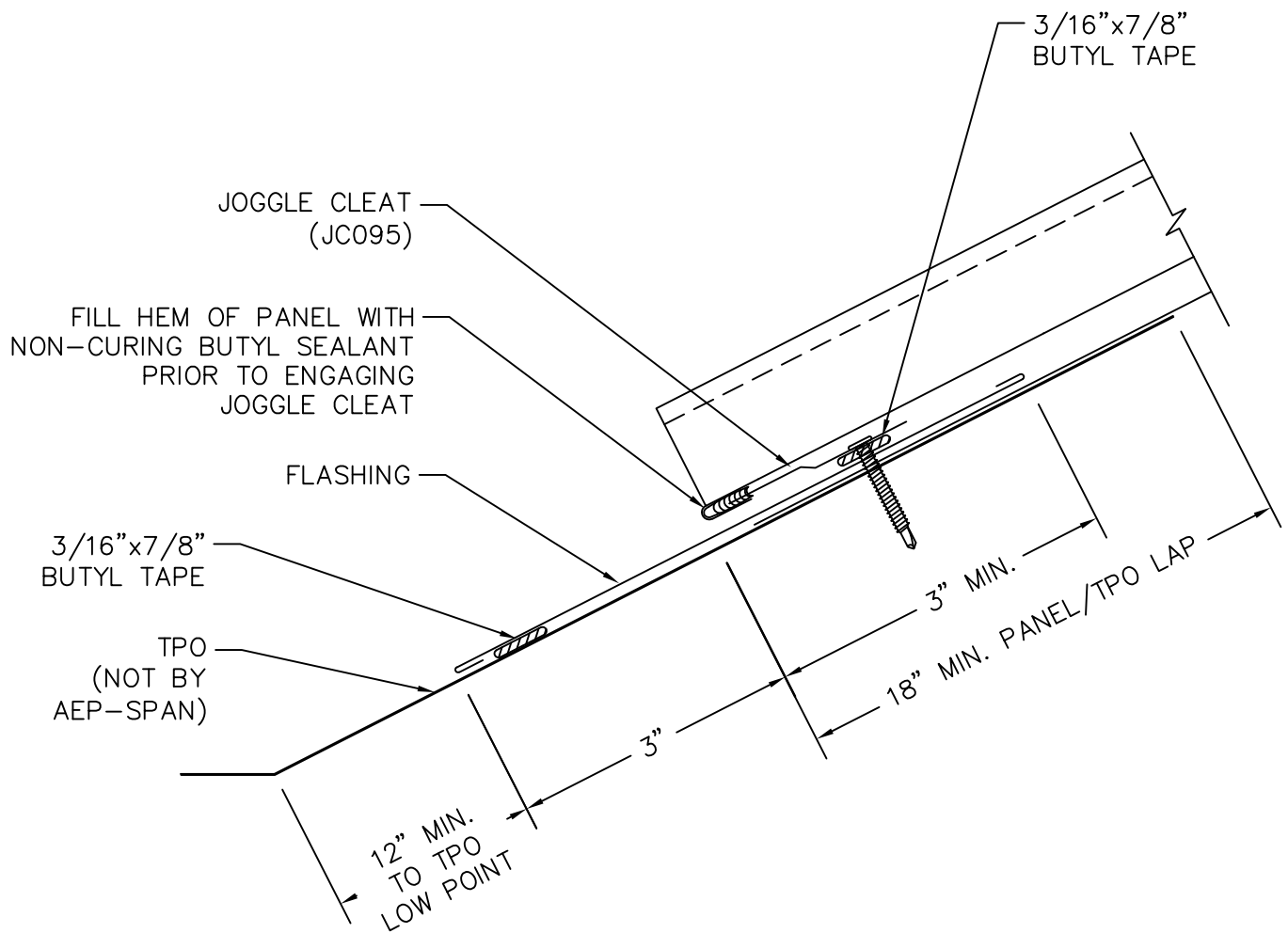
SECTION X-X



MISC. DETAILS

BULLNOSE EAVE W/GUTTER

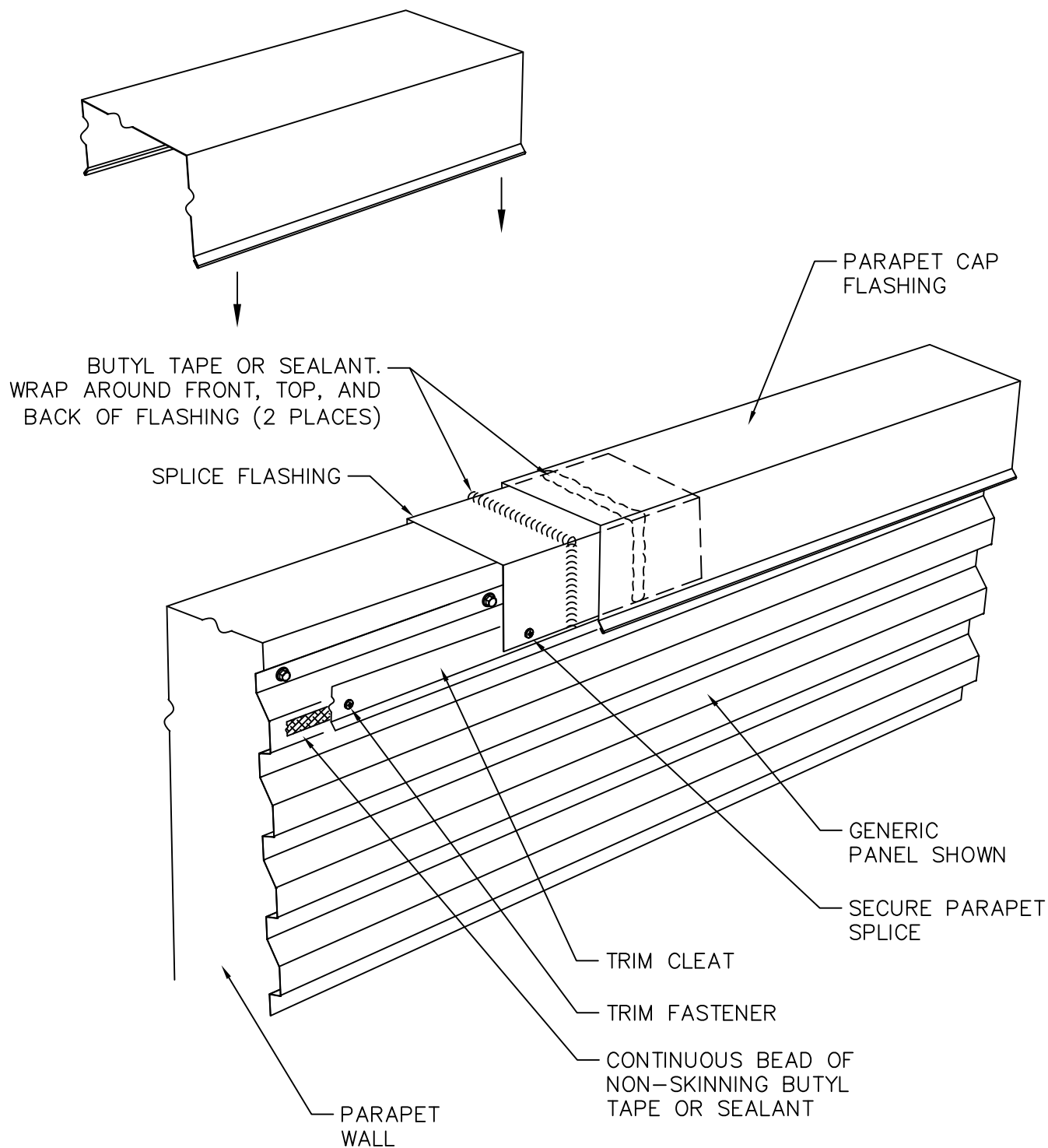
MD-13



MISC. DETAILS

PANEL TO TPO

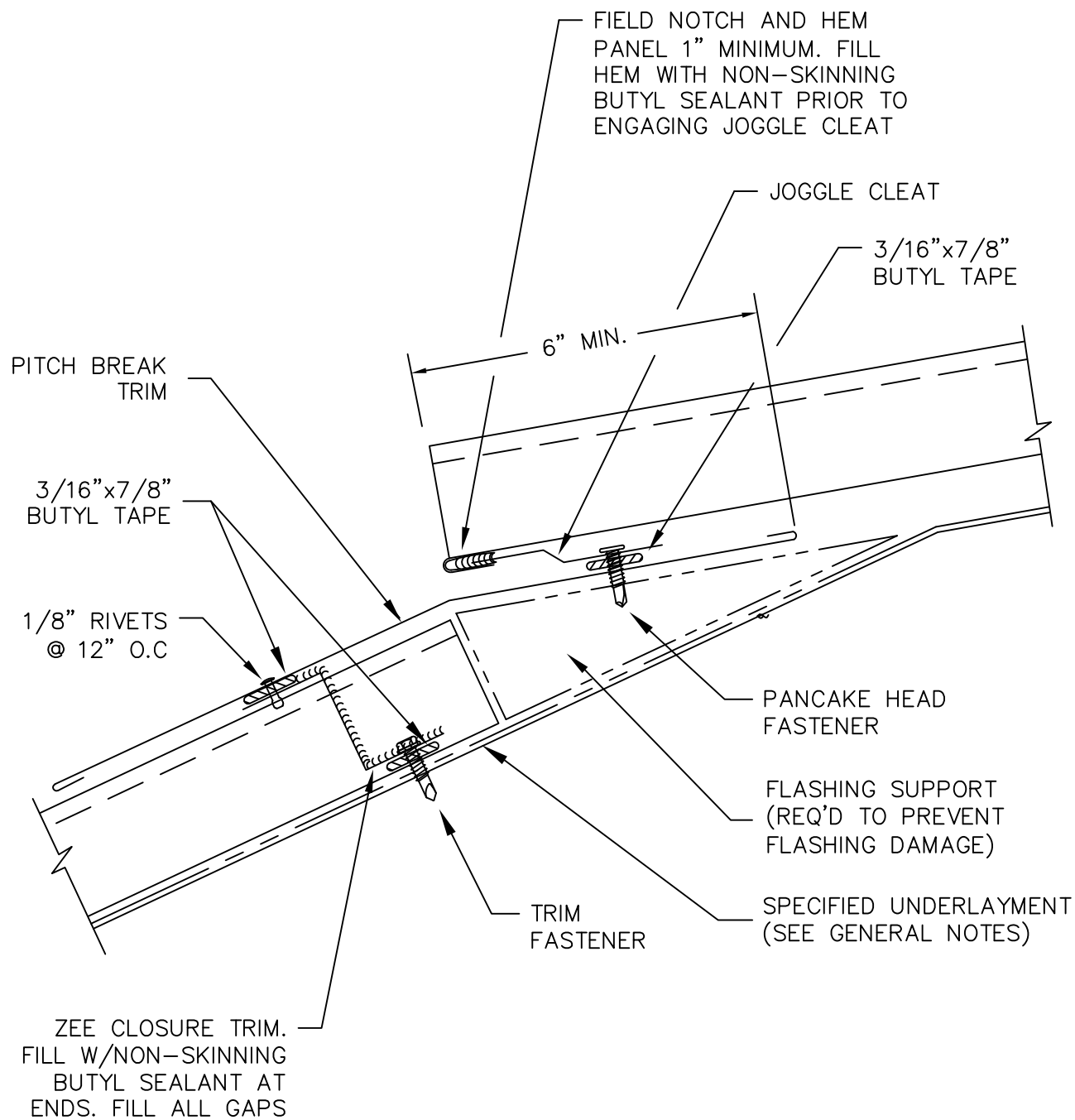
MD-14



MISC. DETAILS

PARAPET CAP SPLICE

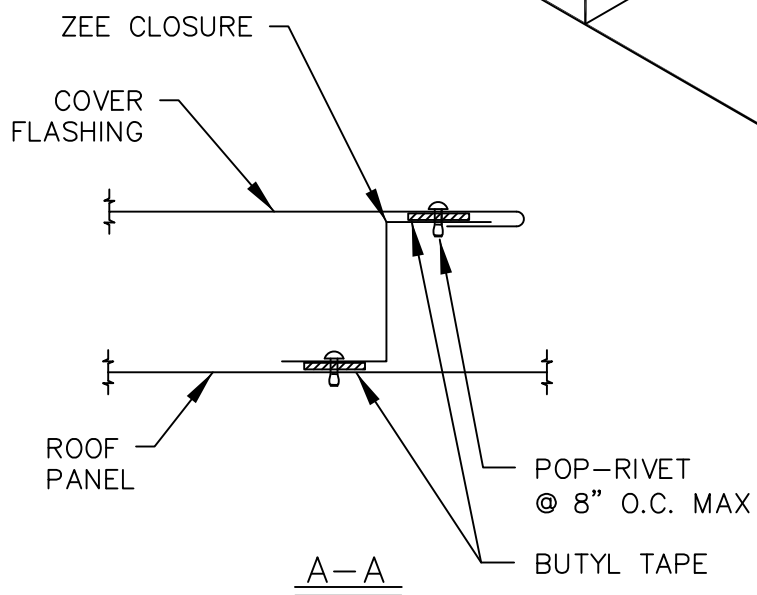
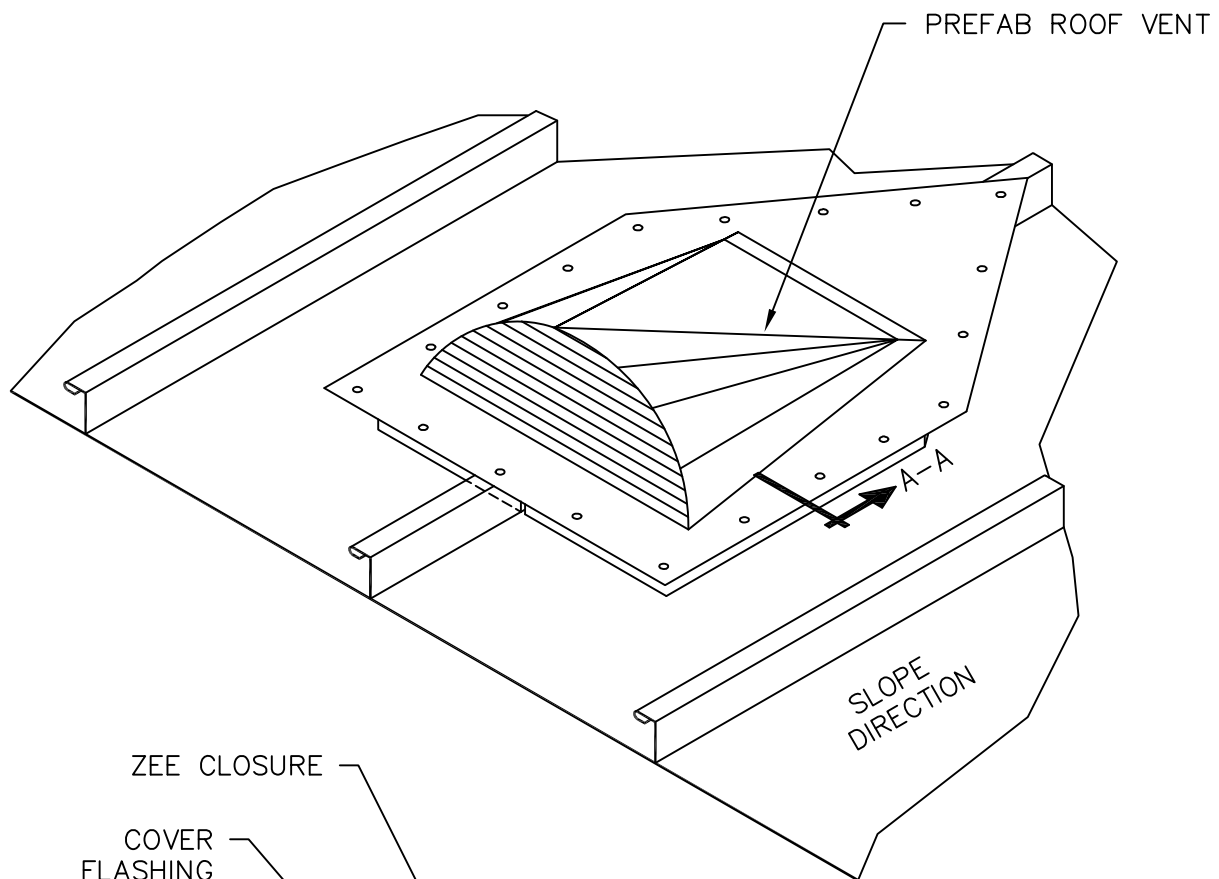
MD-15



MISC. DETAILS

SLOPE TRANSITION
 LO-HI

MD-16



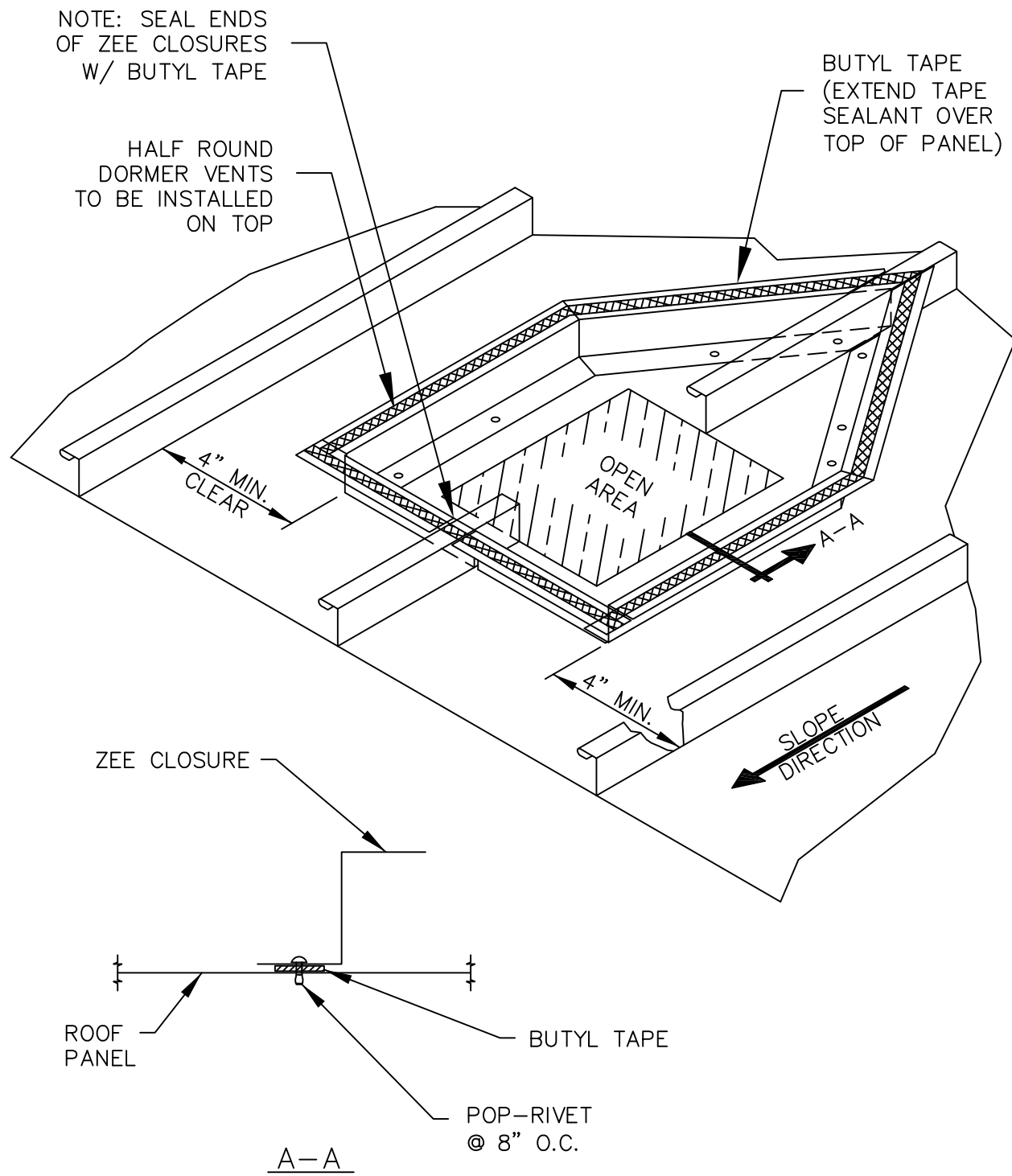
NOTE:
1. CUT PREFAB VENT SKIRT TO FIT



MISC. DETAILS

HALF ROUND ROOF VENT

MD-17



MISC. DETAILS

HALF ROUND ROOF VENT
(ZEE CLOSURE INSTALL)

MD-18

MANUFACTURING FACILITY:

Sacramento, California

2110 Enterprise Boulevard
West Sacramento, CA 95691

Tacoma, Washington

2141 Milwaukee Way
Tacoma, WA 98421

CUSTOMER SERVICE:

800-733-4955

Visit us at:

www.aepspan.com

