



## Select Seam Wall

Installation Guide

# Select Seam

## Wall Installation Guide

### - Table of Contents -

<b>Section</b>	<b>Page</b>
<i>General Notes</i> .....	<i>i</i>
<i>Panel Details</i> .....	<i>1</i>
<i>Panel Clip</i> .....	<i>2</i>
<i>Base</i> .....	<i>3</i>
<i>Sill</i> .....	<i>4</i>
<i>End Wall</i> .....	<i>5</i>
<i>Outside Corner</i> .....	<i>6</i>
<i>Inside Corner</i> .....	<i>7</i>
<i>Soffit (Front)</i> .....	<i>8</i>
<i>Soffit (Back)</i> .....	<i>9</i>
<i>Parapet</i> .....	<i>10</i>
<i>Door/Window (Head)</i> .....	<i>11</i>
<i>Door/Window (Jamb)</i> .....	<i>12</i>
<i>Door/Window (Sill)</i> .....	<i>13</i>
<i>Panel Lap</i> .....	<i>14</i>
<i>Panel Lap (3D)</i> .....	<i>15</i>
<i>Batten Lap</i> .....	<i>16</i>
<i>Hem @ Panel Lap</i> .....	<i>17</i>
<i>Zee Closure Detail</i> .....	<i>18</i>
<i>Penetrations, Small</i> .....	<i>19</i>
<i>Penetration, Large</i> .....	<i>20</i>

## General Notes

The attached installation details are intended to be a design aid and do not depict all situations. Modifications are the responsibility of the designer/user and should take into account climate conditions such as wind and snow, governing code requirements, and the actual usage and maintenance of the structure.

### Applications:

Select Seam can be utilized as a wall panel installed in the vertical orientation. It must be installed over a solid substrate.

### Flashings:

Where possible, flashings should be lapped away from prevailing winds. Certain flashings should be supported if it is likely that equipment (ladder, etc.) will be used against them. Check with AEP Span any time you intend to specify a prefinished flashing in a gauge or finish different than with the Select Seam wall panels. It is good practice to specify that all flashings be of the same material (gauge, color, finish) as the wall panels to ensure long-term durability. Field-painted flashings rarely equal the durability and colorfastness of factory baked-on paint systems. The enclosed details have minimized the use of exposed fasteners where possible. The edges of flashings have also been shown hemmed to strengthen and to minimize the exposure of cut edges.

Flashing design and fabrication is generally the responsibility of the contractor. For convenience, we have provided some typical flashing drawings on our website at <https://www.aepspan.com/products/trims-flashings>. Applicable Select Seam flashing part numbers are referenced within this installation guide. Note that flashing shapes and dimensions may vary greatly based on project requirements. Installation details and flashings referenced within are for general design guidance only.

### Condensation, Insulation, & Ventilation:

It is the designer's responsibility to determine the need and composition of condensation control materials including insulation and vapor retarders, as well as ventilation requirements. Metal wall products are susceptible to condensation and its control should be carefully considered.

### Thermal Movement:

Both panels and flashings must allow for thermal movement (expansion and contraction) of the materials, especially where long lengths are used. Appropriate gaps or provisions must be provided to accommodate thermal movement.

### Oil Canning:

Flat metal surfaces often display waviness commonly referred to as 'oil canning'. This can be caused by variations in raw material, processing variations, product handling, or variations in the installation substrate. Oil canning is a characteristic, not a defect, of panels manufactured from light-gauge metal. To reduce potential for oil canning, substrates should not deviate from a flat plane more than 1/4 inch in 20 feet, or 1/8 inch in 5 feet. Oil canning is not a cause for panel rejection. Additional technical information is available upon request.

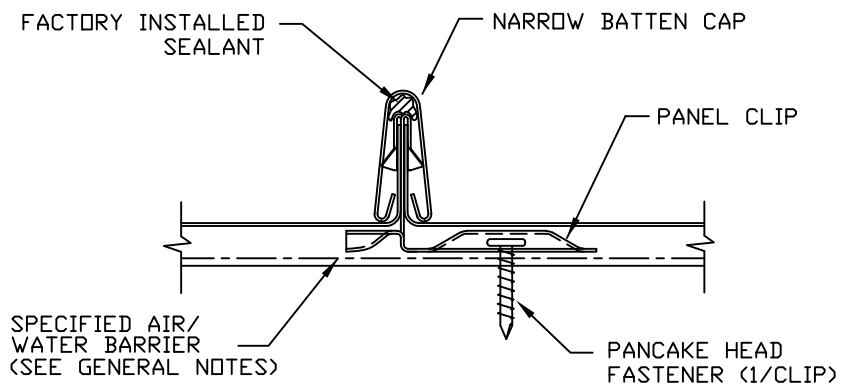
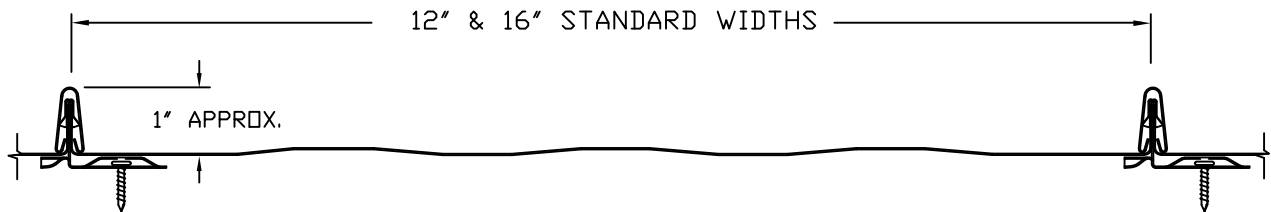
### References:

The Sheet Metal and Air Conditioning Contractors' National Association Inc. (SMACNA) manual is an excellent reference for installers. It's guidelines for underlayments, gutter and downspout size requirements, and expansion/contraction of metals and flashing joints should be followed.

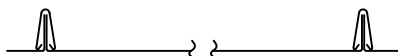
### Technical Assistance:

Contact your AEP Span Sales Representative for additional information.



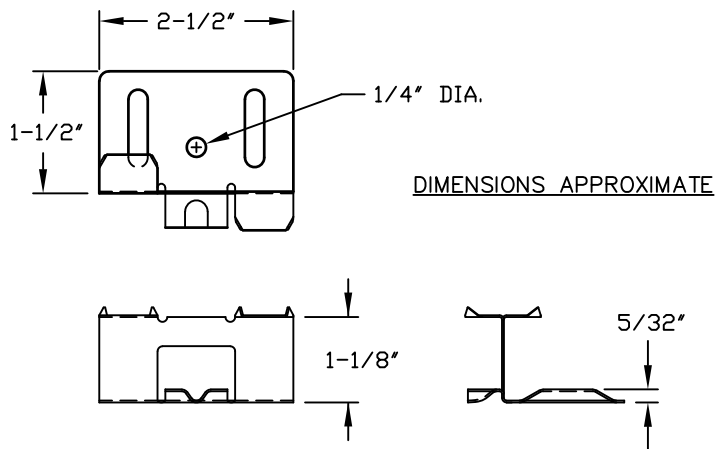
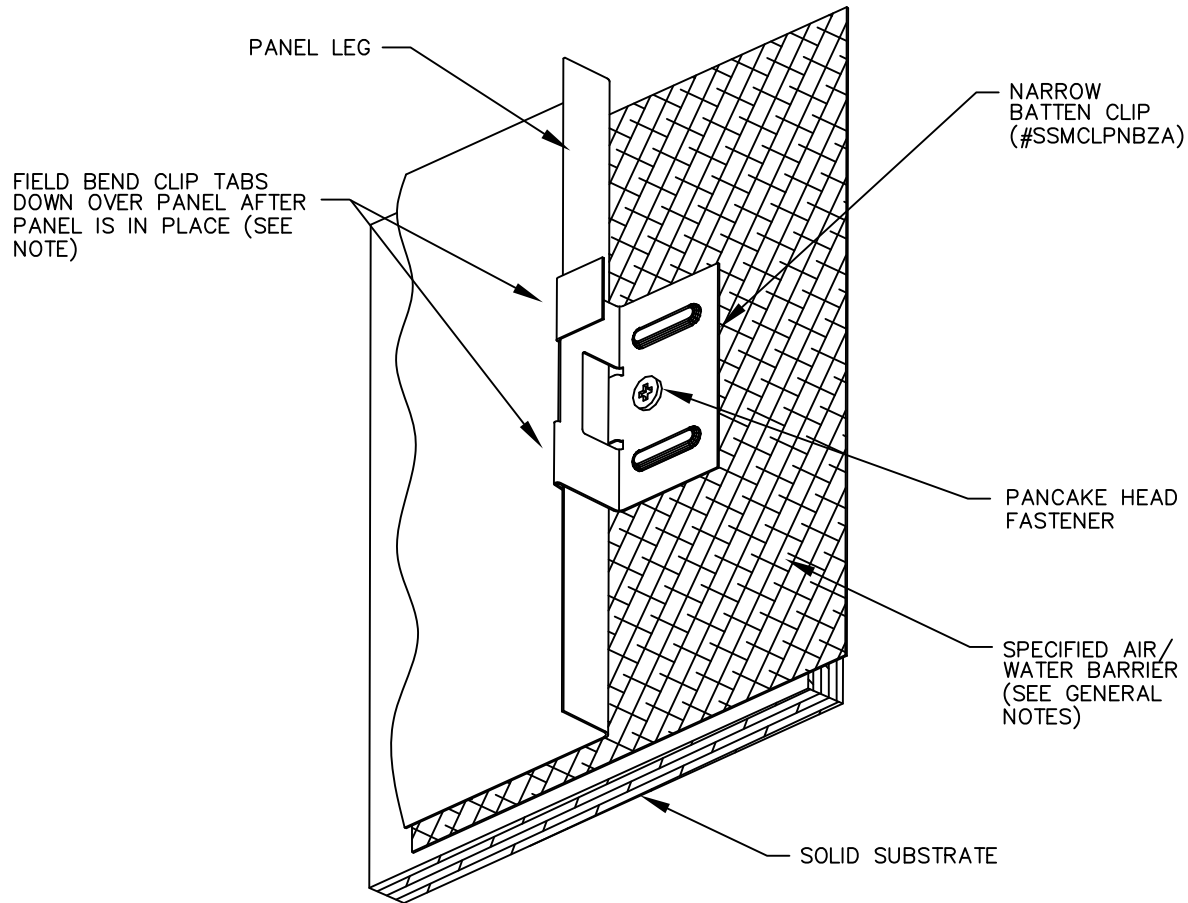


**SELECT SEAM  
WALL**



**PANEL DETAILS**

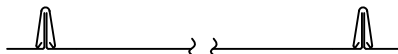
**SSMW-01**



**NOTE:**  
 IF IT IS NECESSARY TO RAISE THE TABS OF A CLIP UP AFTER THEY HAVE BENT DOWN INTO PLACE, THE CLIP MUST BE REPLACED TO PREVENT CLIP FAILURE

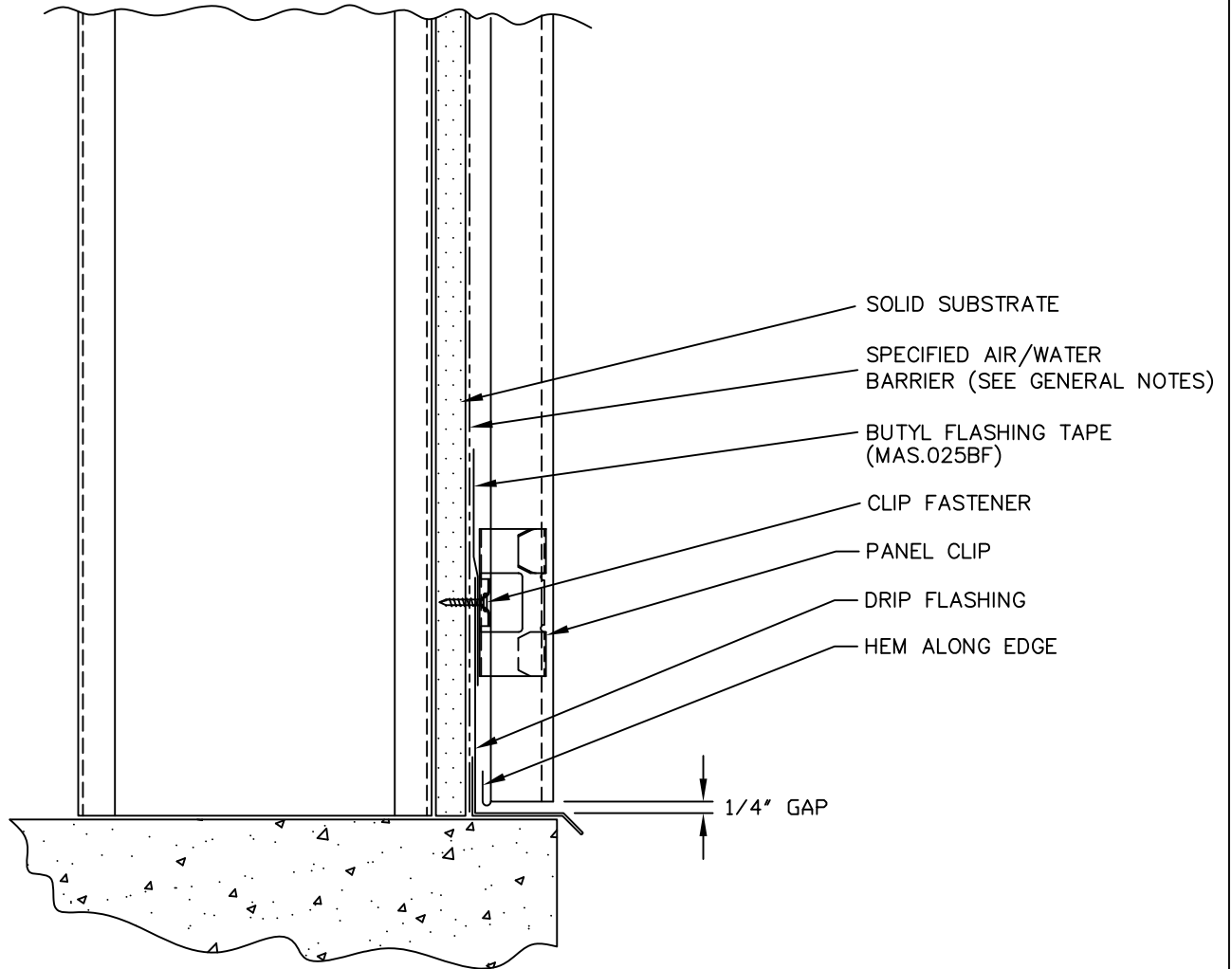
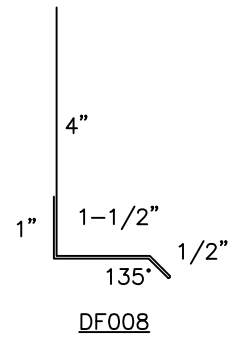


**SELECT SEAM WALL**

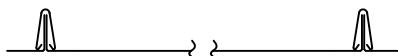


**PANEL CLIP**

**SSMW-02**

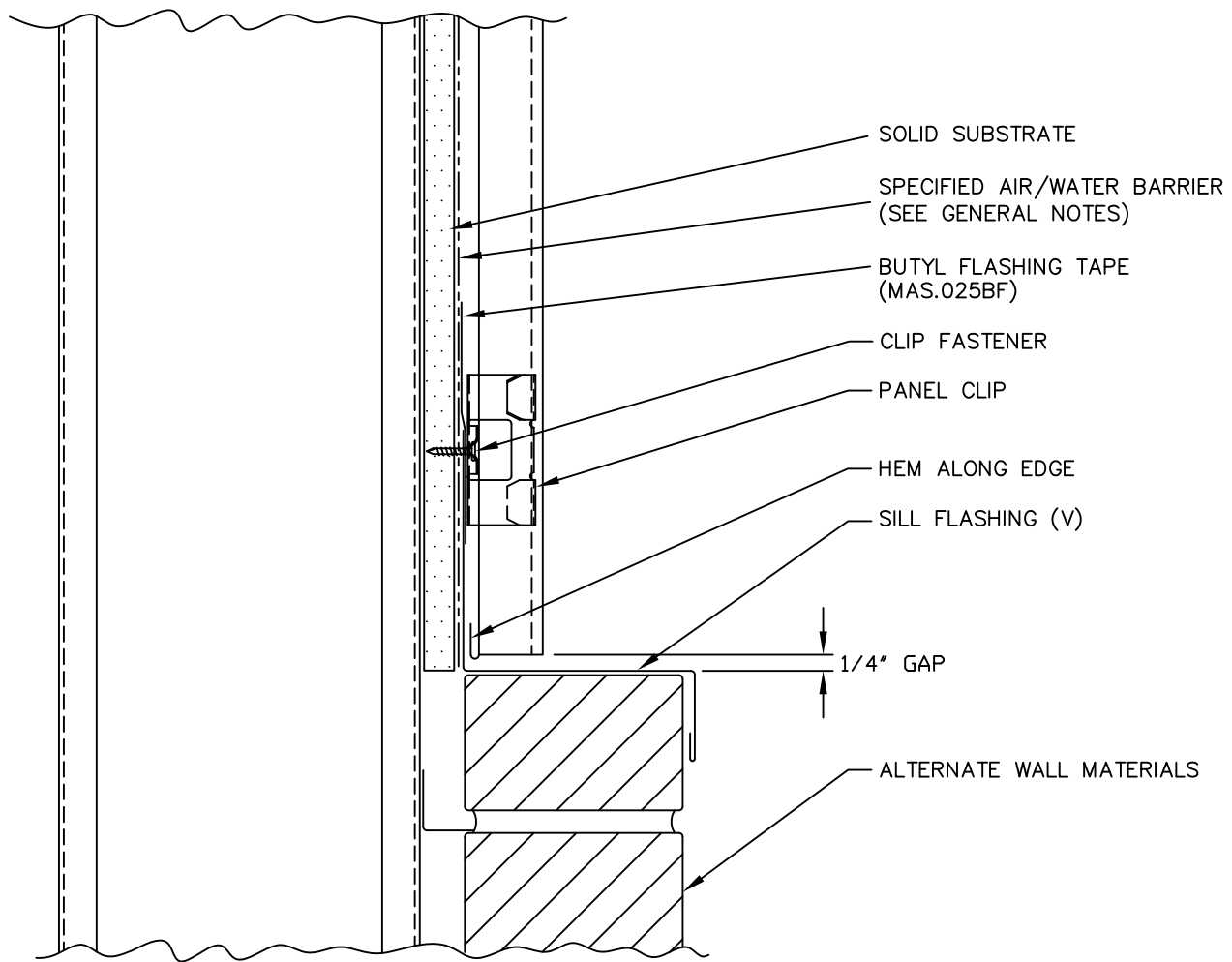


**SELECT SEAM  
WALL**



BASE

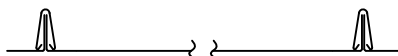
SSMW-03



(V) – CUSTOM FLASHING. DIMS VARY  
 BASED ON PROJECT CONDITIONS

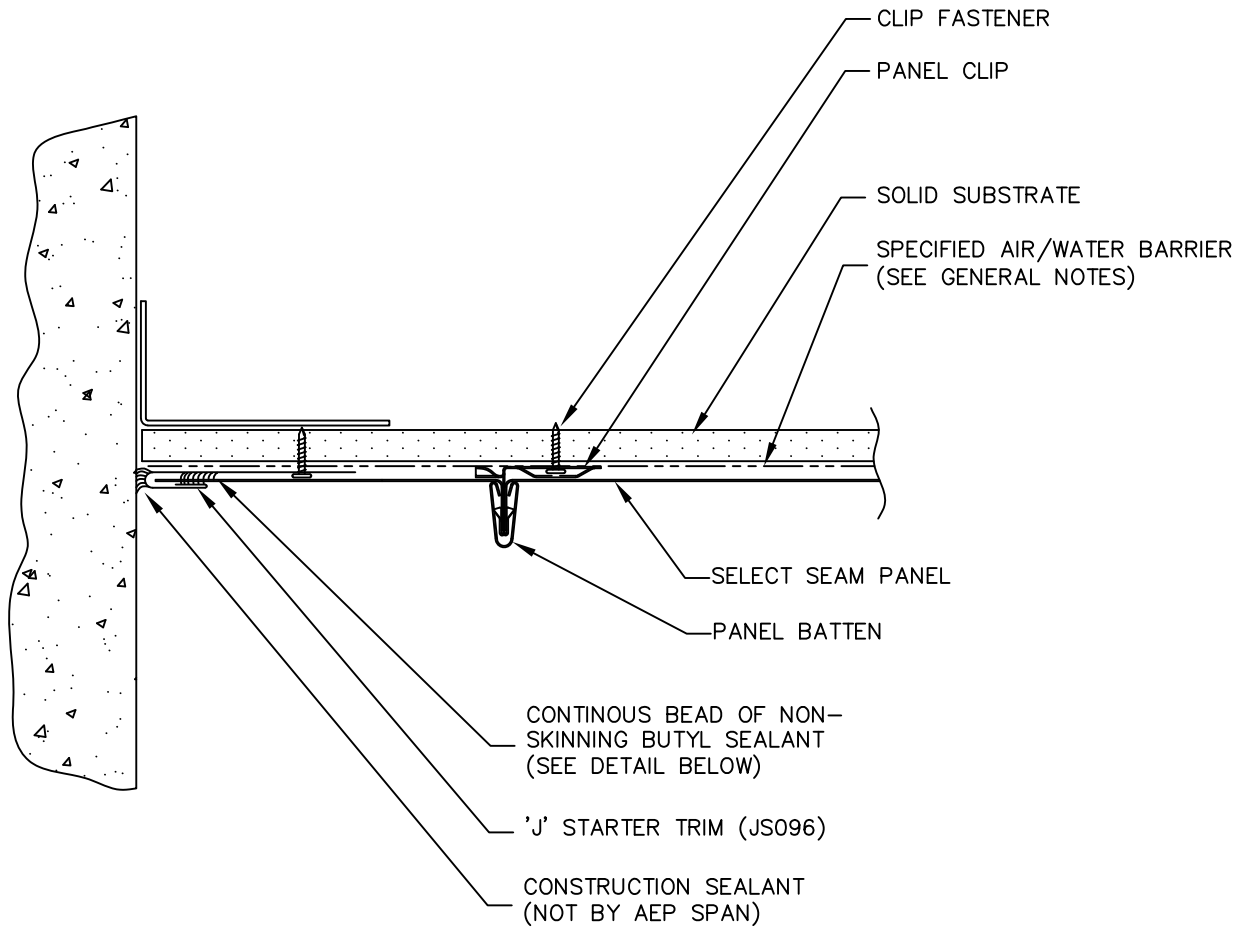
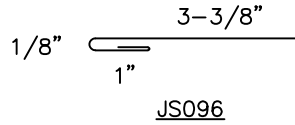


**SELECT SEAM  
 WALL**

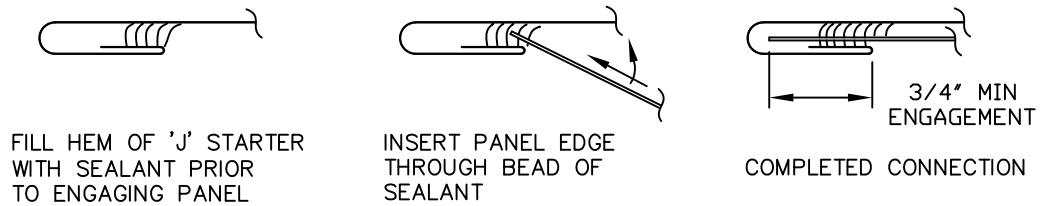


**SILL**

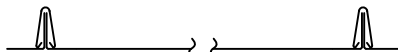
**SSMW-04**



PROPER INSTALLATION OF SEALANT & PANEL



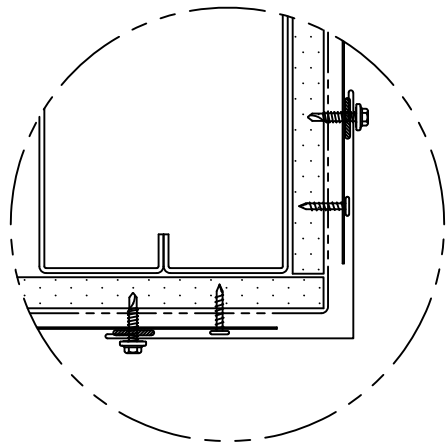
**SELECT SEAM  
WALL**



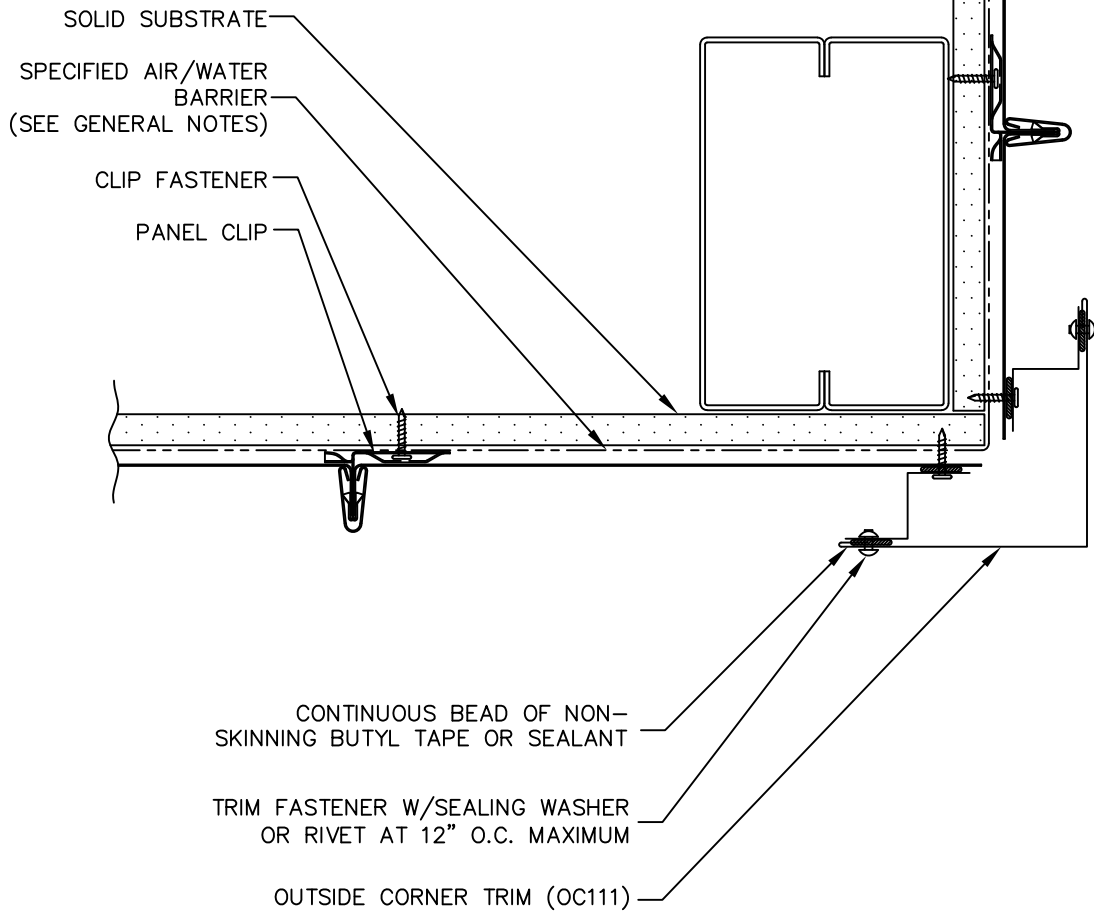
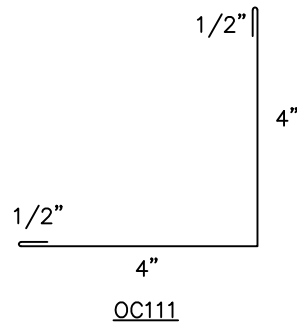
**END WALL**

**SSMW-05**

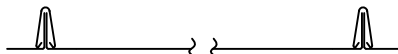




ALTERNATE DETAIL

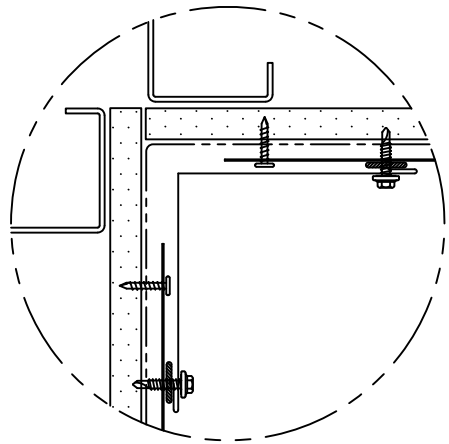
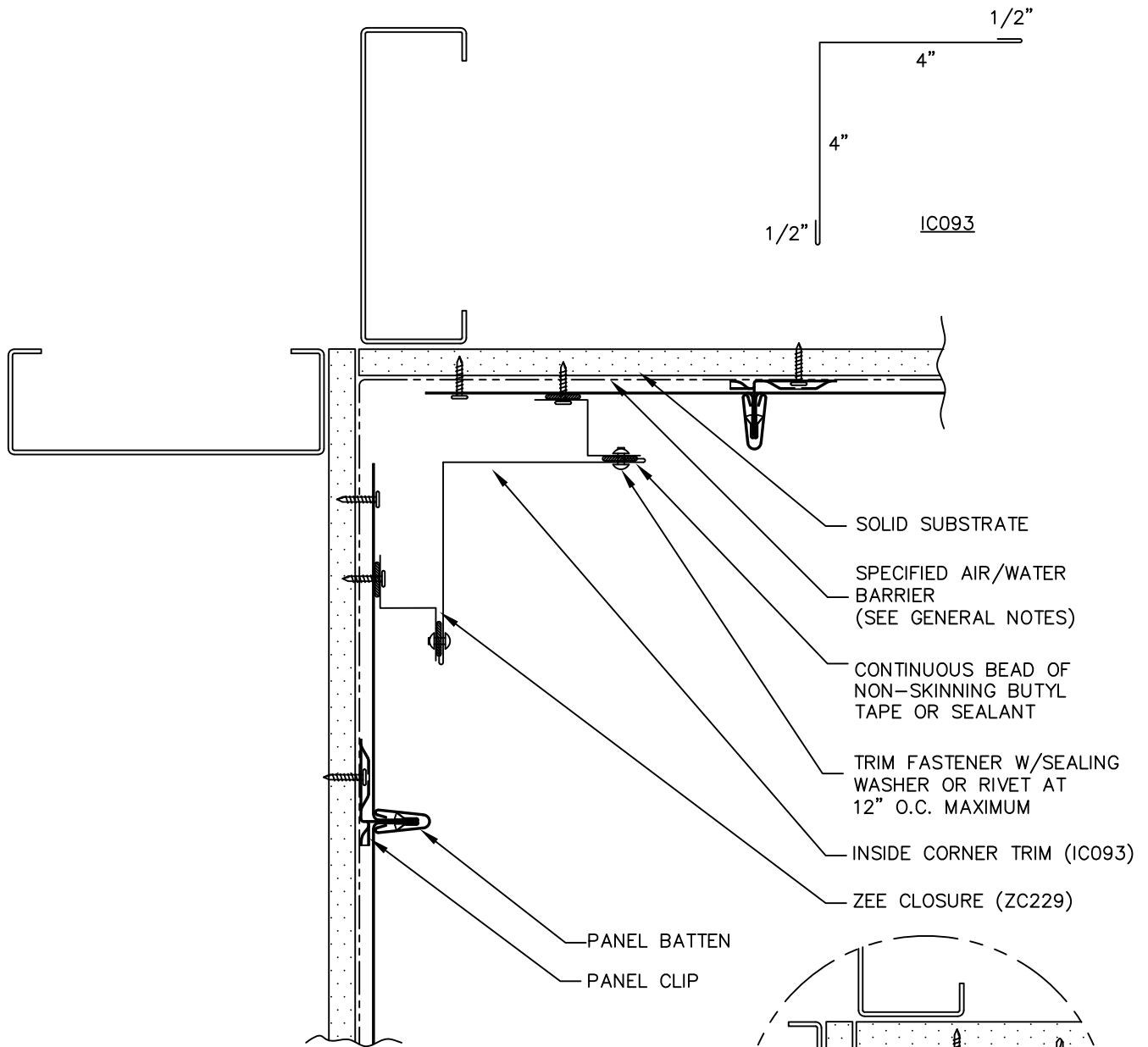


SELECT SEAM WALL



OUTSIDE CORNER

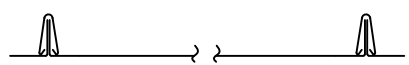
SSMW-06



ALTERNATE DETAIL

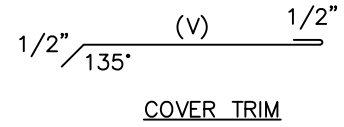
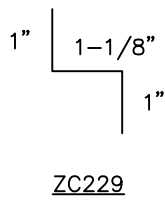
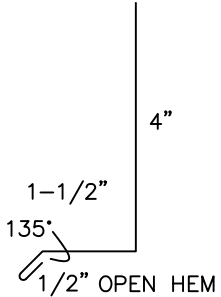


**SELECT SEAM WALL**

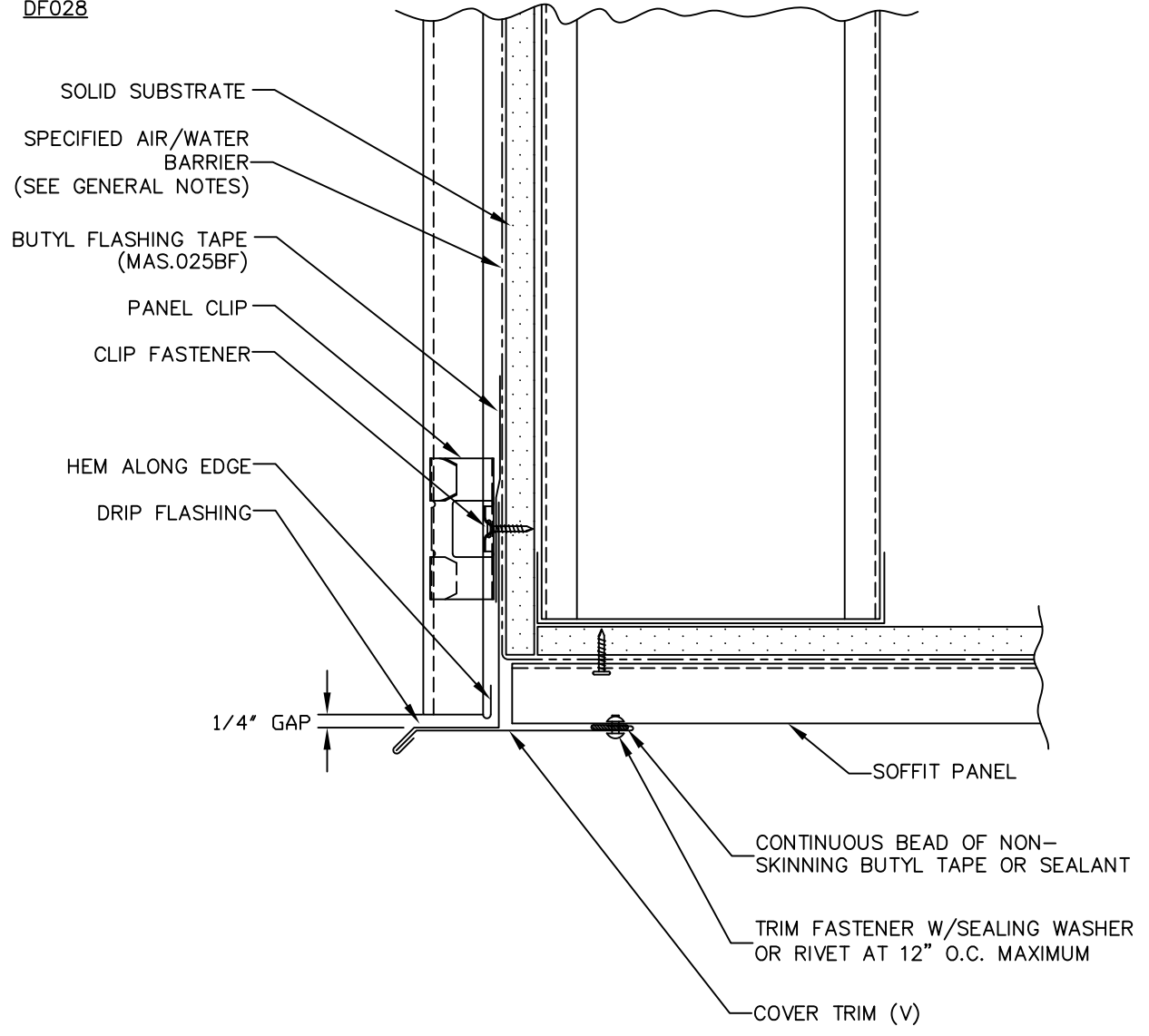


**INSIDE CORNER**

SSMW-07



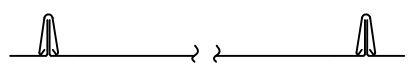
DF028



(V) - CUSTOM FLASHING. DIMS VARY  
BASED ON PROJECT CONDITIONS

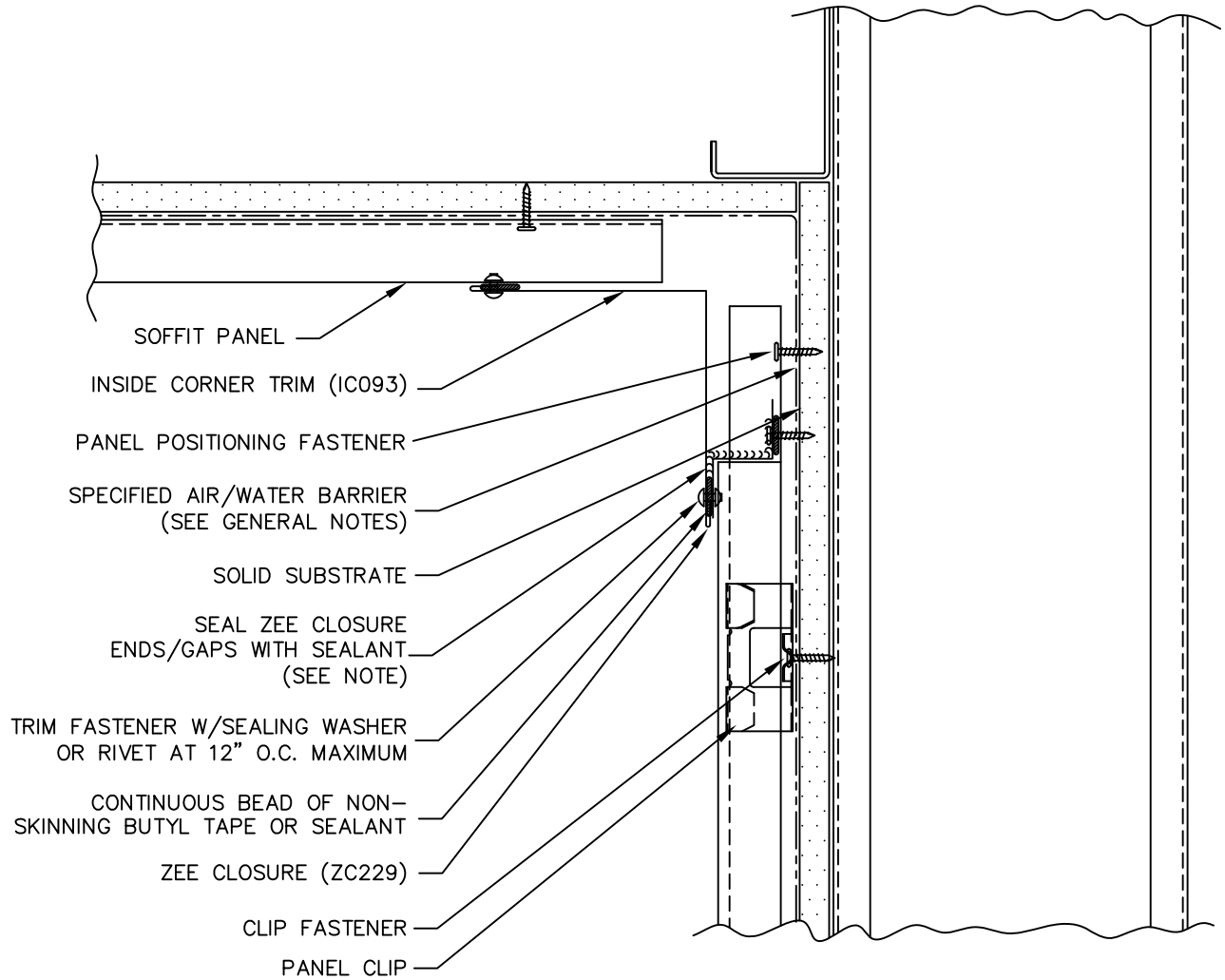
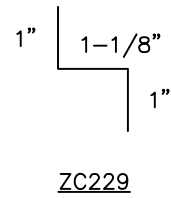
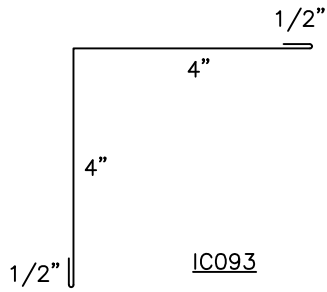


**SELECT SEAM WALL**



SOFFIT (FRONT)

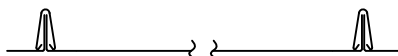
SSMW-08



NOTE:  
 - SEE DETAIL SSMW-18 FOR ZEE DETAIL

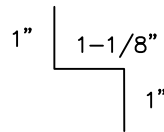


**SELECT SEAM  
 WALL**

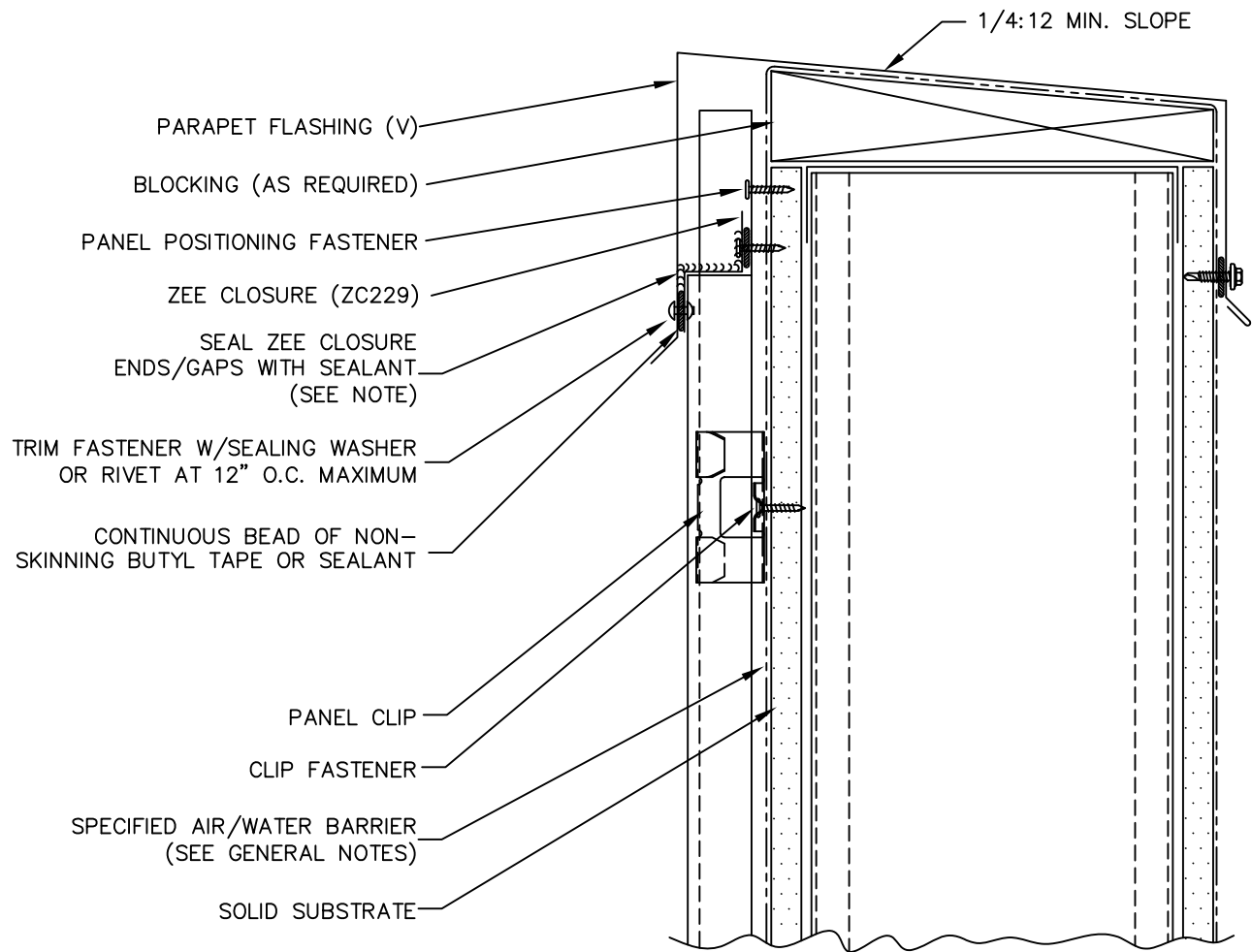


SOFFIT (BACK)

SSMW-09



ZC229

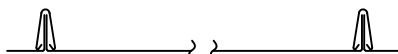


NOTES:

- (V) = CUSTOM FLASHING. DIMS VARY BASED ON PROJECT CONDITIONS
- SEE DETAIL SSMW-18 FOR ZEE DETAIL

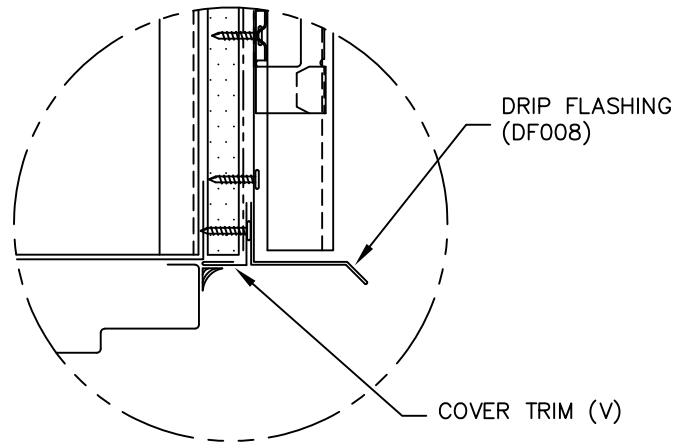
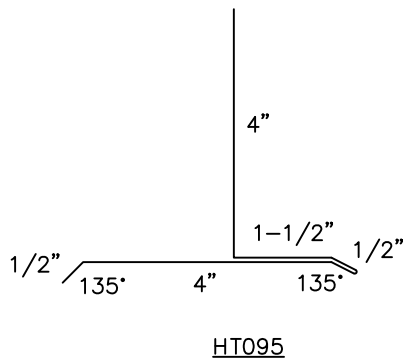


**SELECT SEAM WALL**

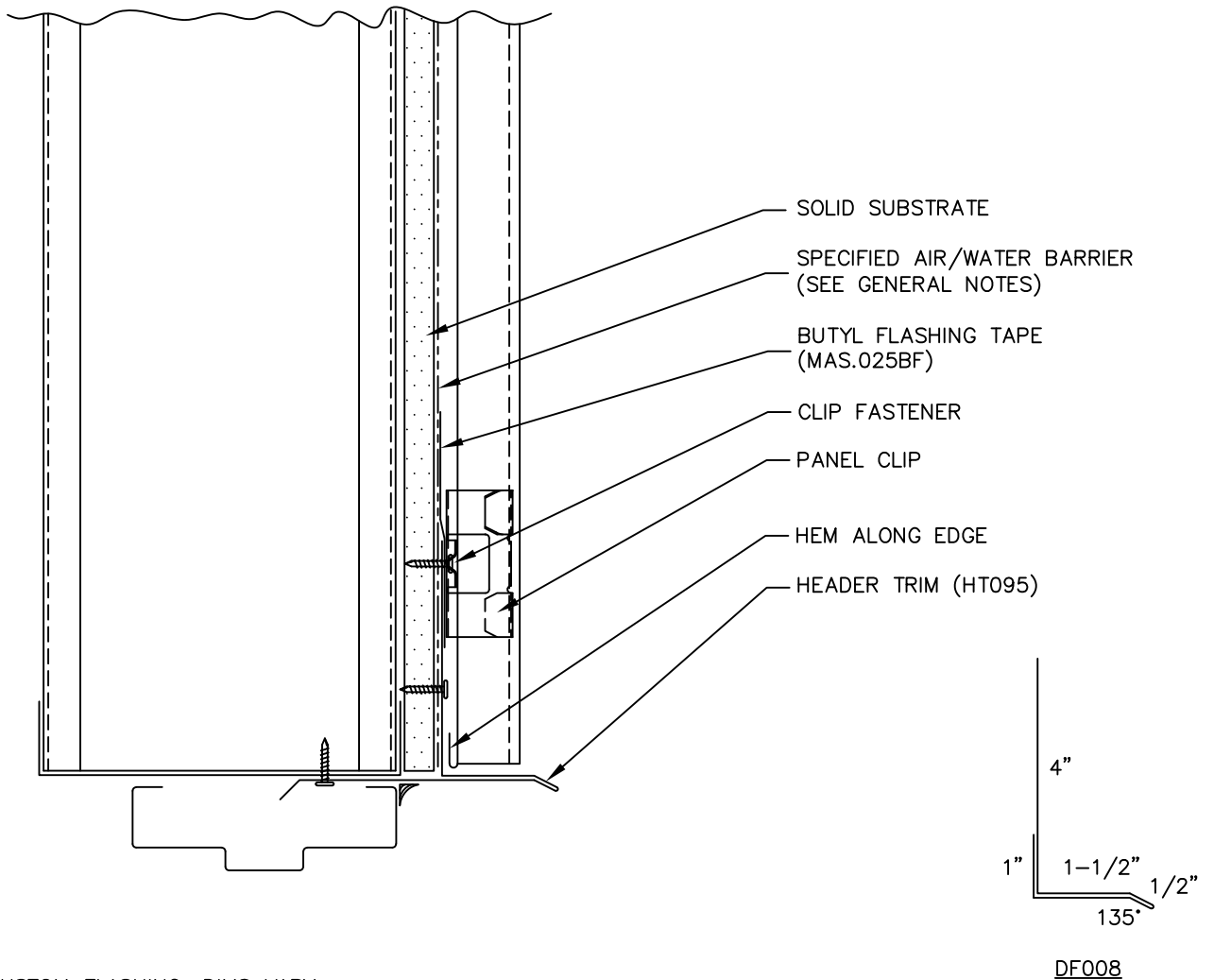


**PARAPET**

**SSMW-10**



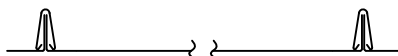
ALTERNATE DETAIL



(V) - CUSTOM FLASHING. DIMS VARY  
BASED ON PROJECT CONDITIONS

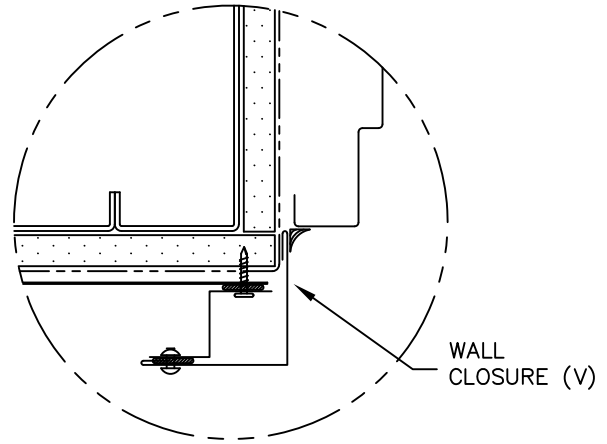
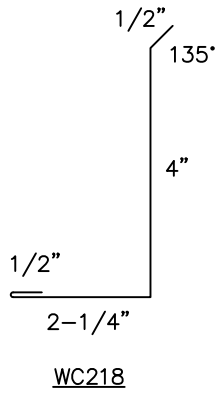


SELECT SEAM  
WALL

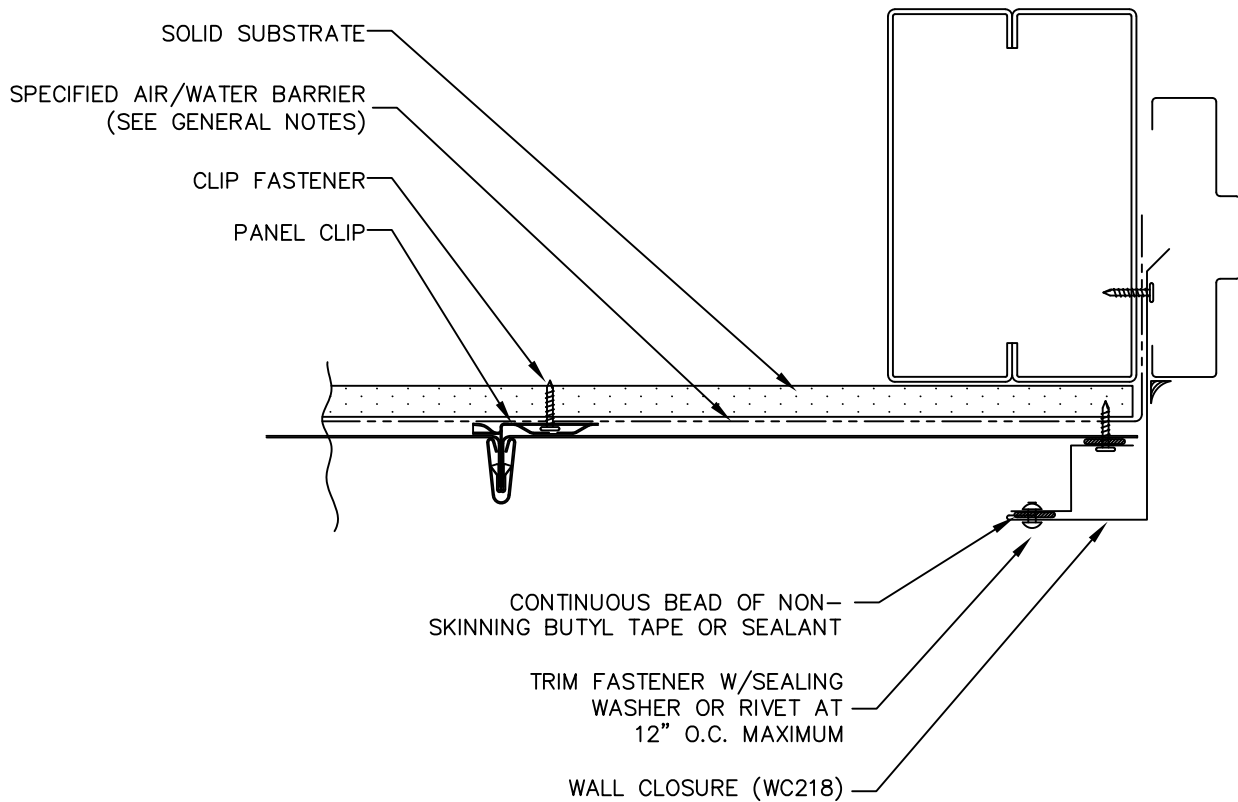


DOOR / WINDOW  
(HEAD)

SSMW-11



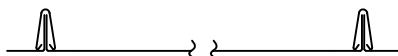
ALTERNATE DETAIL



(V) - CUSTOM FLASHING. DIMS VARY  
BASED ON PROJECT CONDITIONS

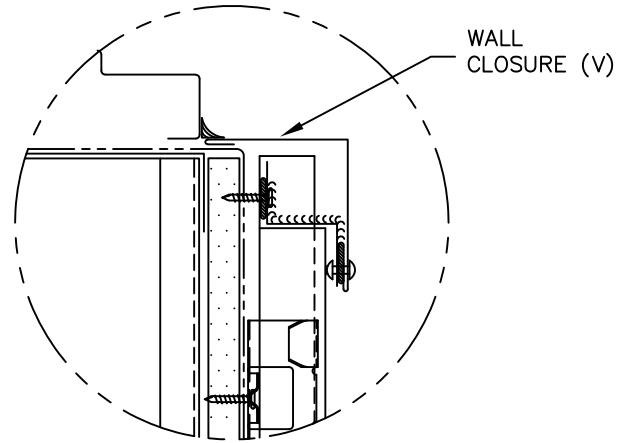
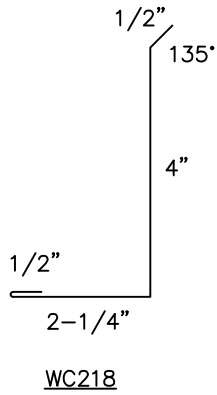


**SELECT SEAM**  
WALL

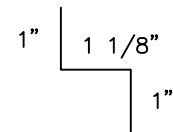
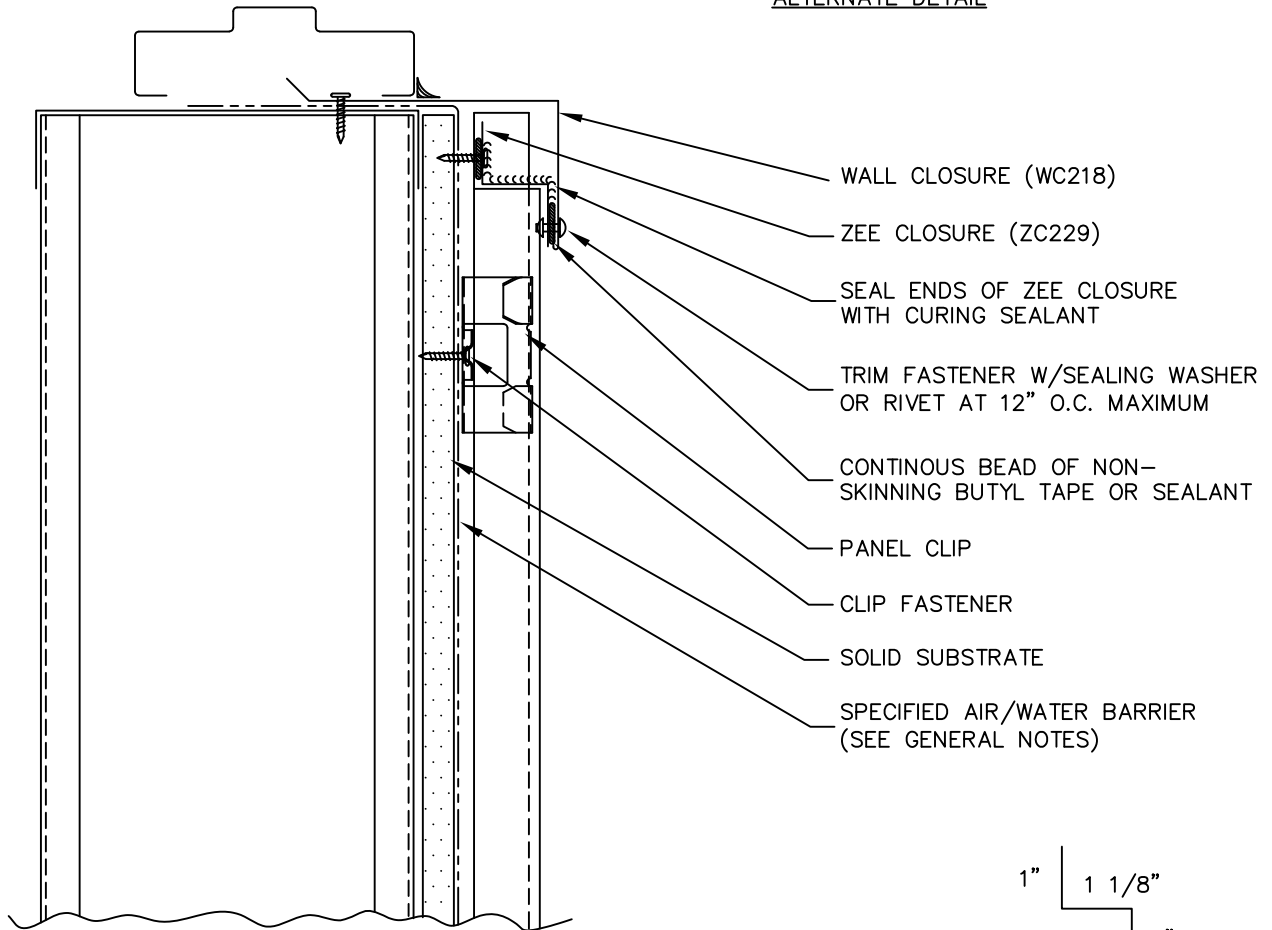


**DOOR / WINDOW**  
(JAMB)

SSMW-12



ALTERNATE DETAIL

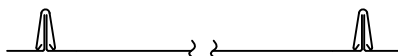


ZC229

NOTES:  
 - (V) = CUSTOM FLASHING. DIMS VARY BASED ON PROJECT CONDITIONS  
 - SEE DETAIL SSMW-18 FOR ZEE DETAIL



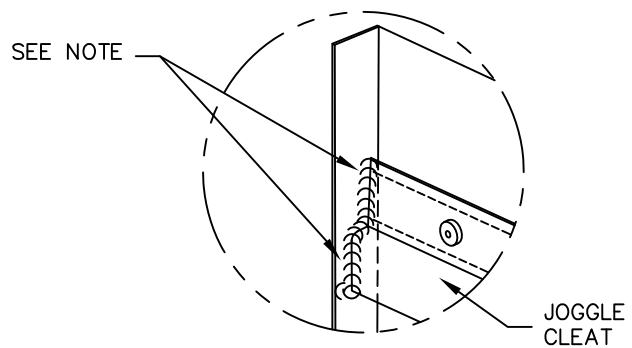
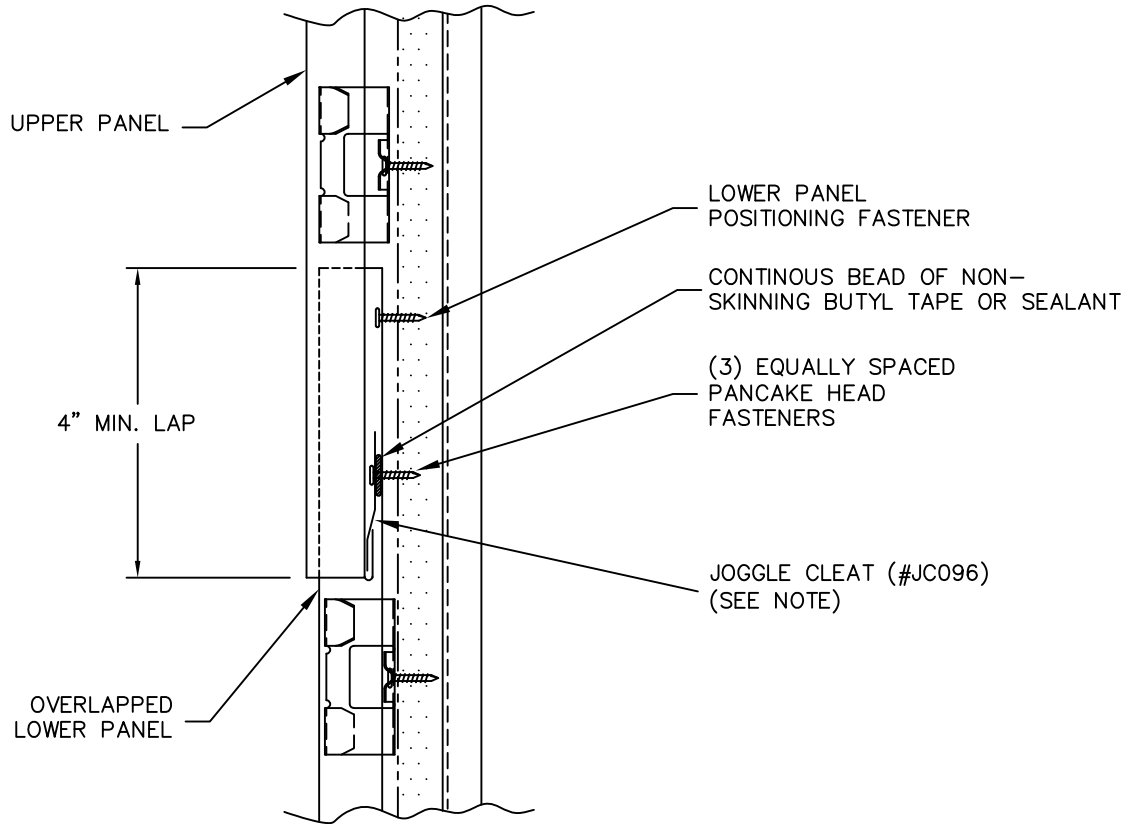
**SELECT SEAM**  
WALL



**DOOR / WINDOW**  
SILL

SSMW-13



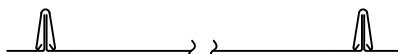


NOTE: EMBED JOGGLE CLEAT INTO BUTYL MASTIC ACROSS PANEL. ENCLOSE BOTH ENDS OF JOGGLE CLEAT IN MASTIC.

JOGGLE CLEAT DETAIL

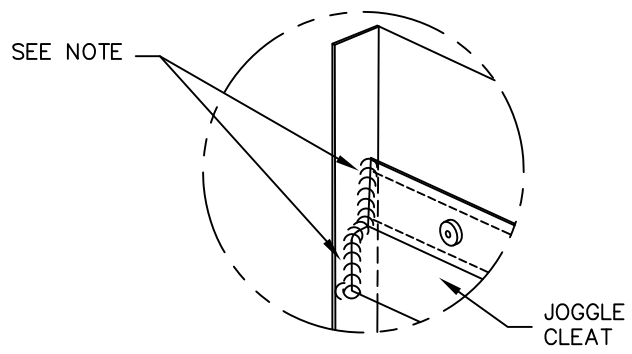
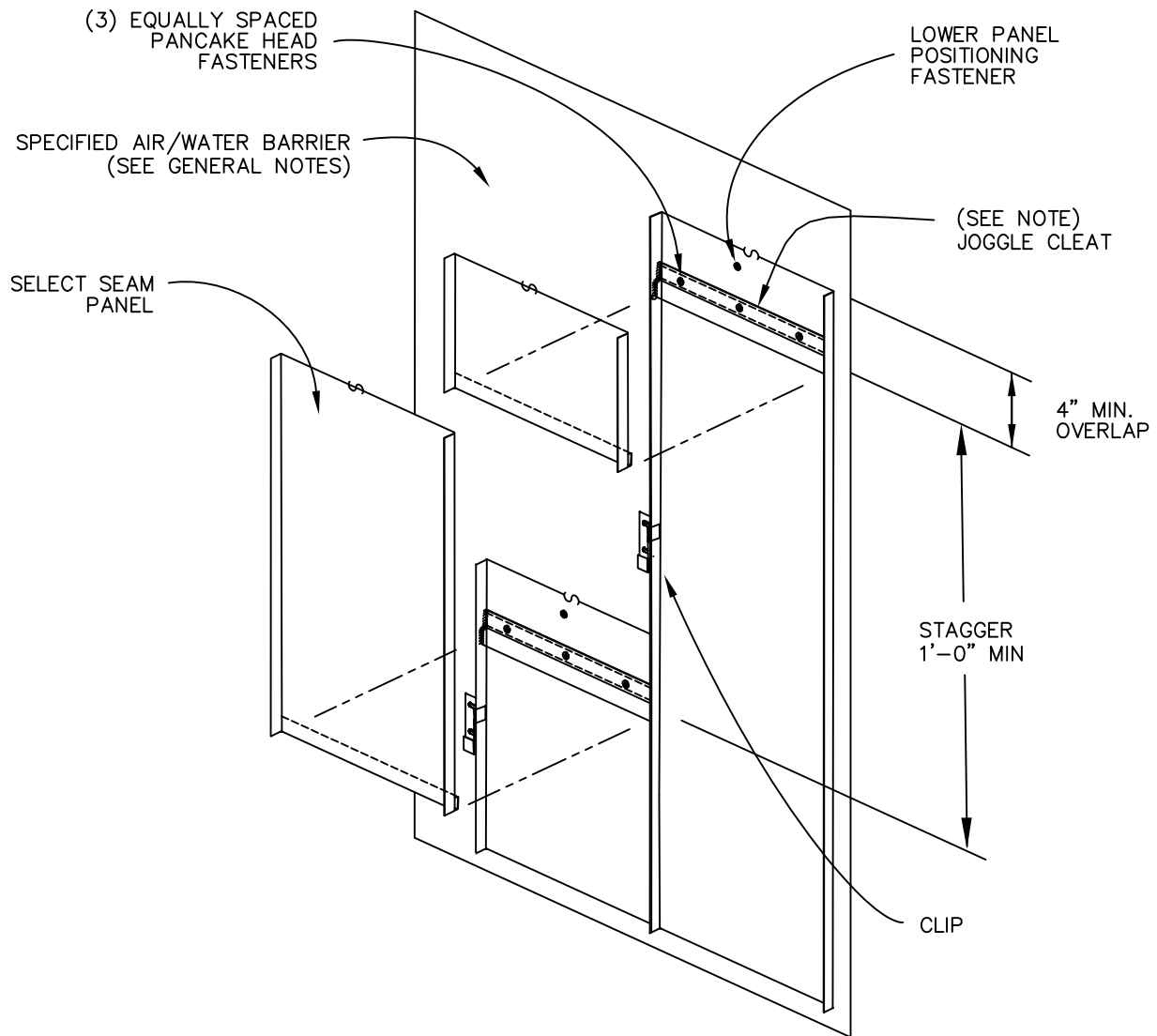


**SELECT SEAM WALL**



PANEL LAP

SSMW-14

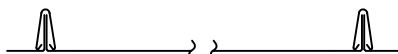


NOTE: EMBED JOGGLE CLEAT INTO BUTYL MASTIC ACROSS PANEL. ENCLOSE ENDS OF JOGGLE CLEAT IN MASTIC.

JOGGLE CLEAT DETAIL



**SELECT SEAM WALL**

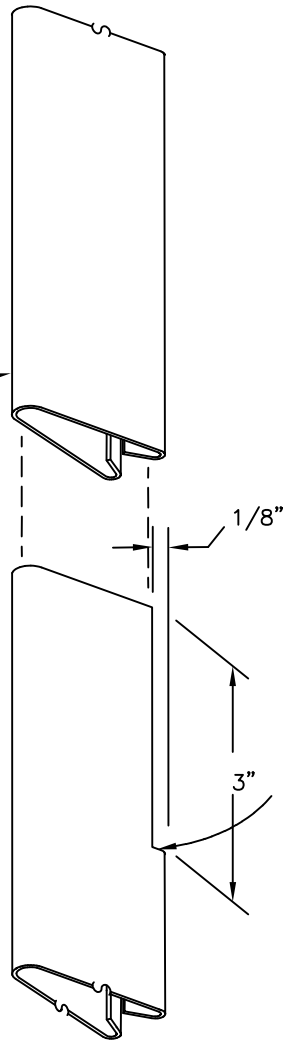


**PANEL LAP (3D)**

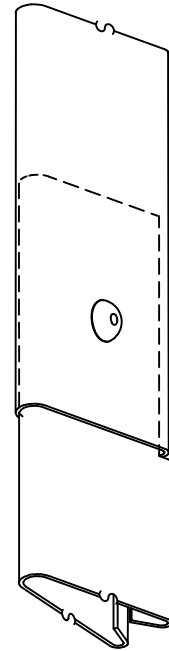
SSMW-15

SLIDE UPPER BATTEN OVER  
LOWER BATTEN 3"

POP RIVET TOGETHER AS  
NECESSARY.



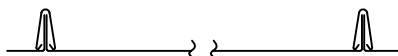
NOTCH BOTH BOTTOM HEMS  
OF LOWER BATTEN 3" LONG  
AND 1/8" WIDE



FINISHED LAP



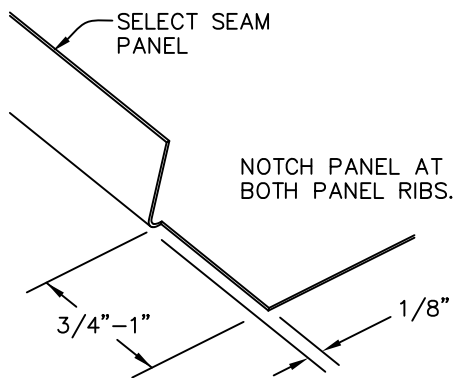
**SELECT SEAM  
WALL**



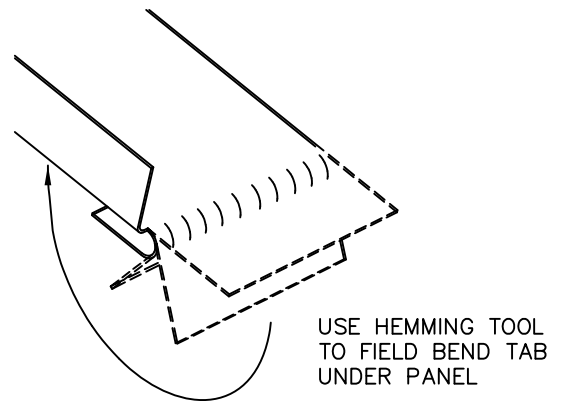
**BATTEN LAP**

**SSMW-16**

STEP  
1

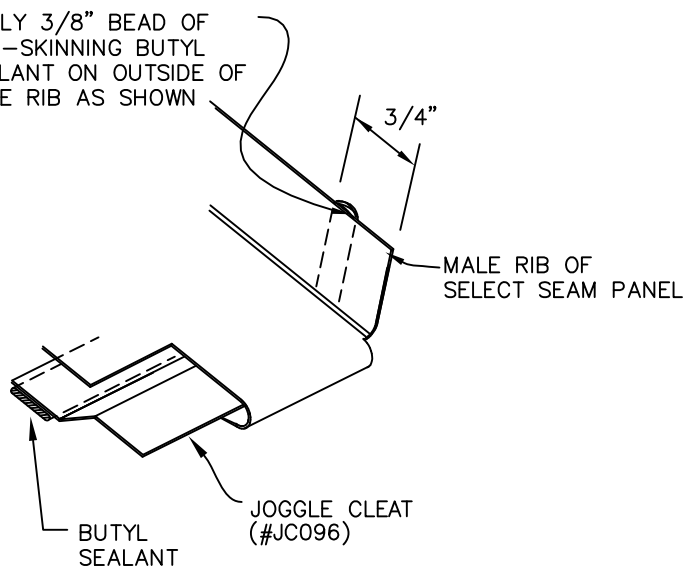


STEP  
2

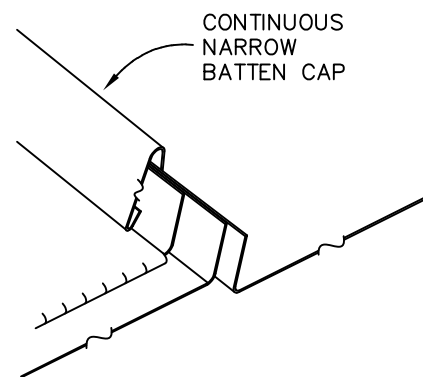


STEP  
3

APPLY 3/8" BEAD OF NON-SKINNING BUTYL SEALANT ON OUTSIDE OF MALE RIB AS SHOWN



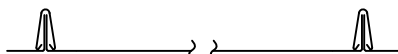
FINISHED LAP



NOTE: EMBED JOGGLE CLEAT INTO BUTYL MASTIC ACROSS PANEL. ENCLOSE BOTH ENDS OF JOGGLE CLEAT IN MASTIC.

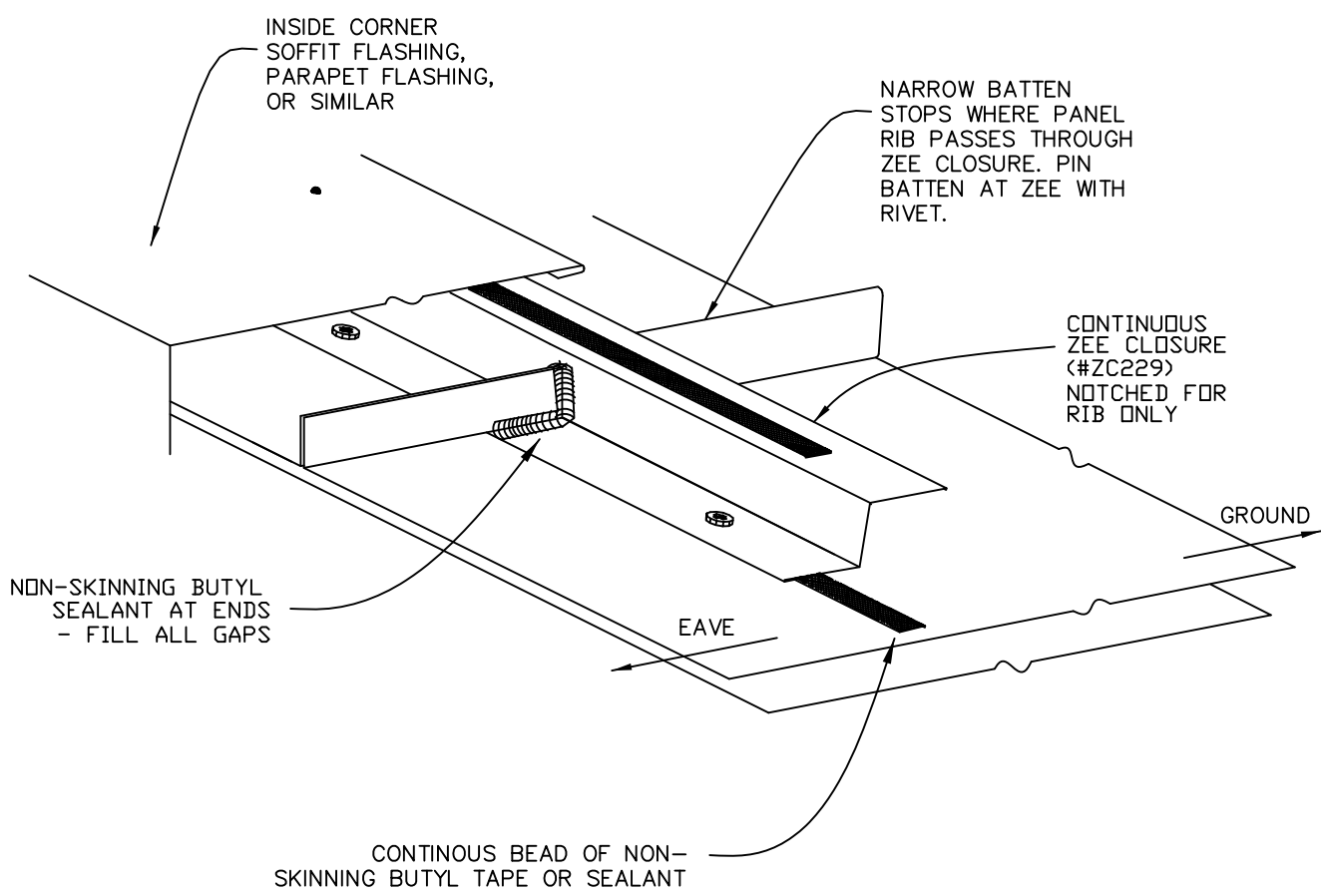


**SELECT SEAM WALL**

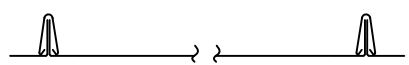


**HEM @ PANEL LAPS**

**SSMW-17**

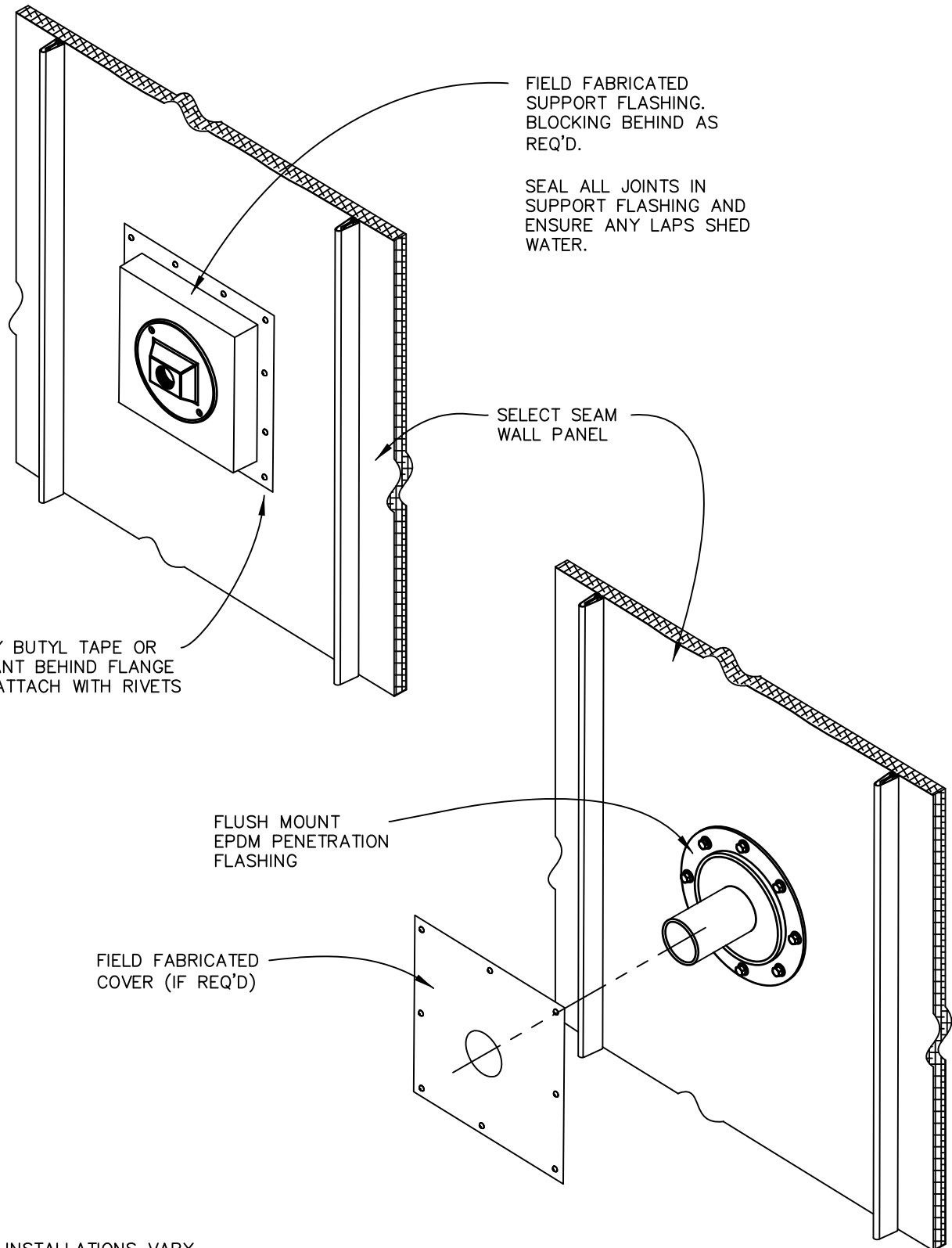


**SELECT SEAM WALL**



**ZEE CLOSURE DETAIL**

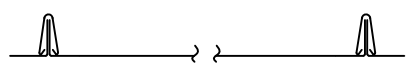
SSMW-18



NOTE: INSTALLATIONS VARY.  
THIS DETAIL FOR GUIDANCE ONLY.



**SELECT SEAM  
WALL**



**PENETRATIONS, SMALL**

SSMW-19

FIELD FABRICATE BOXED ENCLOSURE AROUND PENETRATION USING ZEE CLOSURES. UPPER ZEE INSTALLED AS DRIP EDGE

APPLY BUTYL MASTIC TAPE OR SEALANT WITHIN ALL PENETRATION COVER LAPS & JOINTS

SINGLE PIECE, OR DOUBLE PIECE (LAPPED UPPER/LOWER), FACE PLATE

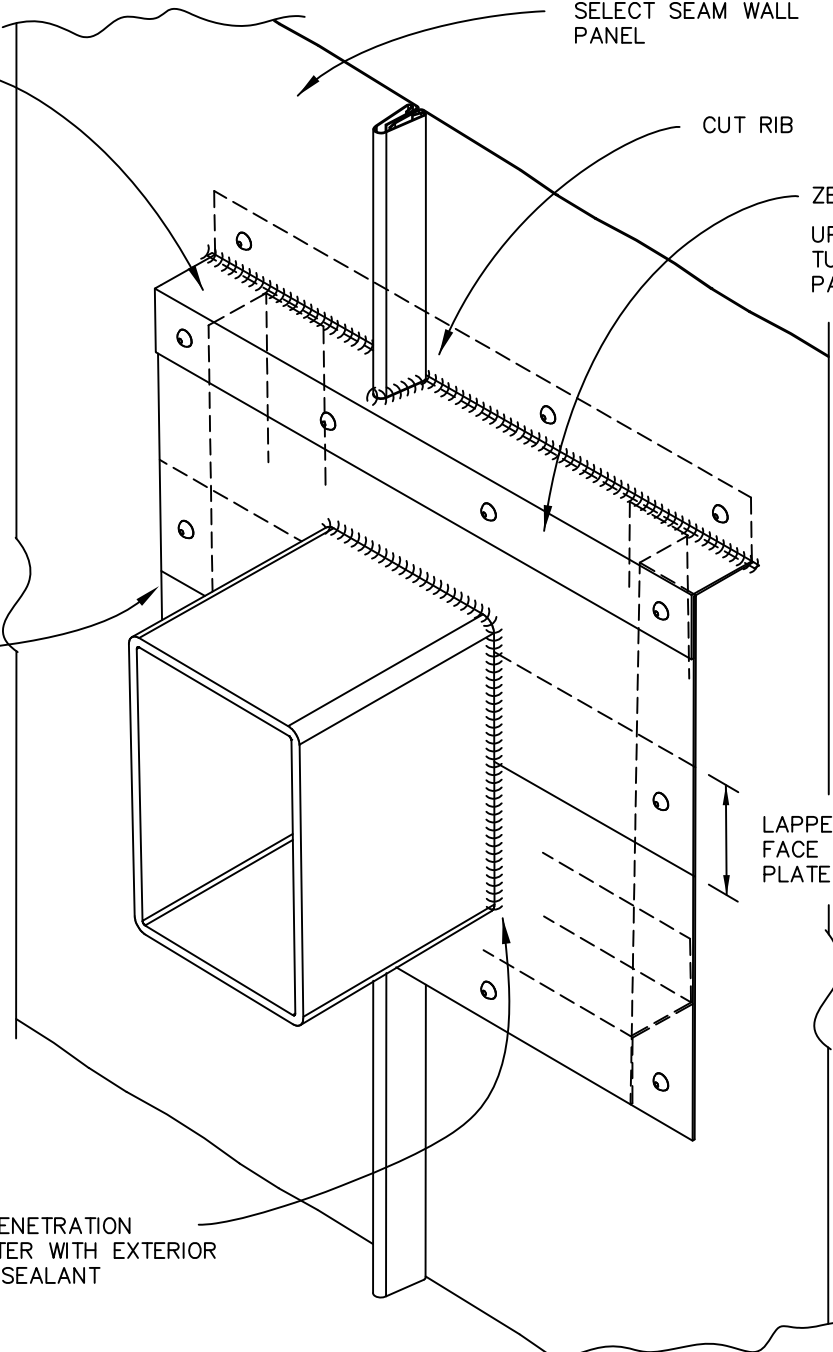
SEAL PENETRATION PERIMETER WITH EXTERIOR GRADE SEALANT

SELECT SEAM WALL PANEL

CUT RIB

ZEE DRIP EDGE UPPER FLANGE TUCKED BEHIND PANEL

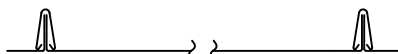
LAPPED FACE PLATE



NOTE: INSTALLATIONS VARY. THIS DETAIL FOR GUIDANCE ONLY.



SELECT SEAM WALL



PENETRATION, LARGE

SSMW-20

MANUFACTURING FACILITY:

**Sacramento, California**

2110 Enterprise Boulevard  
West Sacramento, CA 95691

**Tacoma, Washington**

2141 Milwaukee Way  
Tacoma, WA 98421

CUSTOMER SERVICE:

**800-733-4955**

Visit us at:

**[www.aepspan.com](http://www.aepspan.com)**

